

**TABLE 2 WASHINGTON BICYCLE COLLISIONS 1994-1996  
ALL ROADS**

COLLISION TYPE	#	%	INJ	FAT	5-		10-		16-		25-35-		>54 UNK
					<5	9	15	24	34	54			
<b>GROUP A: BICYCLE ENTERS/LEAVES ROADWAY @ MIDBLOCK LOCATION</b>													
TYPE 1-3: Driveway/Alley	747	15.3	719	7	8	114	207	161	129	92	16	20	
TYPE 4: Curb Shoulder	52	1.1	50	1	1	0	8	10	16	17	0	0	
<b>TOTAL GROUP A</b>	<b>799</b>	<b>16.3</b>	<b>769</b>	<b>8</b>	<b>9</b>	<b>114</b>	<b>215</b>	<b>171</b>	<b>145</b>	<b>109</b>	<b>16</b>	<b>20</b>	
<b>GROUP B: COLLISIONS @ INTERSECTION</b>													
TYPE 5b/6b: Bike Disregard Sign/Signal	353	7.2	336	3	2	70	141	53	41	29	6	11	
TYPE 7b: Bicycle Fails to Yield	314	6.4	306	3	8	61	112	53	36	34	3	7	
TYPE 8b: Bicycle Turning	167	3.4	159	1	2	25	70	31	18	14	4	3	
TYPE Bb: Bicycle Xing or Entering	267	5.5	255	1	13	64	121	30	12	16	1	10	
<b>SUBTOTAL GROUP B, Type 5b-Bb</b>	<b>1,101</b>	<b>22.5</b>	<b>1056</b>	<b>8</b>	<b>25</b>	<b>220</b>	<b>444</b>	<b>167</b>	<b>107</b>	<b>93</b>	<b>14</b>	<b>31</b>	
TYPE 5m: Motor Veh. Disregard Sign	20	0.4	20	0	0	1	7	3	5	3	1	0	
TYPE 6m: Motor Veh. Disregard Signal	31	0.6	31	0	0	1	5	6	9	9	0	1	
TYPE 7m: Motor Veh. Fails to Yield	850	17.4	842	2	11	39	205	230	172	145	20	28	
TYPE 8m: Motor Veh. Turning	23	0.5	22	0	0	2	5	4	6	5	1	0	
<b>SUBTOTAL GROUP B, Type 5m-8m</b>	<b>924</b>	<b>18.9</b>	<b>915</b>	<b>2</b>	<b>11</b>	<b>43</b>	<b>222</b>	<b>243</b>	<b>192</b>	<b>162</b>	<b>22</b>	<b>29</b>	
TYPE Bx: Inadequate Information	443	9.1	422	0	4	42	98	96	78	77	12	36	
<b>TOTAL GROUP B</b>	<b>2,468</b>	<b>50.4</b>	<b>2,393</b>	<b>10</b>	<b>40</b>	<b>305</b>	<b>764</b>	<b>506</b>	<b>377</b>	<b>332</b>	<b>48</b>	<b>96</b>	
<b>GROUP C: MOTOR VEHICLE ENTERS/LEAVES ROADWAY @ MIDBLOCK LOCATION</b>													
TYPE 11: Backing from Driveway	29	0.6	29	0	2	5	10	3	6	3	0	0	
<b>GROUP D: BICYCLE HIT FROM BEHIND BY MOTOR VEHICLE</b>													
TYPE 13a: M. Veh./Bike Going Straight	214	4.4	206	4	4	13	33	44	61	50	5	4	
TYPE 13/14/16/17: Motor Veh. Passing	22	0.4	22	0	0	0	1	6	6	8	0	1	
TYPE 15: M. Veh. Following Too Closely	7	0.1	7	0	0	0	2	4	0	1	0	0	
<b>TOTAL GROUP D</b>	<b>243</b>	<b>5.0</b>	<b>235</b>	<b>4</b>	<b>4</b>	<b>13</b>	<b>36</b>	<b>54</b>	<b>67</b>	<b>59</b>	<b>5</b>	<b>5</b>	
<b>GROUP E: BICYCLE TURNING/SWERVING NOT AT INTERSECTION</b>													
Bicycle Turning/Swerving	232	4.7	214	11	6	34	115	24	17	19	9	8	
<b>GROUP F: MOTOR VEHICLE TURNING, BICYCLE NOT</b>													
Motor Vehicle Turning, Bicycle Not	61	1.2	60	0	0	0	4	22	23	10	0	2	
<b>GROUP G: OTHER</b>													
TYPE 26: Bicycle Going Wrong Way	759	15.5	745	3	7	65	294	171	104	84	16	18	
TYPE 28: Motor Veh. Going Wrong Way	2	0.0	2	0	0	1	0	0	0	0	1	0	
TYPE 35: M. Veh. Driveout from Parking	21	0.4	21	0	0	0	0	7	8	4	1	1	
TYPE 36: Bike Strike Slow/Stop M. Veh.	245	5.0	225	2	1	24	90	43	34	33	3	17	
TYPE 38: Miscellaneous	33	0.7	30	1	1	6	0	6	4	5	8	3	
<b>TOTAL GROUP G</b>	<b>1060</b>	<b>21.7</b>	<b>1023</b>	<b>6</b>	<b>9</b>	<b>96</b>	<b>384</b>	<b>227</b>	<b>150</b>	<b>126</b>	<b>29</b>	<b>39</b>	
<b>TOTAL</b>	<b>4,892</b>	<b>100</b>	<b>4,723</b>	<b>39</b>	<b>70</b>	<b>567</b>	<b>1,528</b>	<b>1,007</b>	<b>785</b>	<b>658</b>	<b>107</b>	<b>170</b>	

**TABLE 4 WASHINGTON BICYCLE COLLISIONS 1994-1996  
STATE ROUTES**

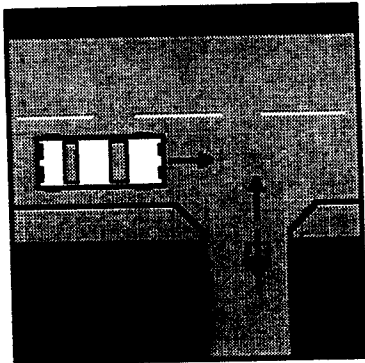
COLLISION TYPE	#	%	INJ	FAT	5-		10-		16-		25-		35- >54	UNK
					<5	9	15	24	34	54				
<b>GROUP A: BICYCLE ENTERS/LEAVES ROADWAY @ MIDBLOCK LOCATION</b>														
TYPE 1-3: Driveway/Alley	111	16.2	109	0	0	6	30	26	27	15	2	5		
TYPE 4: Curb Shoulder	15	2.2	14	1	0	0	3	1	6	5	0	0		
<b>TOTAL GROUP A</b>	<b>126</b>	<b>18.4</b>	<b>123</b>	<b>1</b>	<b>0</b>	<b>6</b>	<b>33</b>	<b>27</b>	<b>33</b>	<b>20</b>	<b>2</b>	<b>5</b>		
<b>GROUP B: COLLISIONS @ INTERSECTION</b>														
TYPE 5b/6b: Bike Disregard Sign/Signal	47	6.9	46	1	0	5	28	8	3	3	0	0		
TYPE 7b: Bicycle Fails to Yield	43	6.3	40	1	1	4	7	10	6	12	1	2		
TYPE 8b: Bicycle Turning	20	2.9	19	1	0	1	9	3	0	3	3	1		
TYPE Bb: Bicycle Xing or Entering	33	4.8	32	0	0	4	11	7	5	4	0	2		
<b>SUBTOTAL GROUP B, Type 5b-Bb</b>	<b>143</b>	<b>20.9</b>	<b>137</b>	<b>3</b>	<b>1</b>	<b>14</b>	<b>55</b>	<b>28</b>	<b>14</b>	<b>22</b>	<b>4</b>	<b>5</b>		
TYPE 5m: Motor Veh. Disregard Sign	4	0.6	4	0	0	0	2	0	1	1	0	0		
TYPE 6m: Motor Veh. Disregard Signal	4	0.6	4	0	0	0	1	2	1	0	0	0		
TYPE 7m: Motor Veh. Fails to Yield	117	17.1	115	0	0	5	44	29	20	16	2	1		
TYPE 8m: Motor Veh. Turning	5	0.7	4	0	0	0	1	1	3	0	0	0		
<b>SUBTOTAL GROUP B, Type 5m-8m</b>	<b>130</b>	<b>19.0</b>	<b>127</b>	<b>0</b>	<b>0</b>	<b>5</b>	<b>48</b>	<b>32</b>	<b>25</b>	<b>17</b>	<b>2</b>	<b>1</b>		
TYPE Bx: Inadequate Information	67	9.8	65	0	1	3	21	13	13	9	1	6		
<b>TOTAL GROUP B</b>	<b>340</b>	<b>49.6</b>	<b>329</b>	<b>3</b>	<b>2</b>	<b>22</b>	<b>124</b>	<b>73</b>	<b>52</b>	<b>48</b>	<b>7</b>	<b>12</b>		
<b>GROUP C: MOTOR VEHICLE ENTERS/LEAVES ROADWAY @ MIDBLOCK LOCATION</b>														
TYPE 11: Backing from Driveway	0	0.0	0	0	0	0	0	0	0	0	0	0		
<b>GROUP D: BICYCLE HIT FROM BEHIND BY MOTOR VEHICLE</b>														
TYPE 13a: M. Veh./Bike Going Straight	20	2.9	18	1	0	0	0	5	11	4	0	0		
TYPE 13/14/16/17: Motor Veh. Passing	1	0.1	1	0	0	0	0	0	0	0	0	1		
TYPE 15: M. Veh. Following Too Closely	0	0.0	0	0	0	0	0	0	0	0	0	0		
<b>TOTAL GROUP D</b>	<b>21</b>	<b>3.1</b>	<b>19</b>	<b>1</b>	<b>0</b>	<b>0</b>	<b>0</b>	<b>5</b>	<b>11</b>	<b>4</b>	<b>0</b>	<b>1</b>		
<b>GROUP E: BICYCLE TURNING/SWERVING NOT AT INTERSECTION</b>														
Bicycle Turning/Swerving	32	4.7	27	4	0	2	15	3	4	6	2	0		
<b>GROUP F: MOTOR VEHICLE TURNING, BICYCLE NOT</b>														
Motor Vehicle Turning, Bicycle Not	4	0.6	4	0	0	0	0	2	1	1	0	0		
<b>GROUP G: OTHER</b>														
TYPE 26: Bicycle Going Wrong Way	135	19.7	134	0	1	3	47	30	23	23	5	3		
TYPE 28: Motor Veh. Going Wrong Way	0	0.0	0	0	0	0	0	0	0	0	0	0		
TYPE 35: M. Veh. Driveout from Parking	1	0.1	1	0	0	0	0	0	1	0	0	0		
TYPE 36: Bike Strike Slow/Stop M. Veh.	25	3.6	22	1	0	3	9	10	1	2	0	0		
TYPE 38: Miscellaneous	1	0.1	1	0	0	0	0	0	0	1	0	0		
<b>TOTAL GROUP G</b>	<b>162</b>	<b>23.6</b>	<b>158</b>	<b>1</b>	<b>1</b>	<b>6</b>	<b>56</b>	<b>40</b>	<b>25</b>	<b>26</b>	<b>5</b>	<b>3</b>		
<b>TOTAL</b>	<b>685</b>	<b>100</b>	<b>660</b>	<b>10</b>	<b>3</b>	<b>36</b>	<b>228</b>	<b>150</b>	<b>126</b>	<b>105</b>	<b>16</b>	<b>21</b>		

**TABLE 6 WASHINGTON BICYCLE COLLISIONS 1994-1996  
CITY STREETS**

COLLISION TYPE	#	%	INJ	FAT	5-	10-	16-	25-	35-	UNK		
					<5	9	15	24	34		54	>54
<b>GROUP A: BICYCLE ENTERS/LEAVES ROADWAY @ MIDBLOCK LOCATION</b>												
TYPE 1-3: Driveway/Alley	513	15.5	494	2	6	75	128	121	92	66	11	14
TYPE 4: Curb Shoulder	19	0.6	18	0	1	0	1	5	6	6	0	0
<b>TOTAL GROUP A</b>	<b>532</b>	<b>16.1</b>	<b>512</b>	<b>2</b>	<b>7</b>	<b>75</b>	<b>129</b>	<b>126</b>	<b>98</b>	<b>72</b>	<b>11</b>	<b>14</b>
<b>GROUP B: COLLISIONS @ INTERSECTION</b>												
TYPE 5b/6b: Bike Disregard Sign/Signal	233	7.0	221	0	0	46	80	37	35	19	5	11
TYPE 7b: Bicycle Fails to Yield	217	6.6	213	1	5	41	81	38	26	20	2	4
TYPE 8b: Bicycle Turning	92	2.8	87	0	1	12	32	20	16	9	1	1
TYPE Bb: Bicycle Xing or Entering	171	5.2	161	1	7	51	73	18	7	9	0	6
<b>SUBTOTAL GROUP B, Type 5b-Bb</b>	<b>713</b>	<b>21.6</b>	<b>682</b>	<b>2</b>	<b>13</b>	<b>150</b>	<b>266</b>	<b>113</b>	<b>84</b>	<b>57</b>	<b>8</b>	<b>22</b>
TYPE 5m: Motor Veh. Disregard Sign	14	0.4	14	0	0	1	4	3	4	2	0	0
TYPE 6m: Motor Veh. Disregard Signal	26	0.8	26	0	0	1	4	4	8	8	0	1
TYPE 7m: Motor Veh. Fails to Yield	651	19.7	647	0	11	29	139	185	136	111	15	25
TYPE 8m: Motor Veh. Turning	15	0.5	15	0	0	1	3	3	3	4	1	0
<b>SUBTOTAL GROUP B, Type 5m-8m</b>	<b>706</b>	<b>21.3</b>	<b>702</b>	<b>0</b>	<b>11</b>	<b>32</b>	<b>150</b>	<b>195</b>	<b>151</b>	<b>125</b>	<b>16</b>	<b>26</b>
TYPE Bx: Inadequate Information	310	9.4	294	0	2	27	62	73	56	56	8	26
<b>TOTAL GROUP B</b>	<b>1,729</b>	<b>52.3</b>	<b>1,678</b>	<b>2</b>	<b>26</b>	<b>209</b>	<b>478</b>	<b>381</b>	<b>291</b>	<b>238</b>	<b>32</b>	<b>74</b>
<b>GROUP C: MOTOR VEHICLE ENTERS/LEAVES ROADWAY @ MIDBLOCK LOCATION</b>												
TYPE 11: Backing from Driveway	25	0.8	25	0	1	4	9	3	5	3	0	0
<b>GROUP D: BICYCLE HIT FROM BEHIND BY MOTOR VEHICLE</b>												
TYPE 13a: M. Veh./Bike Going Straight	146	4.4	142	1	4	10	23	26	45	31	3	4
TYPE 13/14/16/17: Motor Veh. Passing	13	0.4	13	0	0	0	0	5	5	3	0	0
TYPE 15: M. Veh. Following Too Closely	5	0.2	5	0	0	0	1	3	0	1	0	0
<b>TOTAL GROUP D</b>	<b>164</b>	<b>5.0</b>	<b>160</b>	<b>1</b>	<b>4</b>	<b>10</b>	<b>24</b>	<b>34</b>	<b>50</b>	<b>35</b>	<b>3</b>	<b>4</b>
<b>GROUP E: BICYCLE TURNING/SWERVING NOT AT INTERSECTION</b>												
Bicycle Turning/Swerving	117	3.5	113	0	5	23	45	14	10	12	3	5
<b>GROUP F: MOTOR VEHICLE TURNING, BICYCLE NOT</b>												
Motor Vehicle Turning, Bicycle Not	52	1.6	51	0	0	0	2	19	21	8	0	2
<b>GROUP G: OTHER</b>												
TYPE 26: Bicycle Going Wrong Way	467	14.1	457	1	5	42	161	122	64	53	7	13
TYPE 28: Motor Veh. Going Wrong Way	2	0.1	2	0	0	1	0	0	0	0	1	0
TYPE 35: M. Veh. Driveout from Parking	17	0.5	17	0	0	0	0	7	7	2	0	1
TYPE 36: Bike Strike Slow/Stop M. Veh.	175	5.3	162	0	1	14	65	28	28	22	3	14
TYPE 38: Miscellaneous	27	0.8	24	1	1	4	4	3	5	7	0	3
<b>TOTAL GROUP G</b>	<b>688</b>	<b>20.8</b>	<b>662</b>	<b>2</b>	<b>7</b>	<b>61</b>	<b>230</b>	<b>160</b>	<b>104</b>	<b>84</b>	<b>11</b>	<b>31</b>
<b>TOTAL</b>	<b>3,307</b>	<b>100</b>	<b>3,201</b>	<b>7</b>	<b>50</b>	<b>382</b>	<b>917</b>	<b>737</b>	<b>579</b>	<b>452</b>	<b>60</b>	<b>130</b>

# Modified Cross-Fisher Classification of Bicycle/Motor Vehicle Collisions Used by the Washington State Department of Transportation

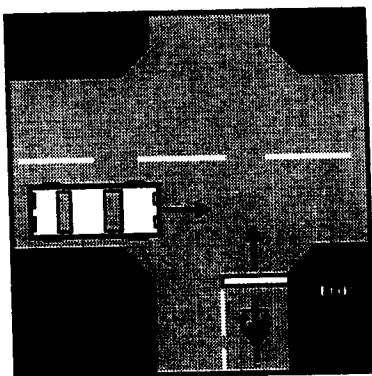
**Class A: *Bicycle ride-out from driveway, alley and other midblock locations.***



Type 1 - 3: Rideout from driveway or alley

**Class A**

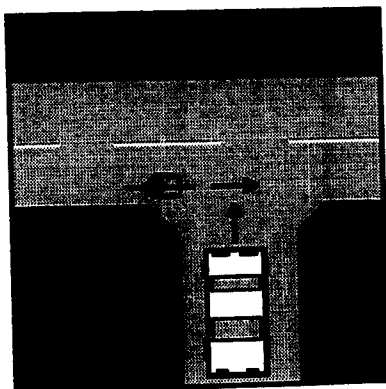
**Class B: *Collisions at controlled intersection***



Type 5b/6b: Bicyclist disregards sign or signal  
Type 7b: Bicyclist fails to yield  
Type 8b: Bicyclist turning  
Type Bb: Bicyclist crossing or entering  
Type 5m: Motorist disregards sign  
Type 6m: Motorist disregards signal  
Type 7m: Motorist fails to yield  
Type 8m: Motorist turning  
Type Bx: Inadequate information

**Class B**

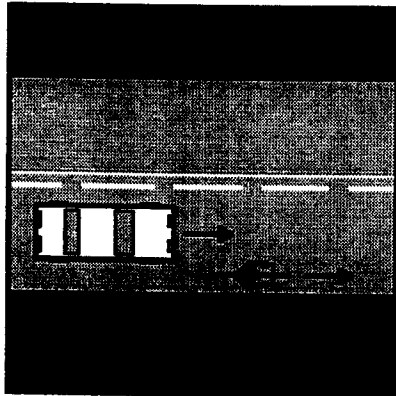
**Class C: *Collisions at Driveways and Alleys***



Class C: Backing from driveway

**Class C**

**Class D: *Motorist overtaking***



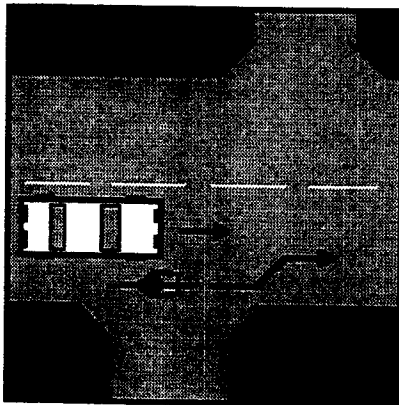
Type 13a: Motorist/cyclist going straight

Type 14/16/17: Motorist passing cyclist

Type 15: Motorist following too closely

**Class D**

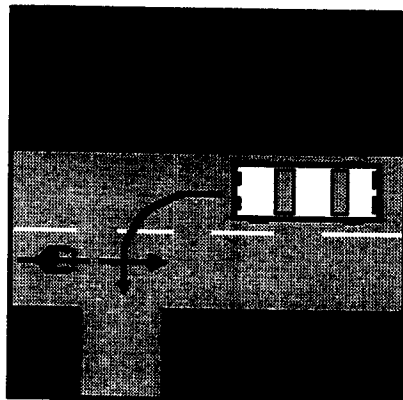
**Class E: *Bicyclist unexpected turn/swerve***



Class E: Bicyclist turning or swerving

**Class E**

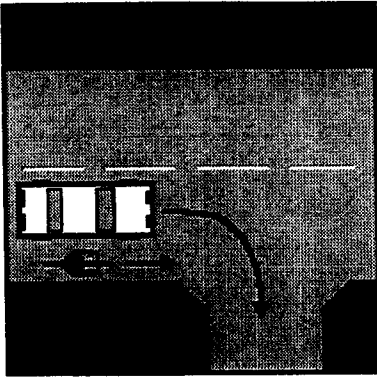
**Class F: *Motorist turning, cyclist not at intersection***



Class F: Motorist turning, cyclist not at intersection

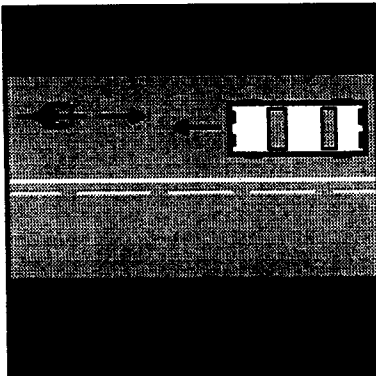
**Class F**

**Class F: *Motorist unexpected turn (continued)***



**Class F**

**Class G: *Other***



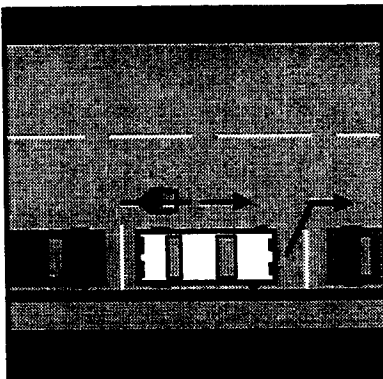
Type 26: Vehicle collide head-on, wrong way bicyclist

Type 35: Motorist drive out from on-street parking

Type 36: Cyclist strikes slowed or stopped vehicle.

Type 38b: Miscellaneous

**Class G-26**



**Class G-35**