

Homework #1

Design Implications for Human-Machine Systems

Instructor : Richard Seseek, Ph.D., MPH,CSP

*GOOD AND BAD
DESIGNS*

BY

LEENA KORA

52'' Ceiling Fan

- Though it is a very fancy ceiling fan with light, it is not a good design because of the following factors
- **Lack of visibility:** There are two pull chains. It is not clear which one is for fan and for bulbs.
- In the manual, they have not specified about how to put on and put off the bulbs.
- **Lack of mapping:** The speed control is done by pulling the chain. 1 pull-High, 2 pulls-Medium, 3 pulls-Low and 4 pulls- off



Implications of the Design

- It is not economical as it has 4 incandescent bulbs.
- Even if one bulb of the four bulbs does not work, it does not look good and it affects the uniformity of lighting in the place where it is used.
- The switch for bulbs is not provided. They have to be operated through the pull chain, so it is not convenient for kids.
- If suppose fan is at its medium speed. One has to think, remember and practically check whether it requires 2 pulls or 3 pulls to put it off, when they want the light bulbs to be on.

Possible Improvements

- Fan and bulb symbols on the pull chain can be provided.
- Labels as 'Fan' and 'Light' can be provided on the pull chains.
- Regulator can be provided for the fan near its switch.
- A switch for fan can be provided that has *three* levels-up for on, down for off and medium for slower speed.

Wrist Watch

- It looks like a normal and proper working wrist watch but it has many flaws.
- Lack of visibility: when the side button is pulled, it does not come out long. So one keeps on pulling it out.
- When the side button is pulled out, it can be rotated only in clockwise direction. No indication is provided to show it.



- If we try to rotate it in anticlockwise direction, the button comes out from the watch.

Possible Implications

- **It takes long time to set the time.**
- **It may result in system loss if it is rotated in anti clockwise direction.**

Improvements

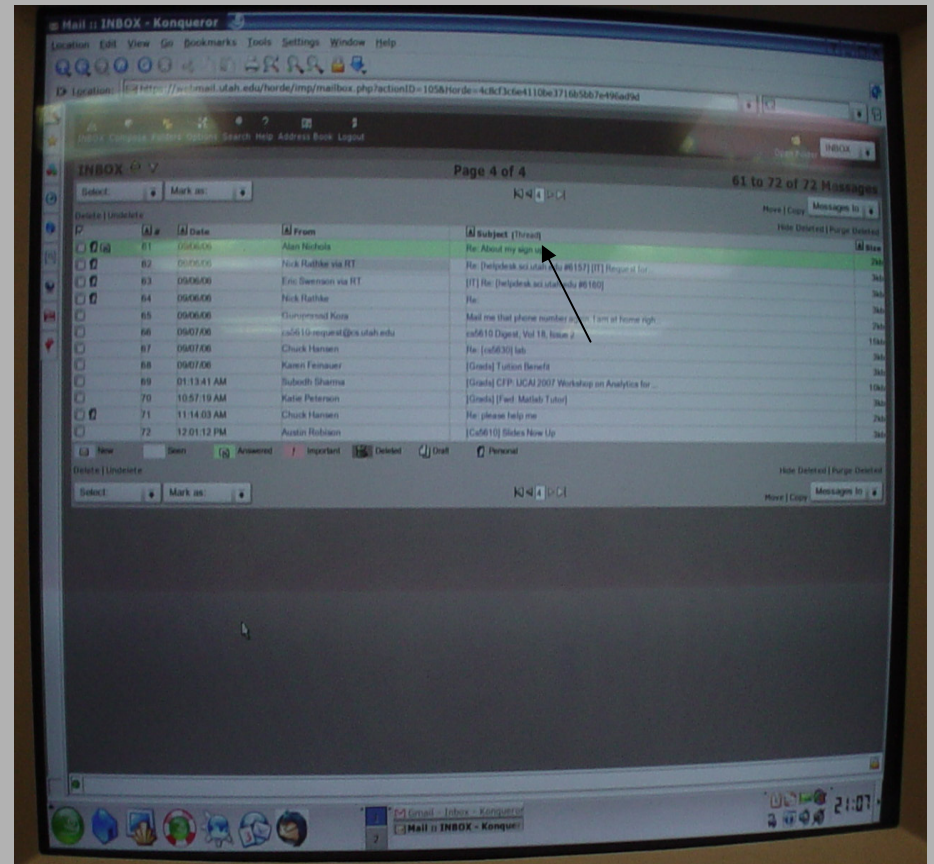
- Show an arrow in the clockwise direction near the button to indicate that it has to be rotated in the clockwise direction.
- It has to be made flexible by allowing the user to rotate it in both the direction.
- Provide proper length to the button from inside to indicate the user that it has come out and ready to be rotated.

Reverse Policy



Horde Webmail software

- This software does not save sent items automatically.
- One has to do some setting for each mail they send to save it in the Sent items Box.
- This software does not store the deleted mails in the trash automatically.



- Non intuitive and non user friendly environment

Implications

- If one deletes an important mail by mistake, then that important mail could not be regained.
- One can't check their mails for confirmation of some information in their sent mails.

Improvements

- *provide an option for setting up for automatic storage of sent items in sent box under settings menu.*
- *It can ask users regarding the sent box setup during sign up.*
- *It should automatically store the deleted items in the trash.*

Lets have a look at a good design



Water Taps

- Checkout this good and well designed water tap.
- It provides color indication to indicate the type of water.
- Along with the color indication it provides labels to guide the users.



Similar Systems

- Have a look at some similar systems.
- Don't have to remember the conventions or blind indications unlike that in case of these taps shown here.



**ANY
QUESTIONS**