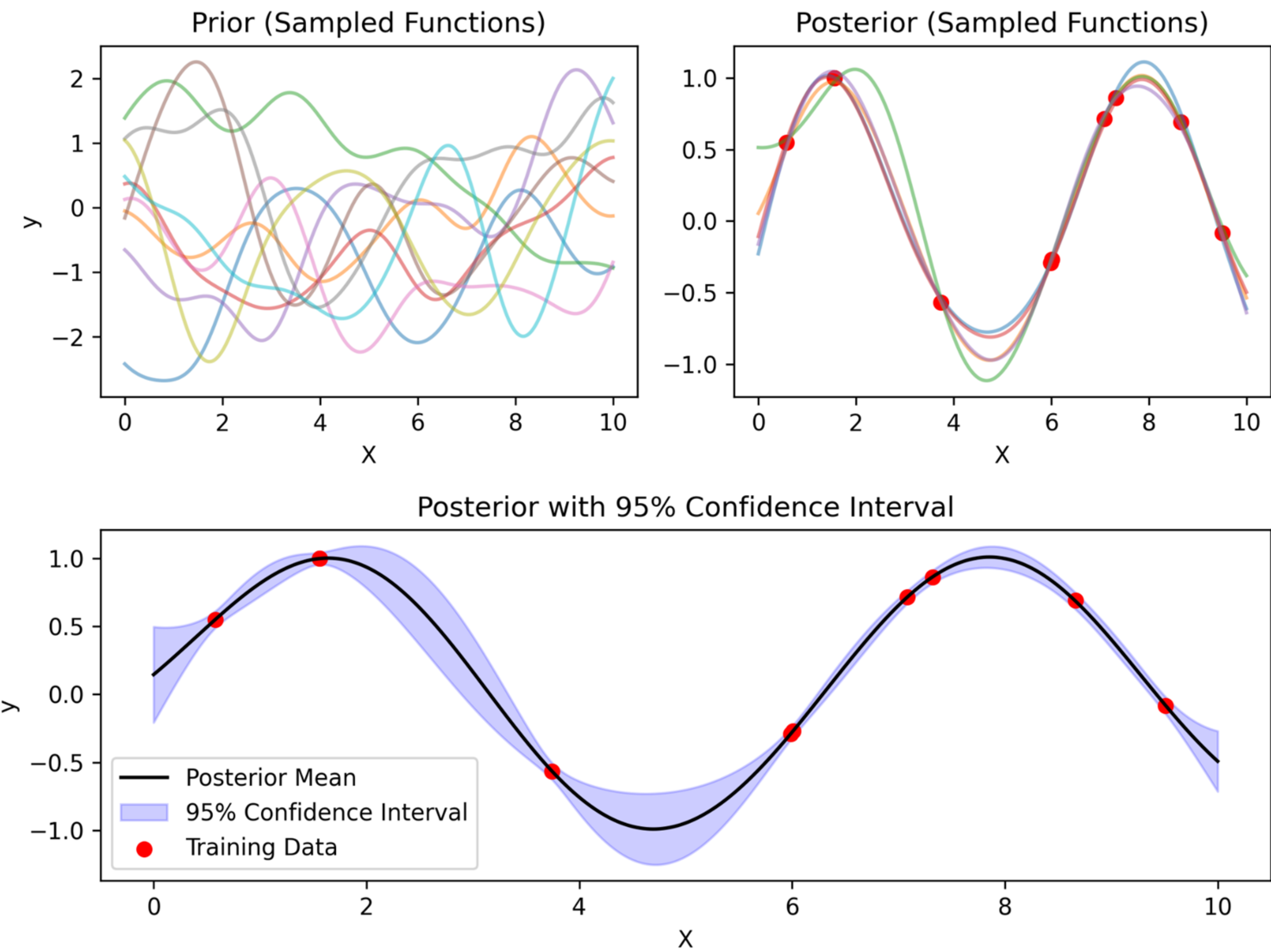


# Connecting Foundational AI with Engineering

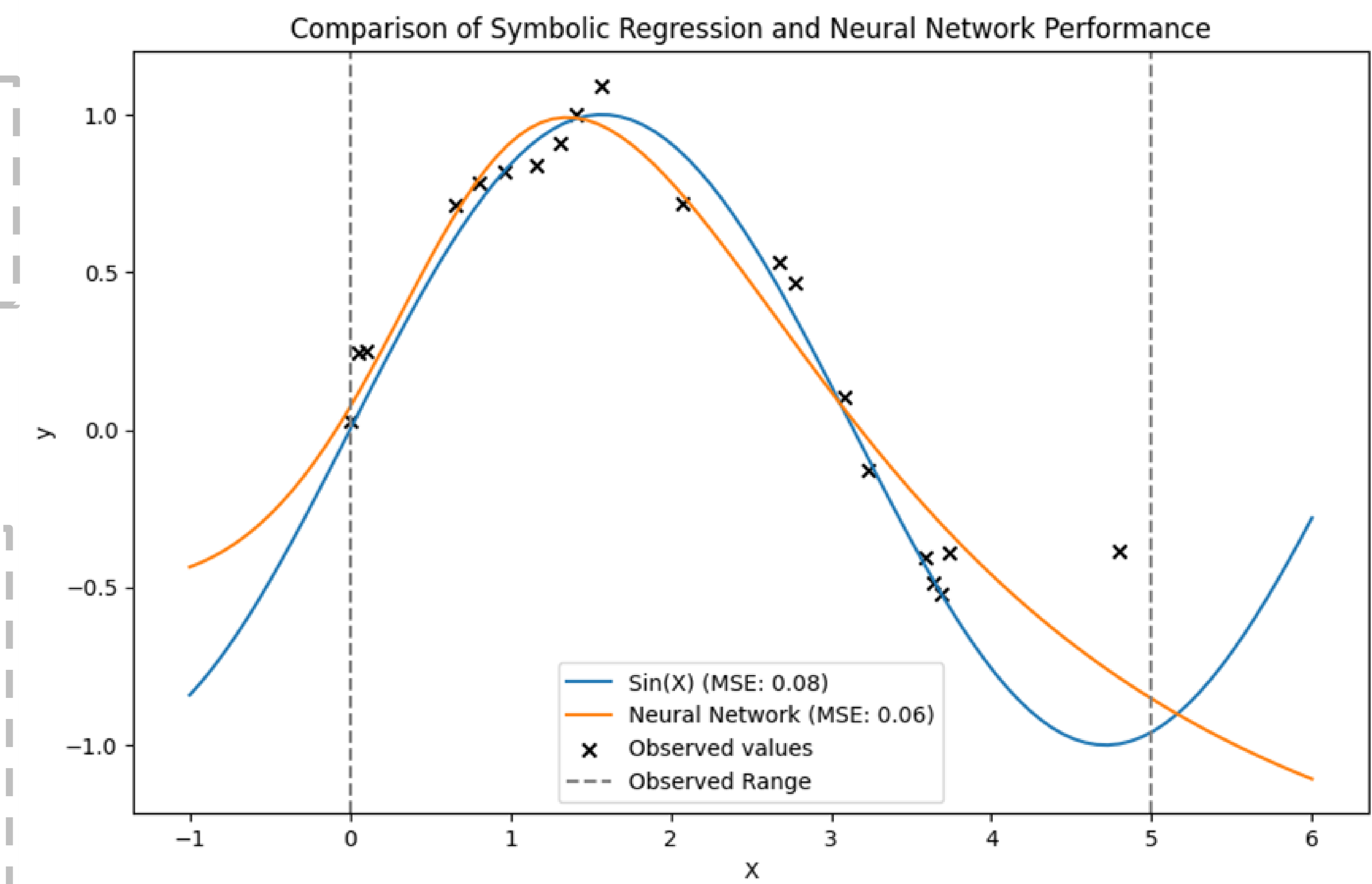
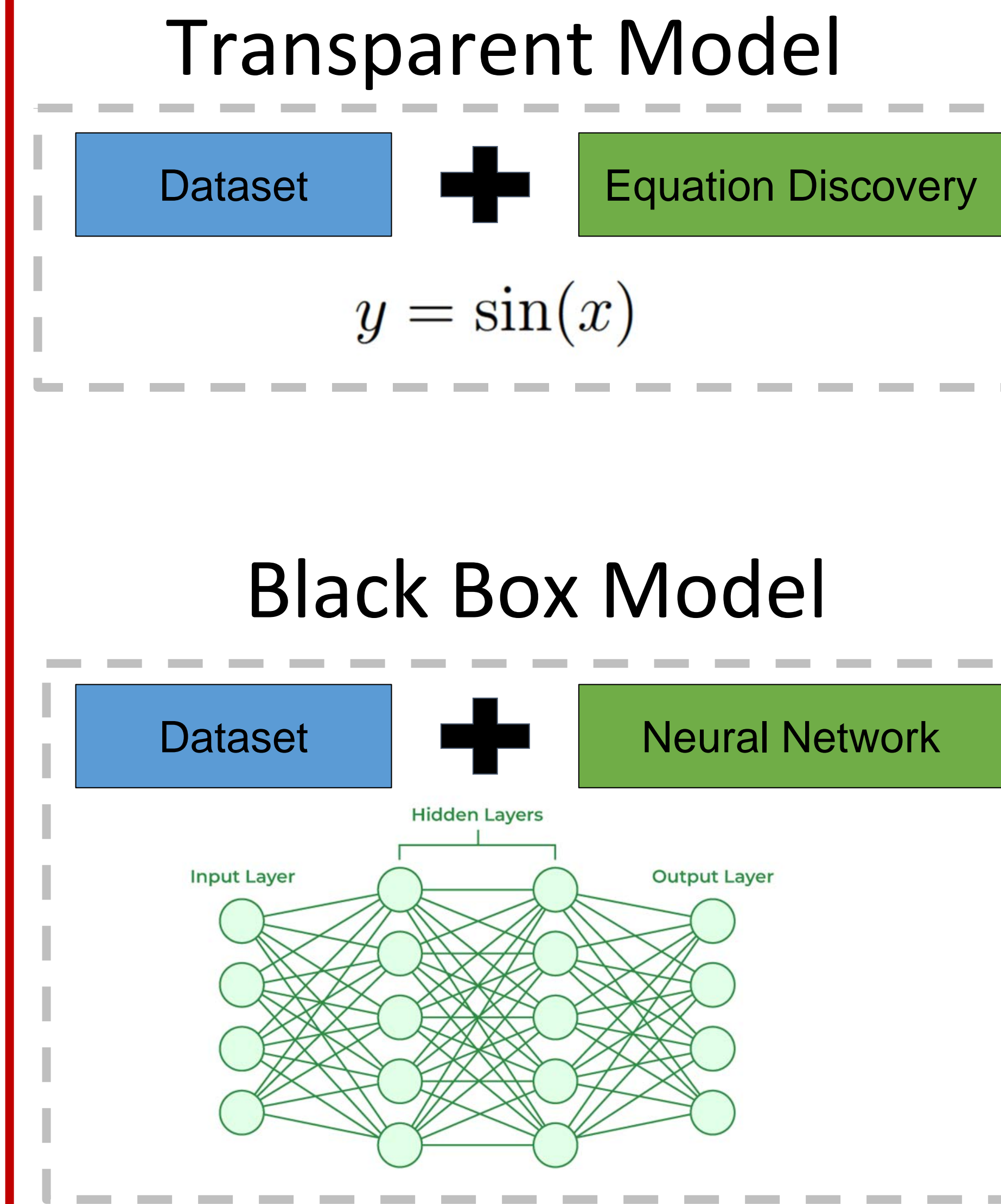
AI<sup>2</sup>: Artificial Intelligence, Adaptation, and Innovation Group



## Uncertainty Quantification in Machine Learning

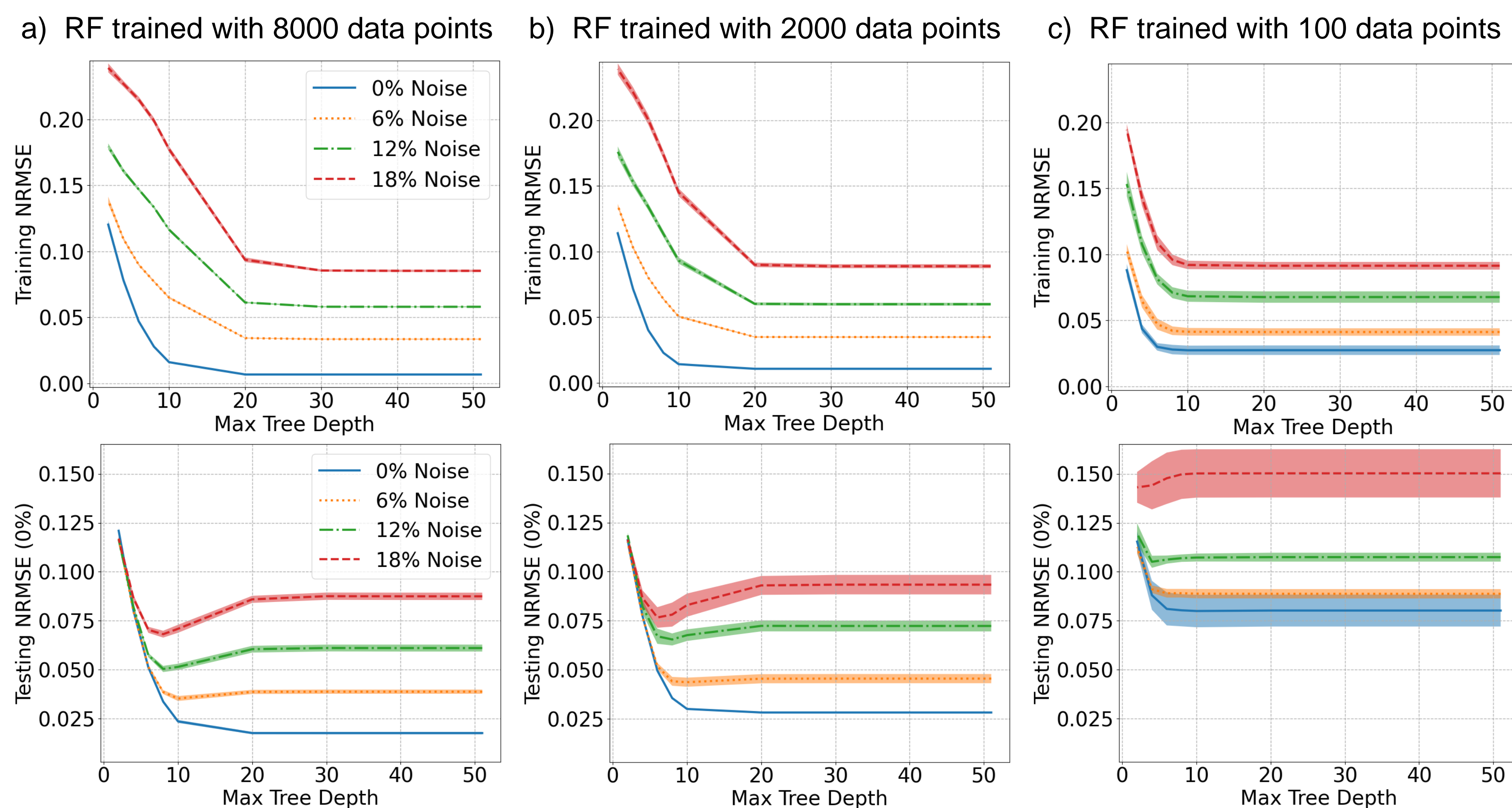
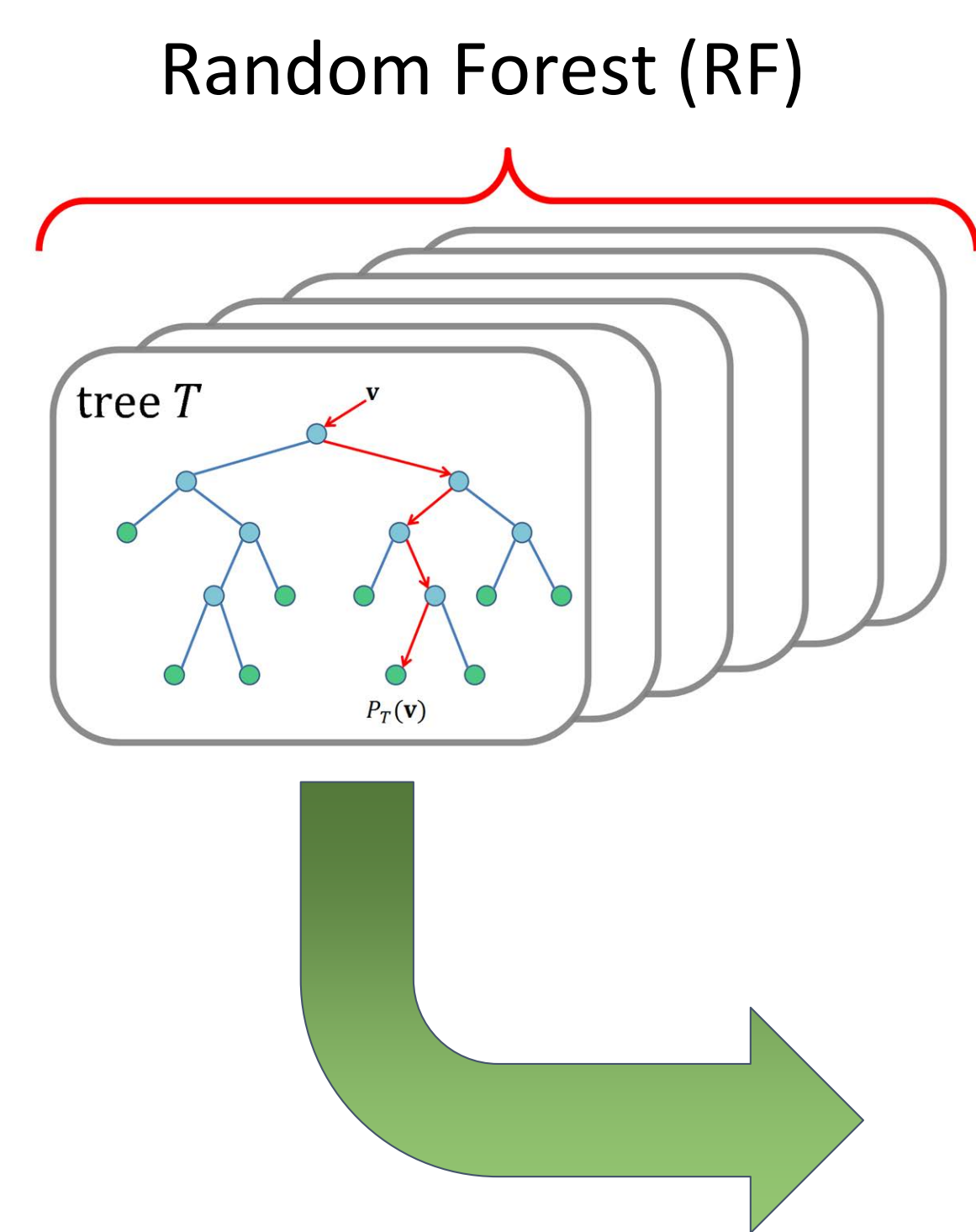


## Building More Interpretable Machine Learning Models



## Analysis of Predictive Models to Improve Engineering Applications

### Impact of dataset size on model performance



### Impact of test set noise on model prediction accuracy

