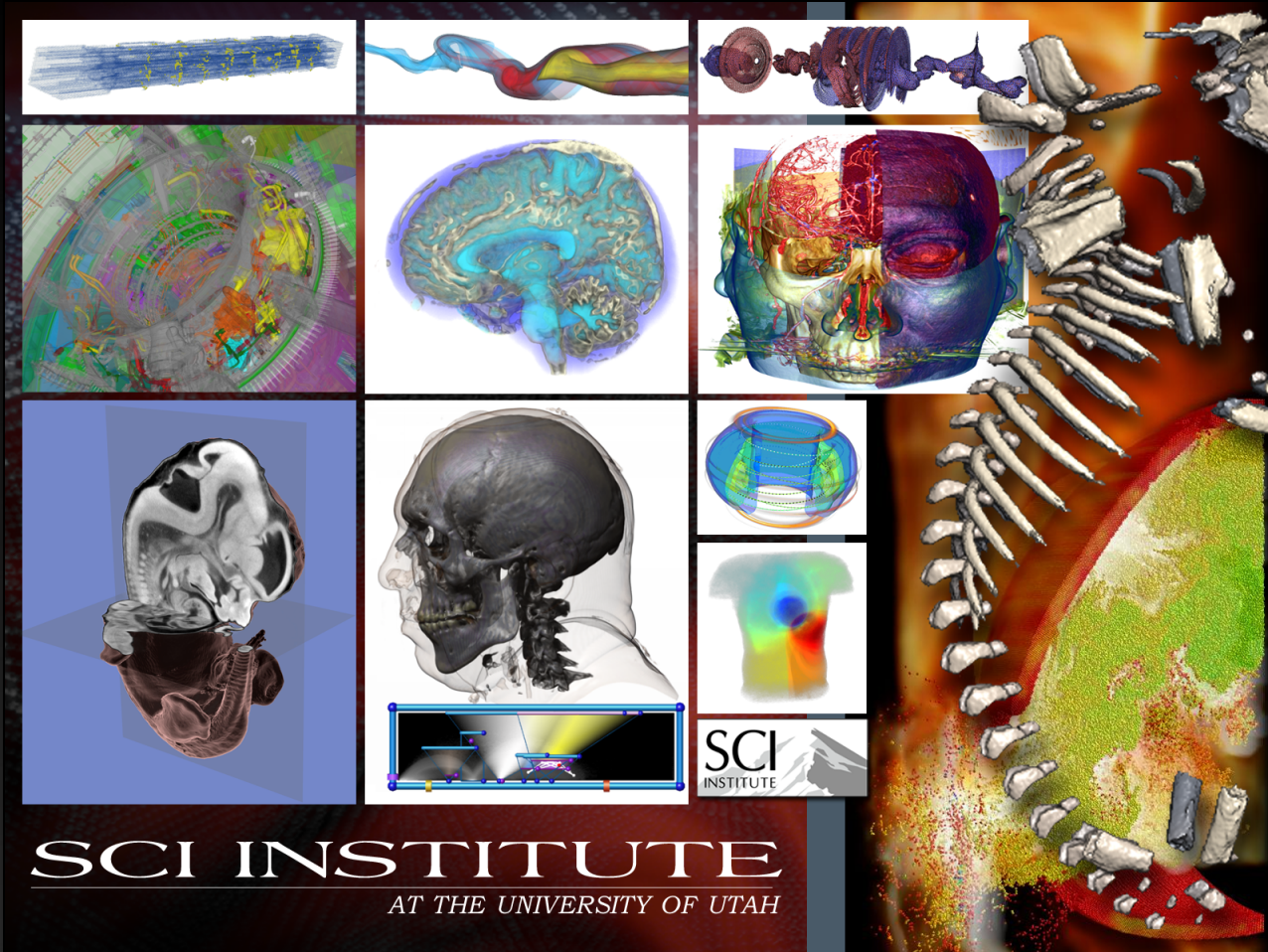


# CIBC Workshop 2009



SCI INSTITUTE  
AT THE UNIVERSITY OF UTAH

## SCIRun Part 2: Fields and Vis

# Fields: Mesh + Data

Geometry

Regular

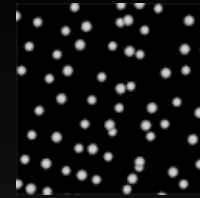
Irregular

Data

int, float, double, ...

Vector, Tensor, ...

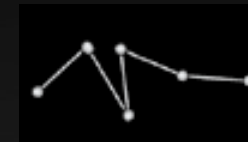
Data\_at (center)



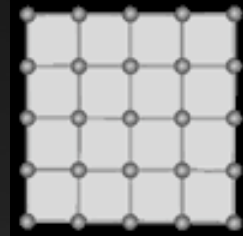
PointCloudField



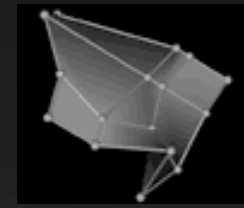
ScanlineField



CurveField



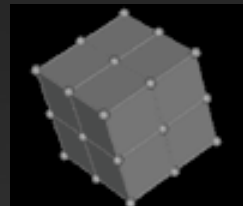
ImageField



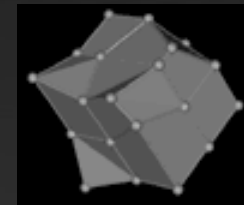
QuadSurfField



TriSurfField



LatVolField

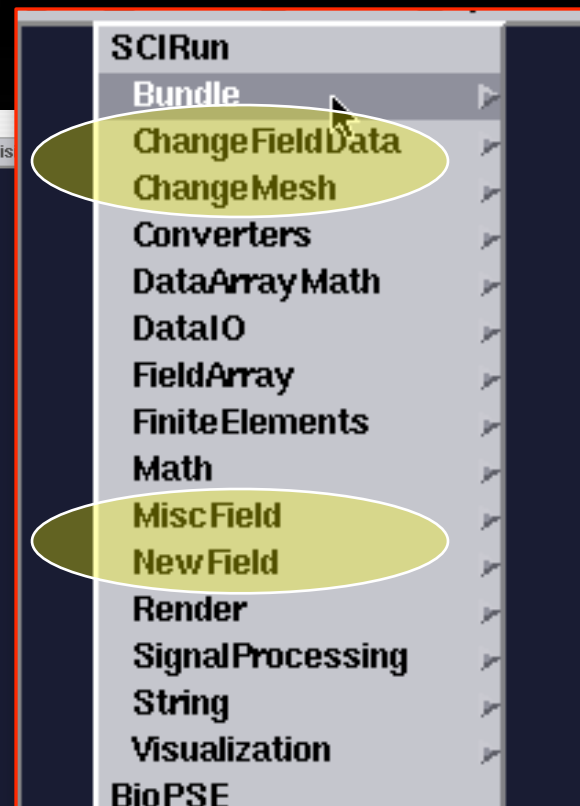
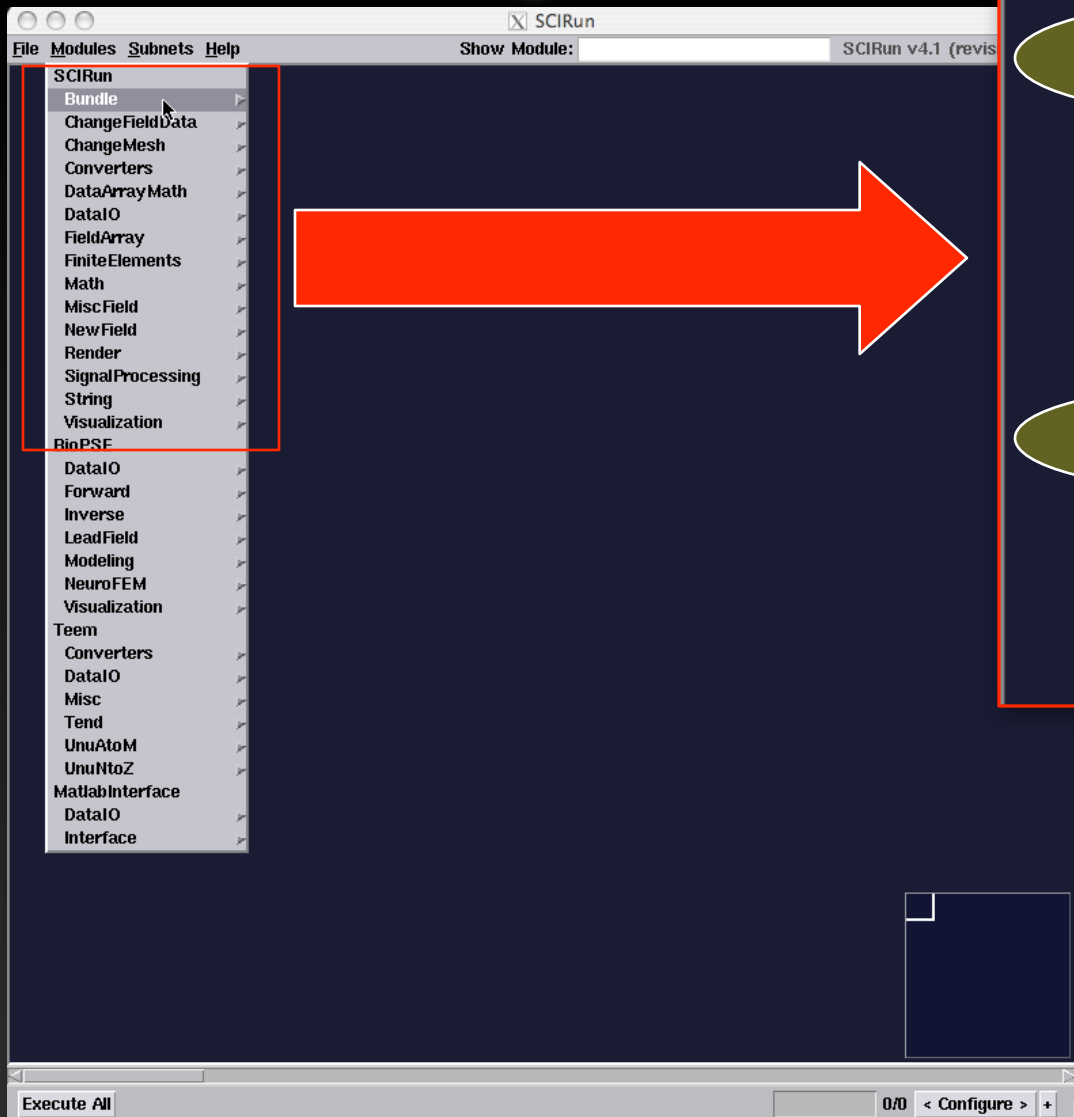


HexVolField



TetVolField

# Field Categories



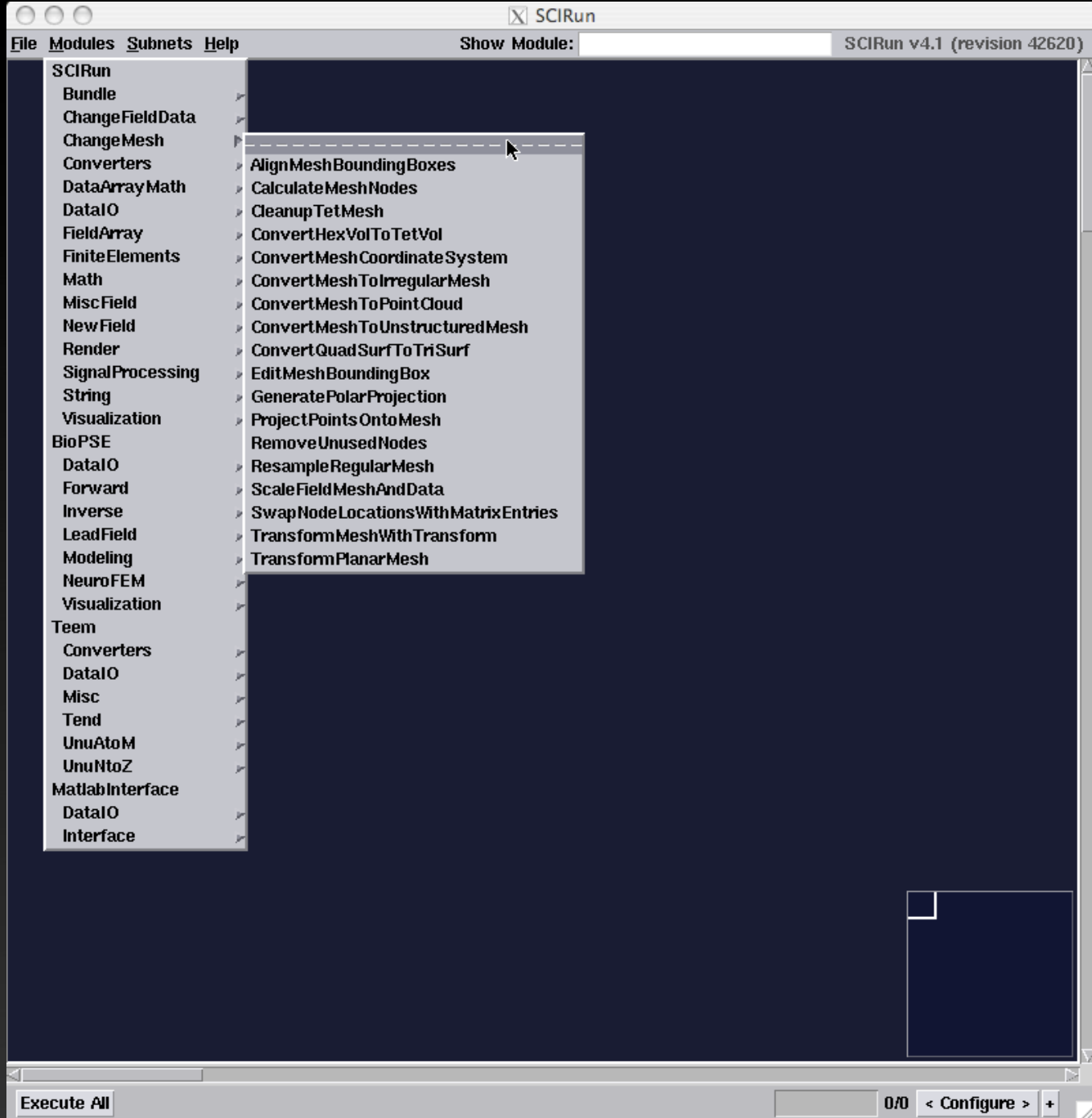
SCIRun v4.1 (revision 42620)

File Modules Subnets Help Show Module:

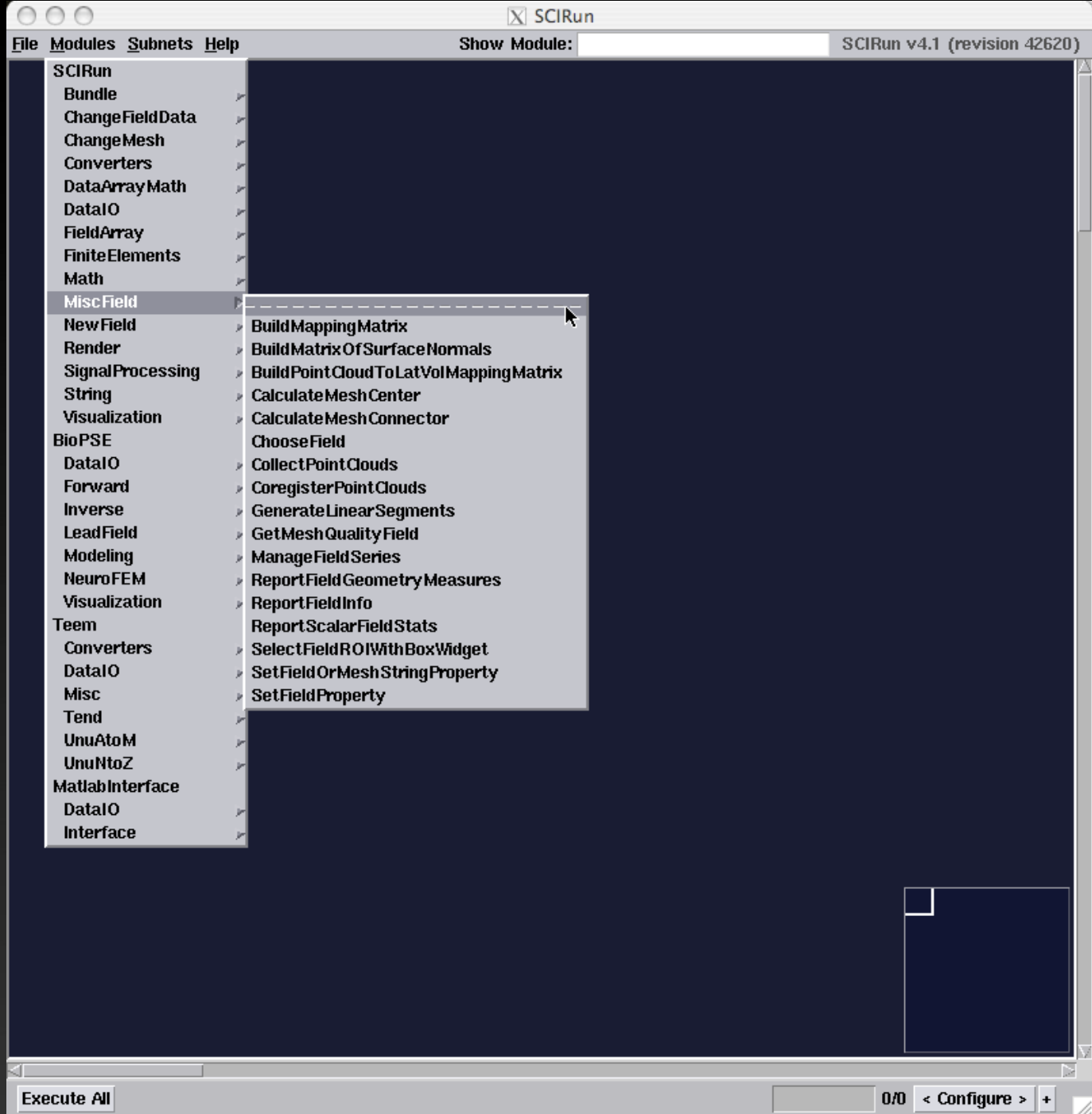
- SCIRun
- Bundle
- ChangeFieldData
- ChangeMesh
- Converters
- DataArrayMath
- DataIO
- FieldArray
- FiniteElements
- Math
- MiscField
- NewField
- Render
- SignalProcessing
- String
- Visualization
- BioPSE
- DataIO
- Forward
- Inverse
- LeadField
- Modeling
- NeuroFEM
- Visualization
- Teem
- Converters
- DataIO
- Misc
- Tend
- UnuAtom
- UnuNtoZ
- MatlabInterface
- DataIO
- Interface

- Apply Filter To Field Data
- Apply Mapping Matrix
- Apply Tri Surf Phase Filter
- Calculate Distance To Field
- Calculate Distance To Field Boundary
- Calculate Field Data
- Calculate Field Data 2
- Calculate Field Data 3
- Calculate Field Data Metric
- Calculate Gradients
- Calculate Inside Which Field
- Calculate Is Inside Field
- Calculate Lat Vol Gradients At Nodes
- Calculate Node Normals
- Calculate Signed Distance To Field
- Calculate Vector Magnitudes
- Convert Field Basis
- Convert Field Data Type
- Convert Indices To Field Data
- Convert Lat Vol Data From Elem To Node
- Convert Lat Vol Data From Node To Elem
- Create Field Data
- Get Field Data
- Map Field Data From Elem To Node
- Map Field Data From Node To Elem
- Map Field Data From Source To Destination
- Map Field Data Onto Elems
- Map Field Data Onto Nodes
- Mask Lat Vol With Tri Surf
- Query Field Data
- Register With Correspondences
- Select And Set Field Data
- Select And Set Field Data 3
- Set Field Data
- Set Field Data To Constant Value
- Smooth Vec Field Median
- Swap Field Data With Matrix Entries

Execute All 0/0 < Configure > +

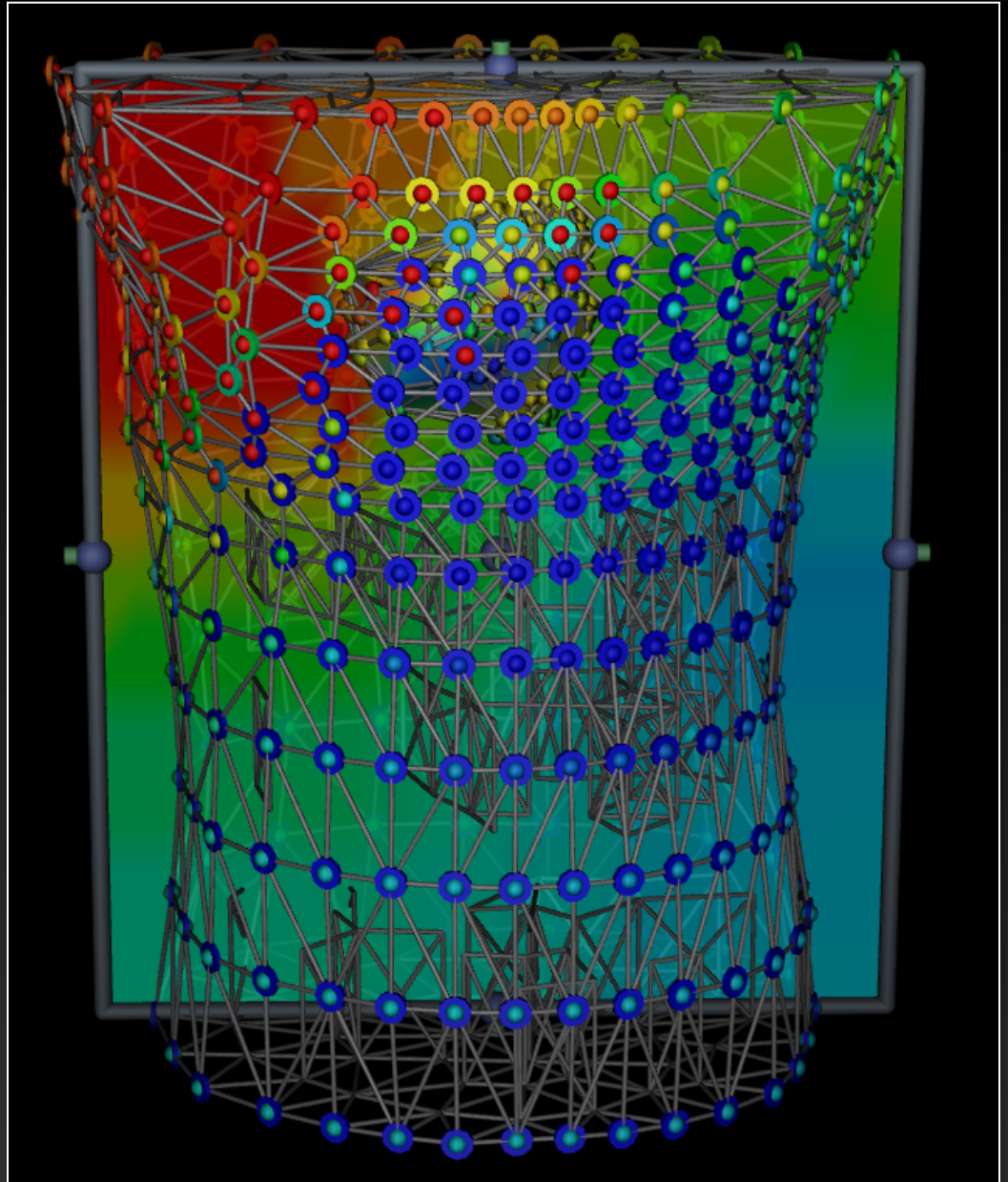
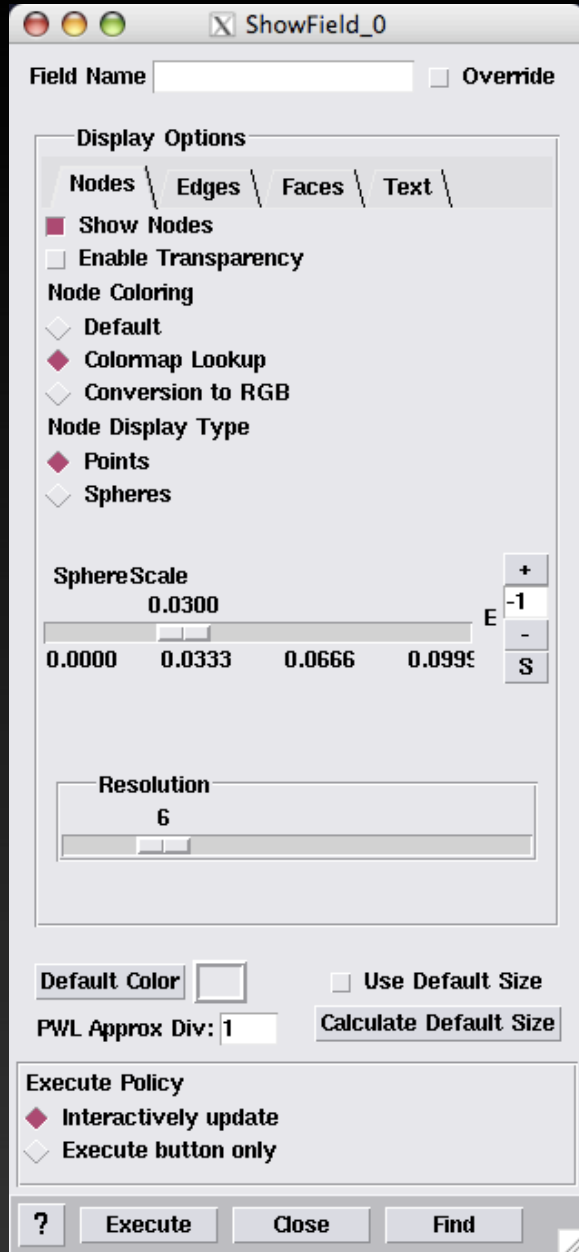








# ShowField



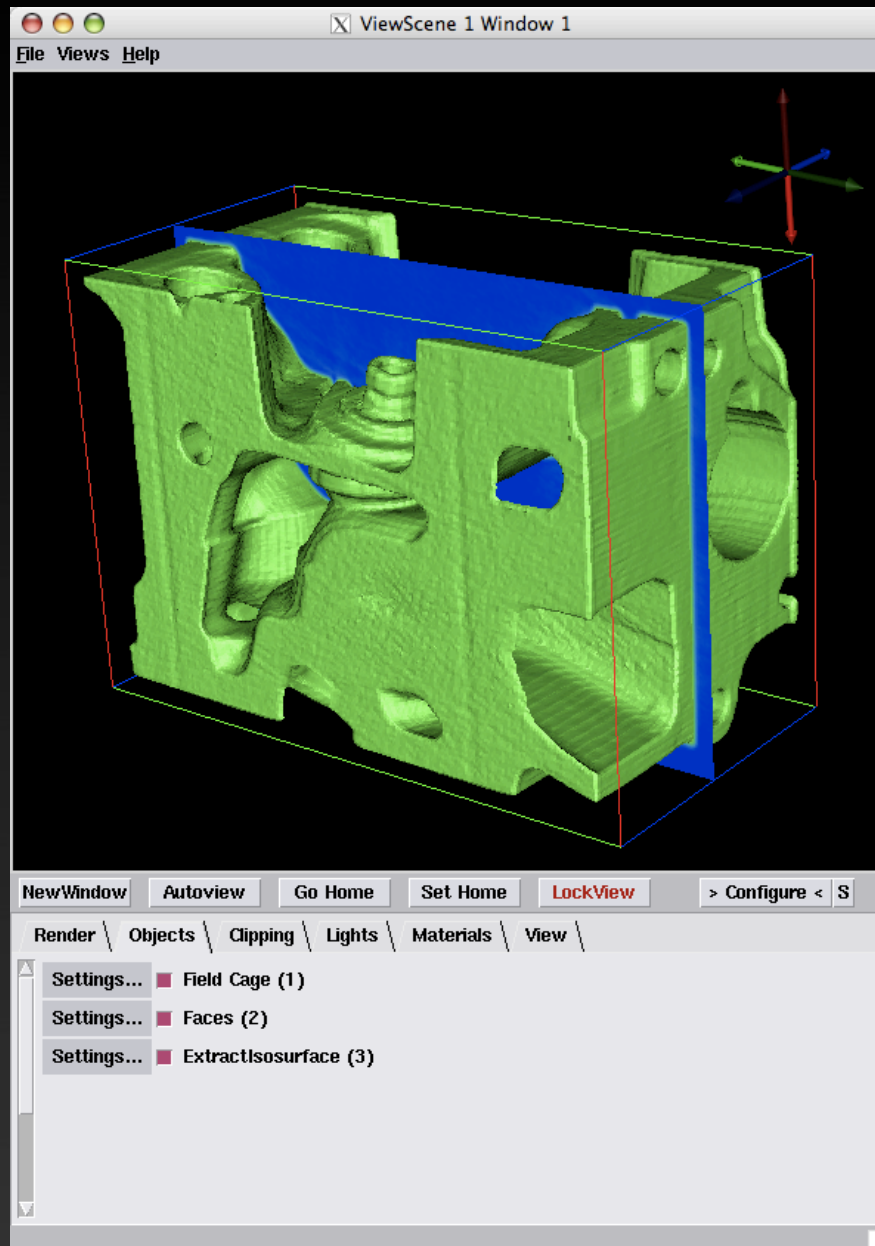




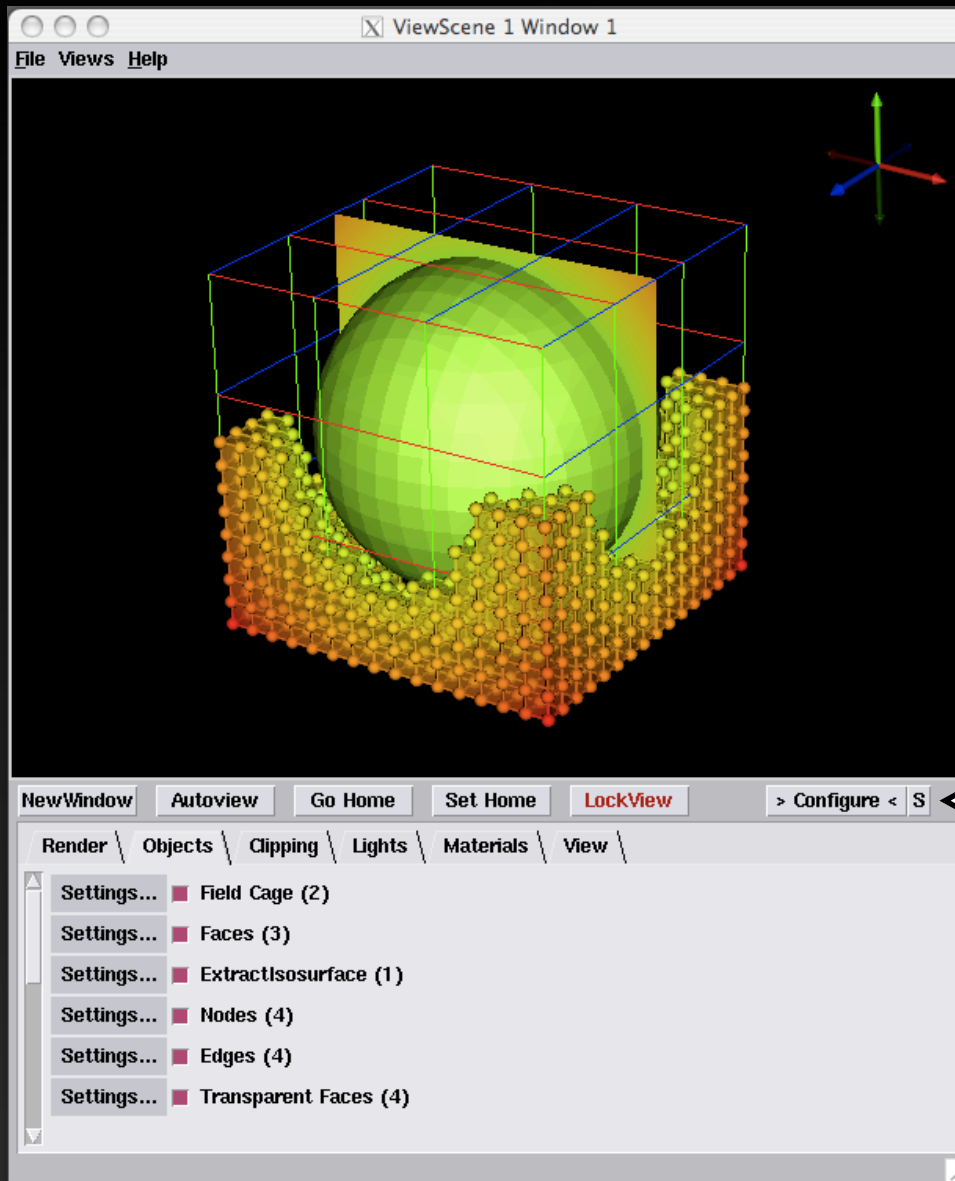
**ShowField / ViewScene**

# ShowField / ViewScene examples

# ViewScene

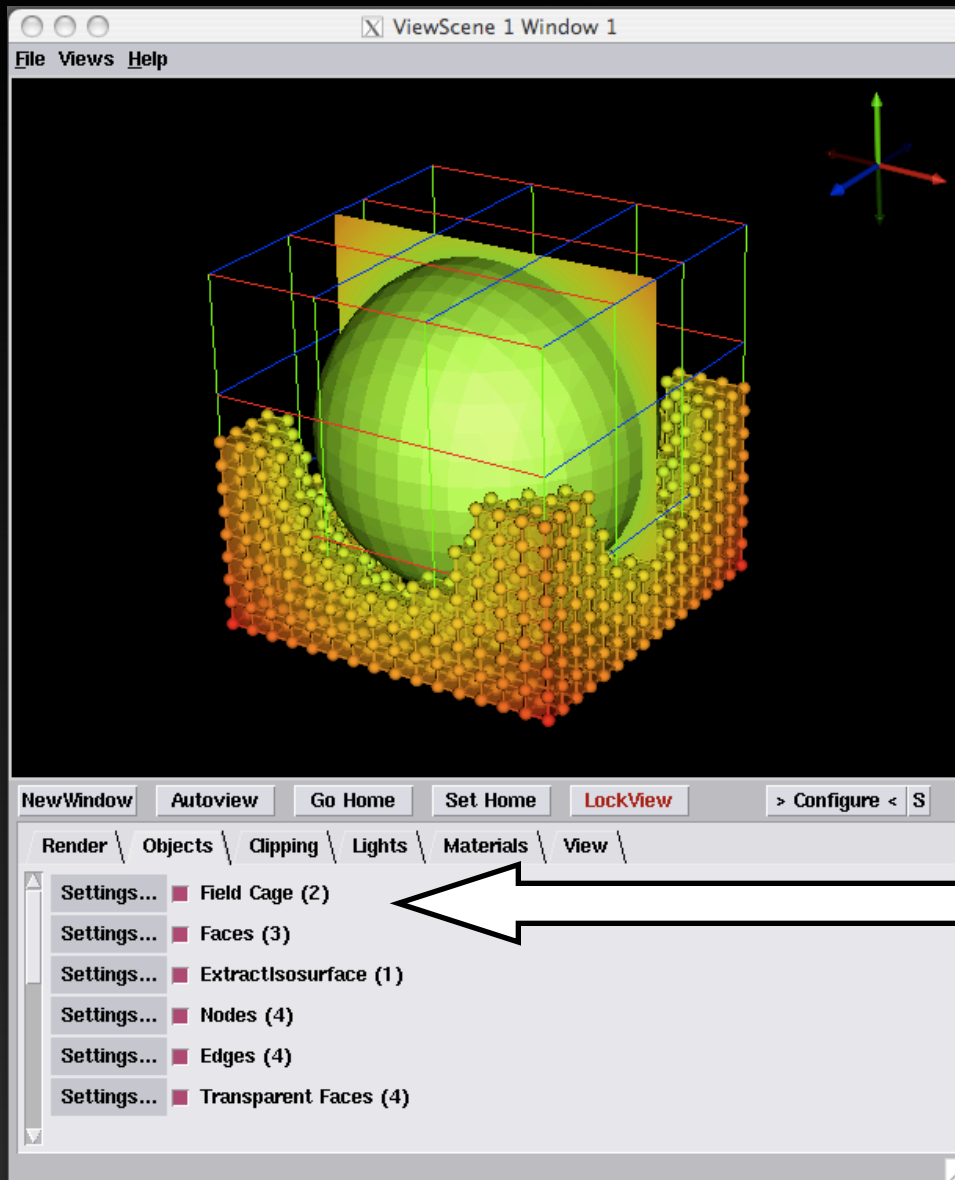


# ViewScene



Press here to open configuration tab

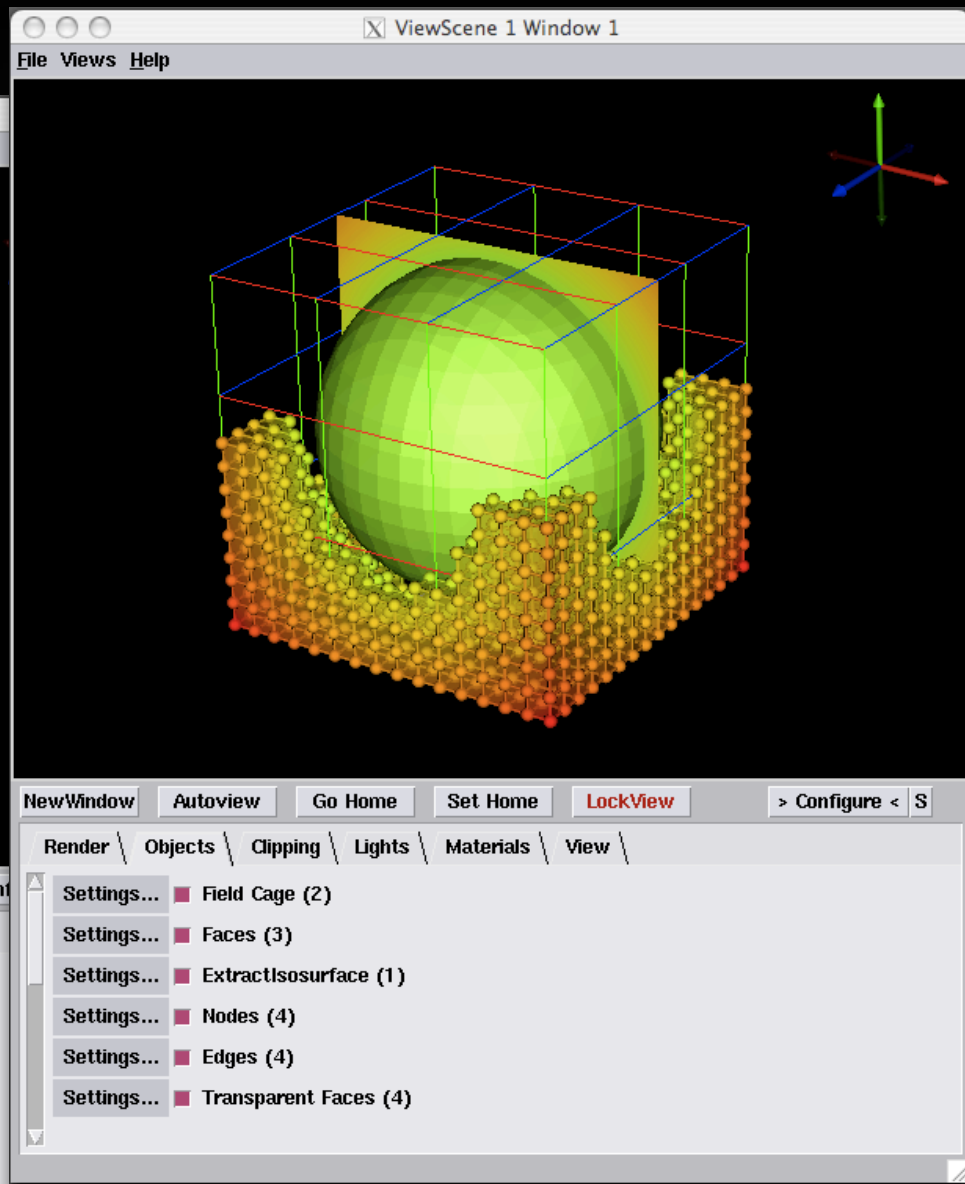
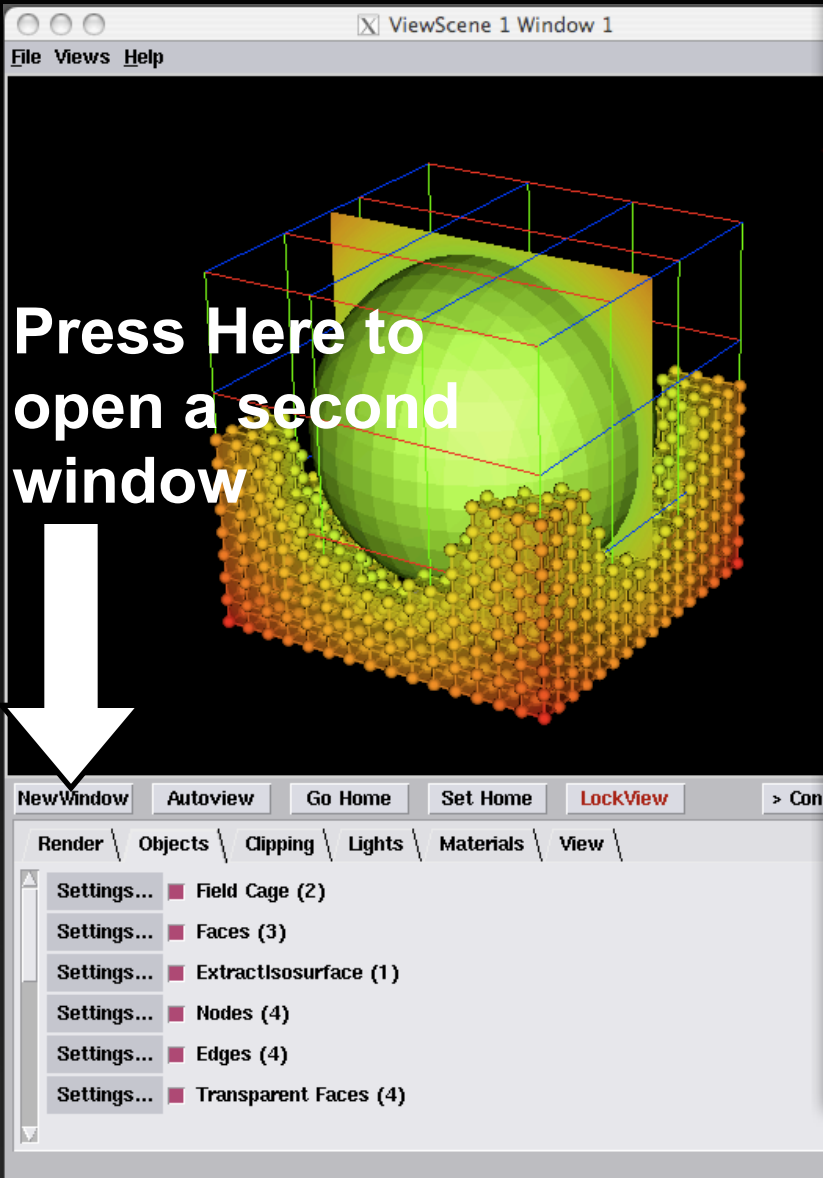
# ViewScene



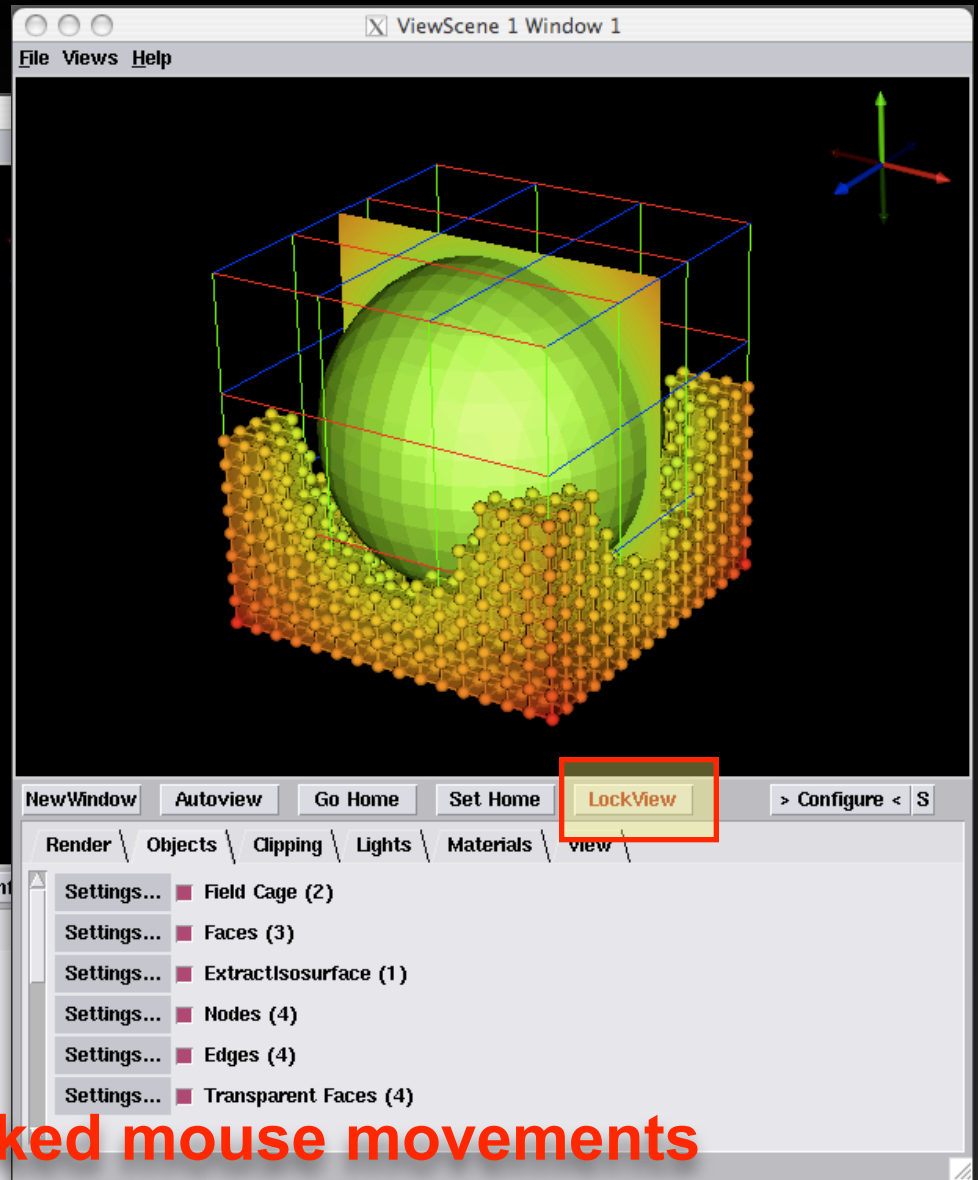
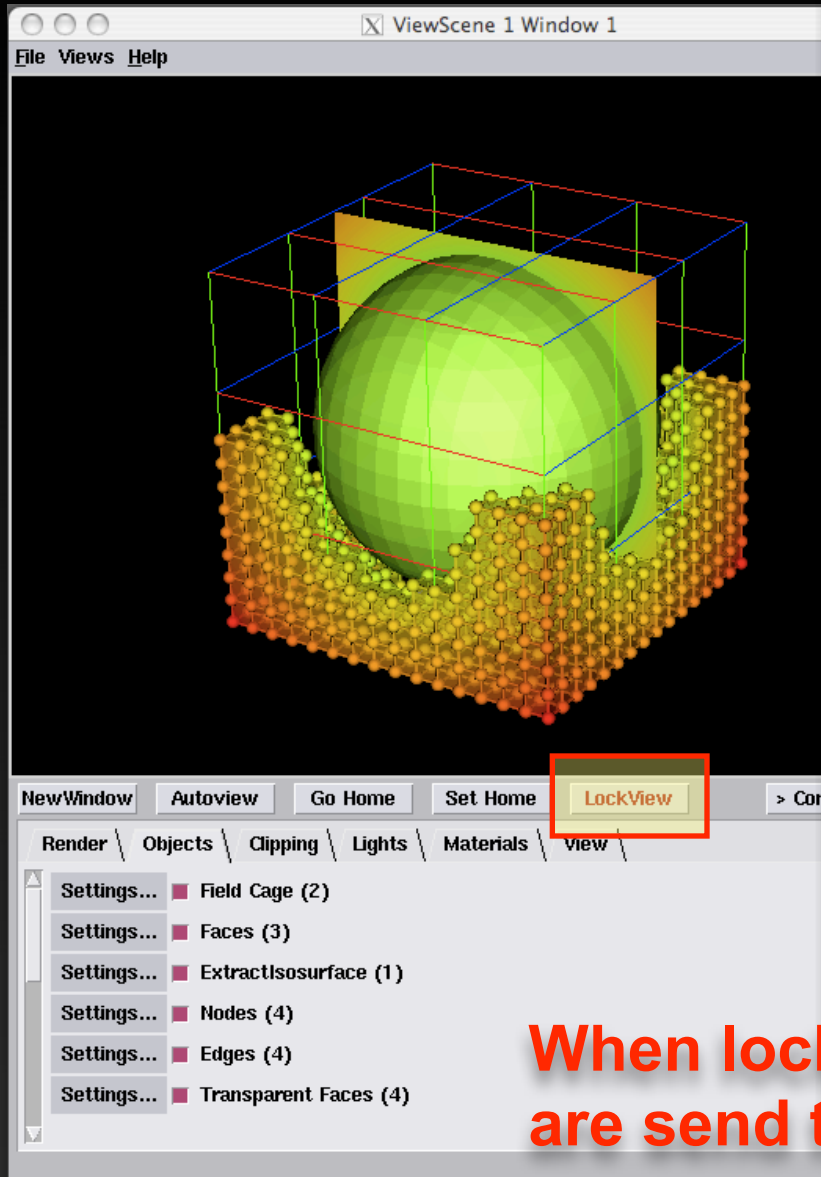
**Select Visual components that are displayed**



# ViewScene

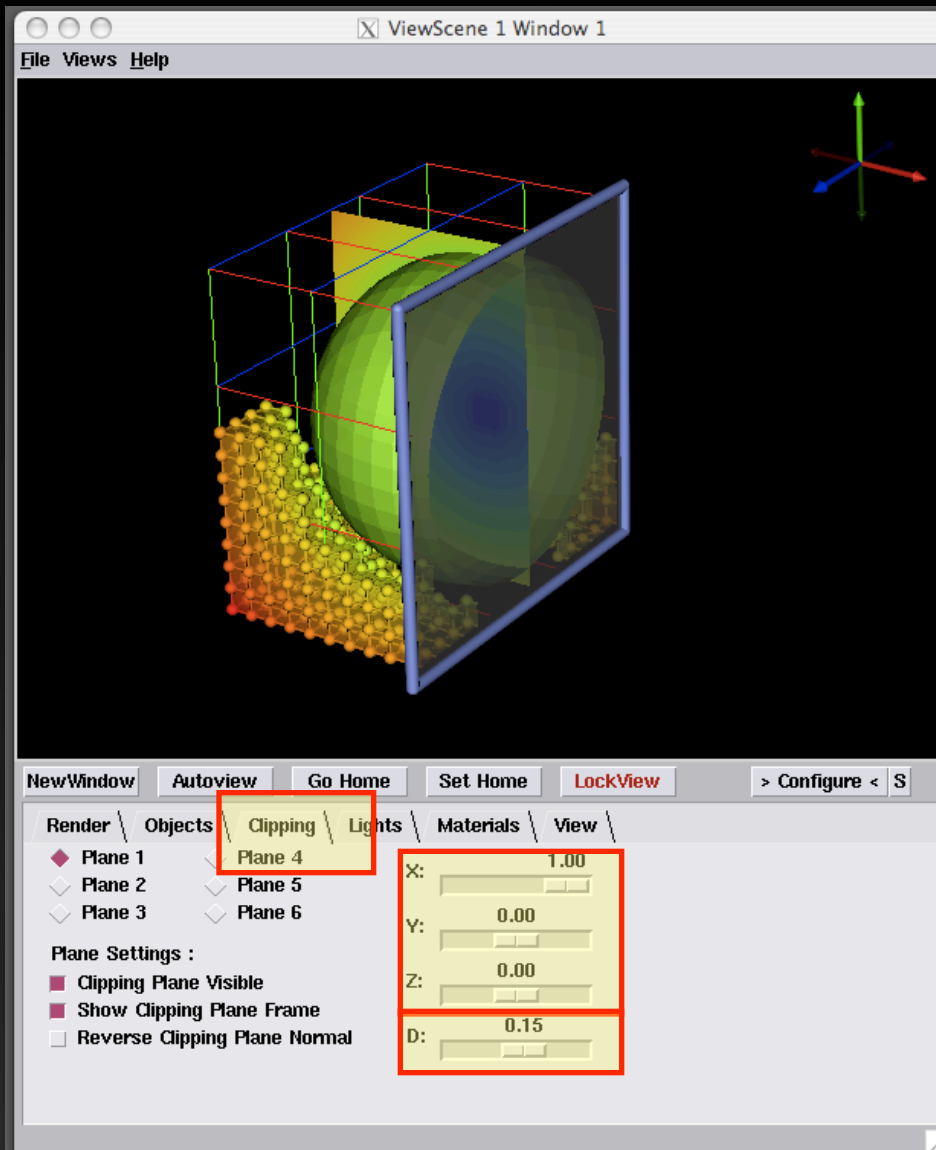


# ViewScene



**When locked mouse movements  
are send to both windows**

# ViewScene Clipping



Orientation of normal for clipping plane

Distance of plane origin in normalized coordinates

# Lab 3B

