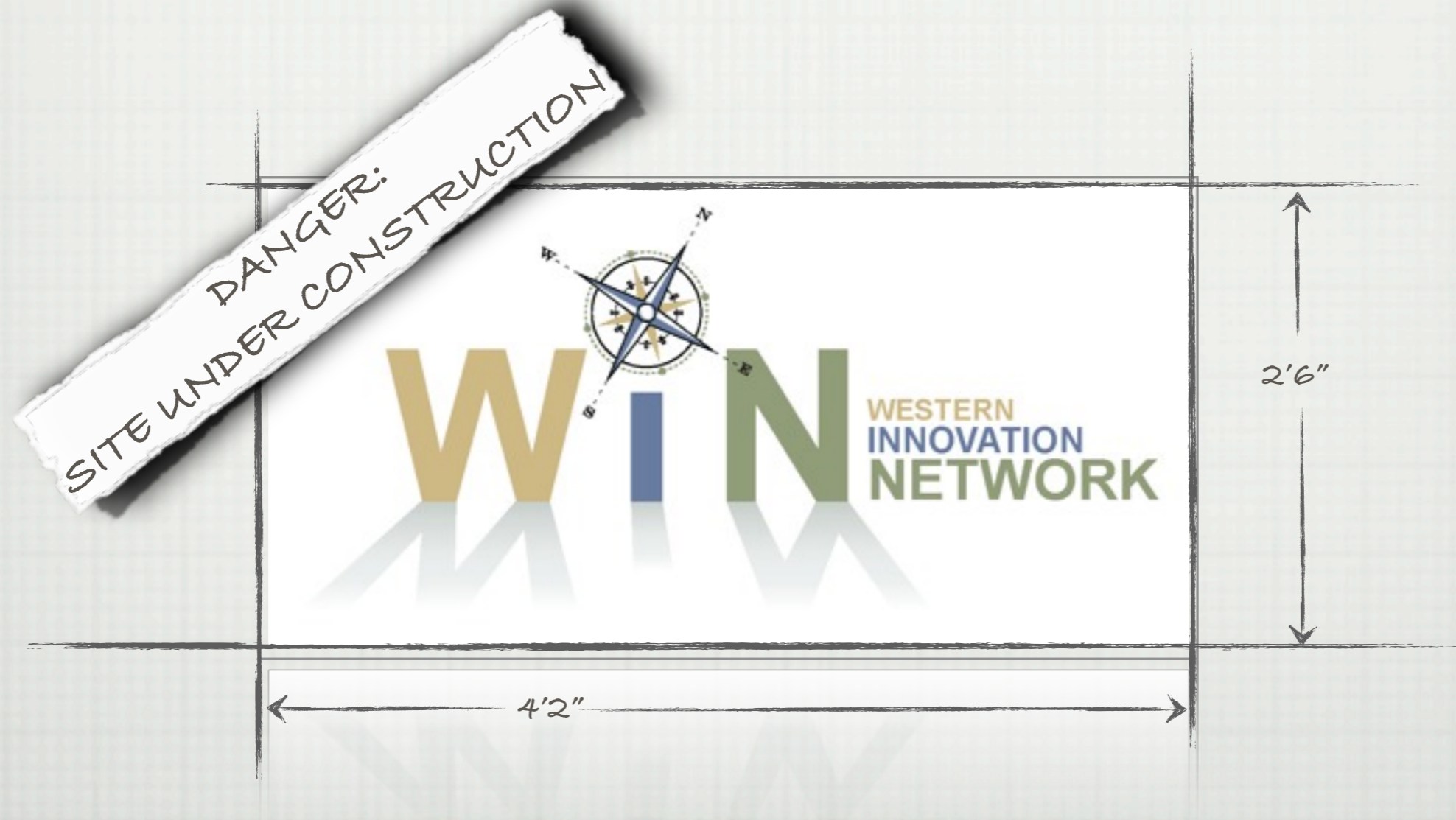


FUTURE FEATURES OF THE



TEMPLATE DATA ENTRY

RESOURCES

EQUIPMENT AND SERVICES

FROM FAB TO BIOSTATISTICS

INVENTION DISCLOSURES AND PATENTS

FOR INVESTIGATORS AND LICENSE MANAGERS

EXPERTISE

INPUT VIA WEB INTERFACE

DATABASE TRANSFER FROM FACULTY TRACKING SYSTEMS

ONTOLOGY-BASED SEARCH

SEARCH

MICROSCOPE

Microscope

RESOURCES

-ITEM 1
LINK
DESCRIPTION
-ITEM 2
LINK
DESCRIPTION
-ITEM 3
LINK
DESCRIPTION
-ITEM 4
LINK
DESCRIPTION
-ITEM 4
LINK
DESCRIPTION
-ITEM 6
LINK
DESCRIPTION
-ITEM 7
LINK
DESCRIPTION

ONTOLOGY-BASED SEARCH

SEARCH

MICROSCOPE

Microscope

RESOURCES

-ITEM 1
LINK
DESCRIPTION

-ITEM 2
LINK
DESCRIPTION

-ITEM 3
LINK
DESCRIPTION

-ITEM 4
LINK
DESCRIPTION

-ITEM 4
LINK
DESCRIPTION

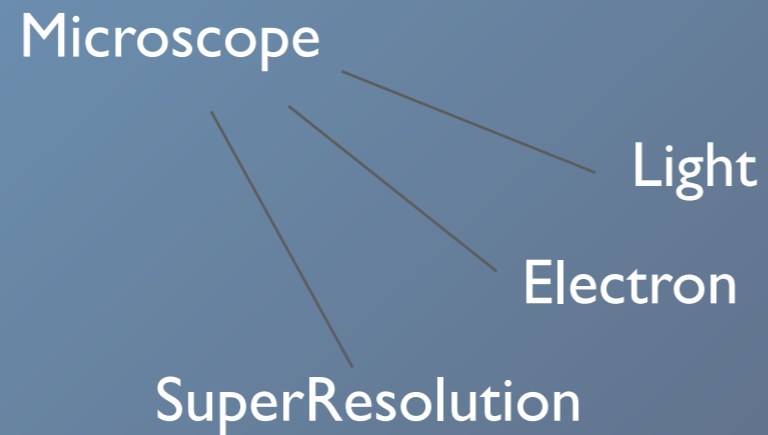
-ITEM 6
LINK
DESCRIPTION

-ITEM 7
LINK
DESCRIPTION

ONTOLOGY-BASED SEARCH

SEARCH

MICROSCOPE



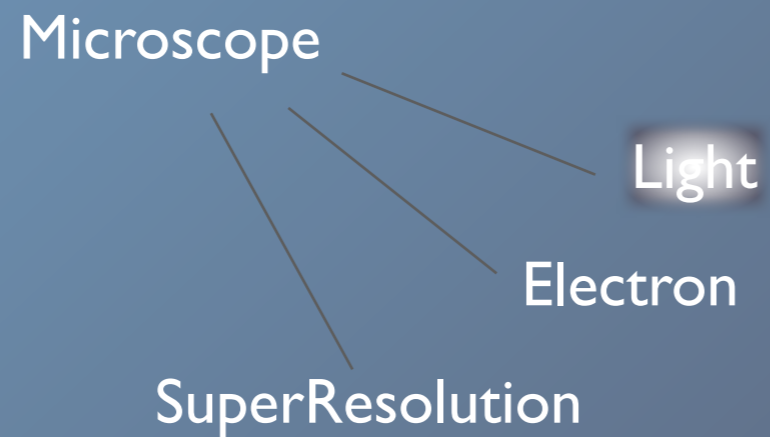
RESOURCES

- ITEM 1'
LINK
DESCRIPTION
- ITEM 2'
LINK
DESCRIPTION
- ITEM 3'
LINK
DESCRIPTION
- ITEM 4'
LINK
DESCRIPTION
- ITEM 5'
LINK
DESCRIPTION
- ITEM 6'
LINK
DESCRIPTION
- ITEM 7'
LINK
DESCRIPTION

ONTOLOGY-BASED SEARCH

SEARCH

MICROSCOPE



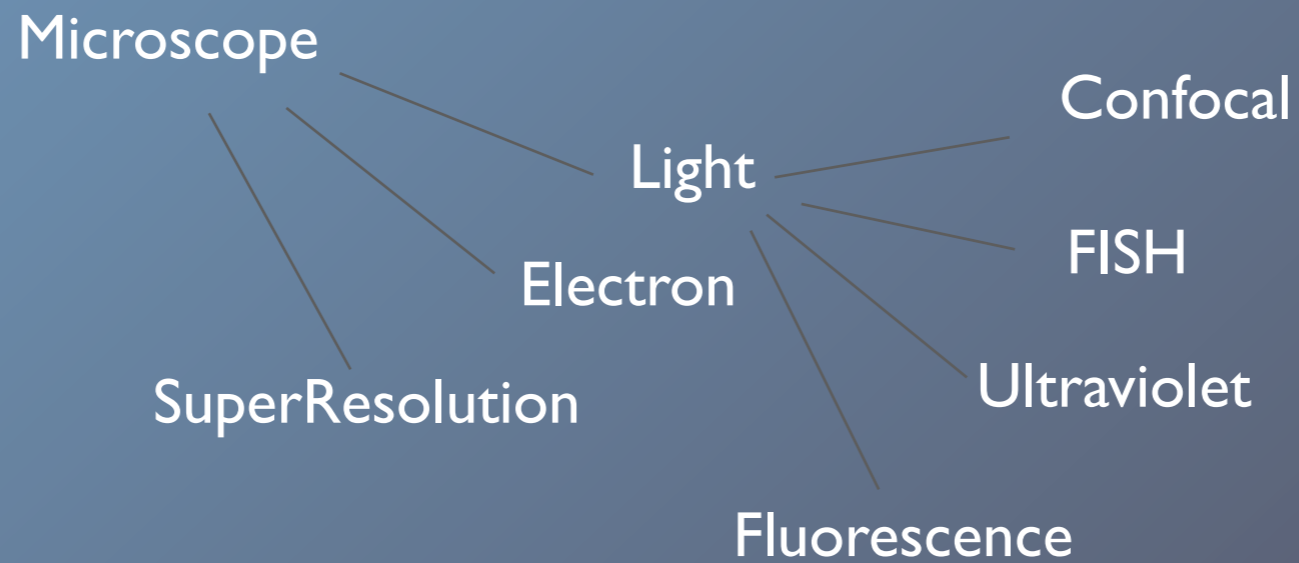
RESOURCES

- ITEM 1'
LINK
DESCRIPTION
- ITEM 2'
LINK
DESCRIPTION
- ITEM 3'
LINK
DESCRIPTION
- ITEM 4'
LINK
DESCRIPTION
- ITEM 5'
LINK
DESCRIPTION
- ITEM 6'
LINK
DESCRIPTION
- ITEM 7'
LINK
DESCRIPTION

ONTOLOGY-BASED SEARCH

SEARCH

MICROSCOPE



RESOURCES

-ITEM 1"
LINK
DESCRIPTION

-ITEM 2"
LINK
DESCRIPTION

-ITEM 3"
LINK
DESCRIPTION

-ITEM 4"
LINK
DESCRIPTION

-ITEM 5"
LINK
DESCRIPTION

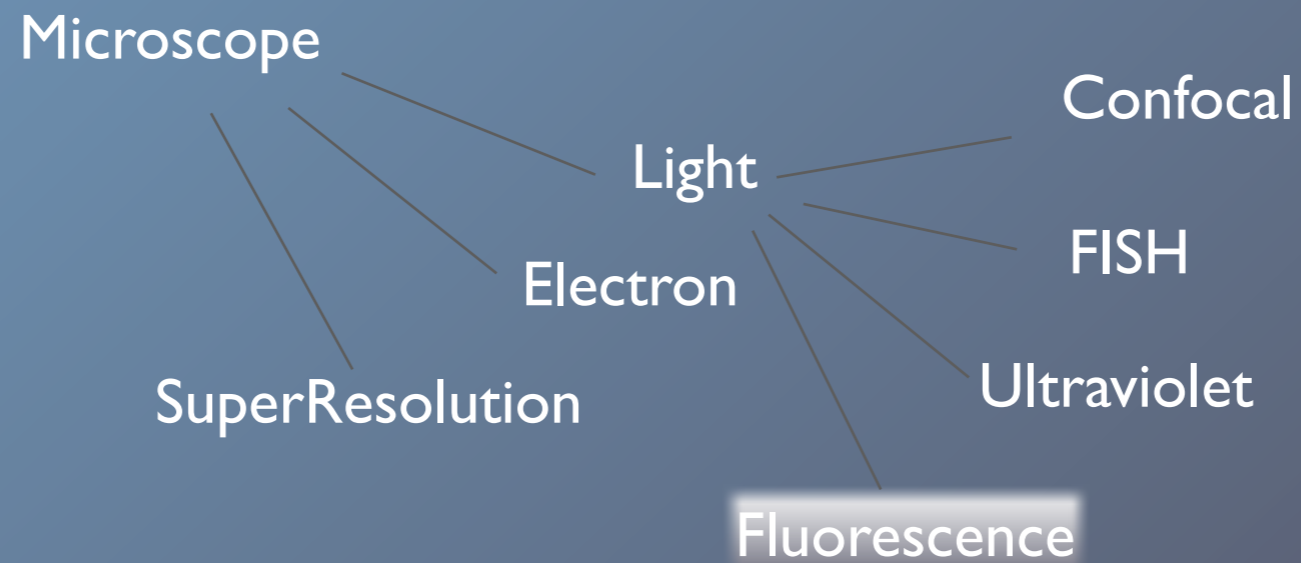
-ITEM 6"
LINK
DESCRIPTION

-ITEM 7"
LINK
DESCRIPTION

ONTOLOGY-BASED SEARCH

SEARCH

MICROSCOPE



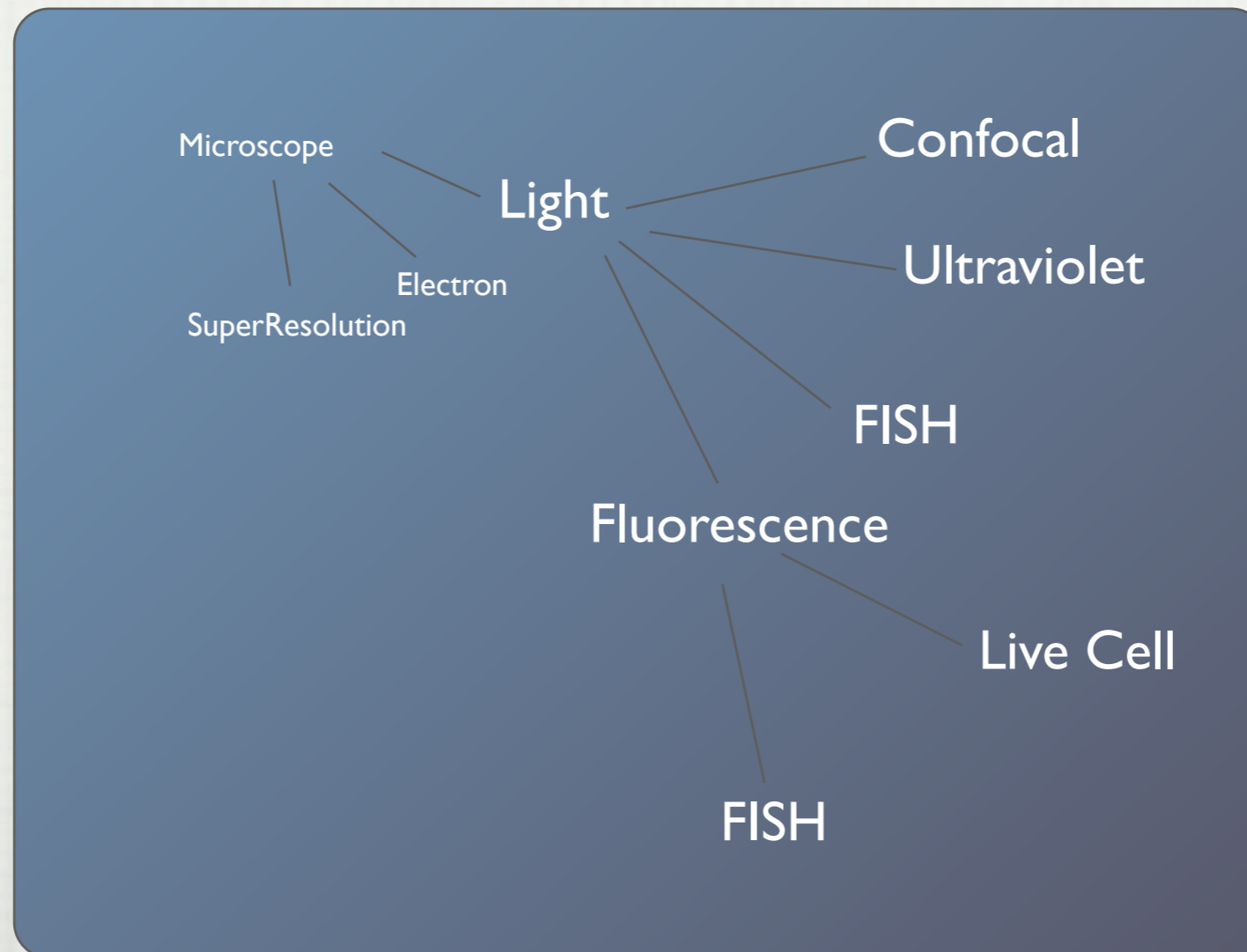
RESOURCES

- ITEM 1"
LINK
DESCRIPTION
- ITEM 2"
LINK
DESCRIPTION
- ITEM 3"
LINK
DESCRIPTION
- ITEM 4"
LINK
DESCRIPTION
- ITEM 5"
LINK
DESCRIPTION
- ITEM 6"
LINK
DESCRIPTION
- ITEM 7"
LINK
DESCRIPTION

ONTOLOGY-BASED SEARCH

SEARCH

MICROSCOPE



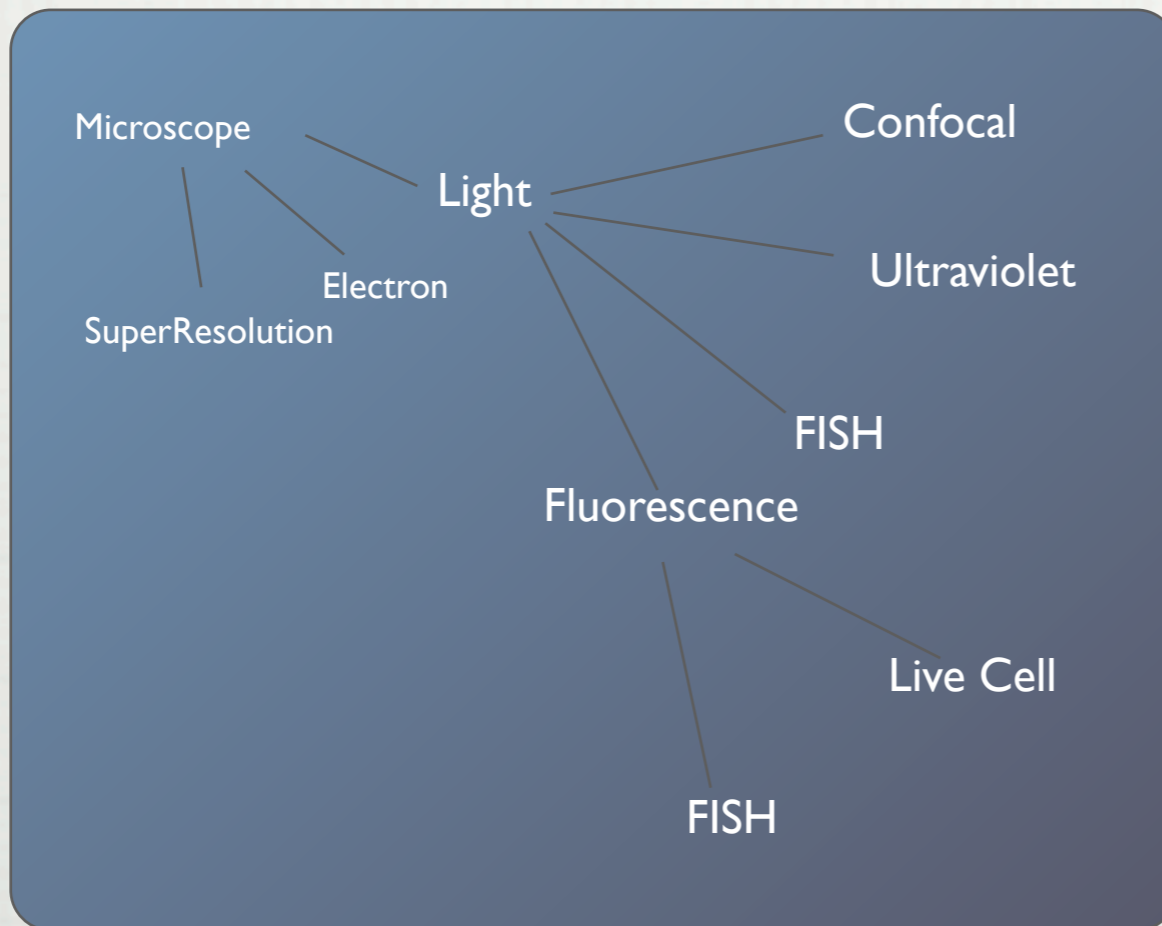
RESOURCES

- ITEM 1"
LINK
DESCRIPTION
- ITEM 2"
LINK
DESCRIPTION
- ITEM 3"
LINK
DESCRIPTION
- ITEM 4"
LINK
DESCRIPTION
- ITEM 5"
LINK
DESCRIPTION
- ITEM 6"
LINK
DESCRIPTION
- ITEM 7"
LINK
DESCRIPTION

ONTOLOGY-BASED SEARCH

SEARCH

MICROSCOPE



RESOURCES

-ITEM 1"
LINK
DESCRIPTION
-ITEM 2"
LINK
DESCRIPTION
-ITEM 3"
LINK
DESCRIPTION
-ITEM 4"
LINK
DESCRIPTION
-ITEM 5"
LINK
DESCRIPTION
-ITEM 6"
LINK
DESCRIPTION
-ITEM 7"
LINK
DESCRIPTION

EXPERTISE

-ITEM 1"
LINK
DESCRIPTION
-ITEM 2"
LINK
DESCRIPTION
-ITEM 3"
LINK
DESCRIPTION
-ITEM 4"
LINK
DESCRIPTION
-ITEM 5"
LINK
DESCRIPTION
-ITEM 6"
LINK
DESCRIPTION
-ITEM 7"
LINK
DESCRIPTION

ORGANIC ONTOLOGY

The University of Utah
HSC Core Research Facilities

campus: [a to z index](#) | [map](#) | [directory](#) | [calendar](#)

HOME | CORE RESOURCES LOGON | NEWS | CONTACT

Search

- Biostatistics
- Cell Imaging/Fluorescence Microscopy
- DNA Sequencing
- DNA/Peptide
- Electron Microscopy
- Flow Cytometry
- Genomics
- Mass Spectrometry and Proteomics
- Microarray
- Metabolomics
- Bioinformatics
- NMR
- Protein Interaction
- Small Animal Imaging
- Transgenic/Gene targeting Mouse Facility
- CZAR(zebrafish)
- Human ORFs

RELATED WEBSITES

- University Research
- Human Genetics
- Utah Home Page

Log In [My.Utah.edu](#)



HSC Core Research Facilities

Electron Microscopy Facility

MAIN

This facility provides a variety of microscopy services to the basic science and clinical communities. Services and technical capabilities include preparation of specimens for light and electron microscopy, specimen observation and image capture for light microscopy (brightfield, fluorescence, differential interference contrast, etc.), and specimen observation and image capture for transmission and scanning electron microscopy. Other specialized techniques that are available are quantitative morphology (image analysis), histo/cytochemistry, and immunohisto/cytochemistry at the light and electron microscope levels.

The EM Core Facility is available for both Transmission Electron Microscopy (TEM) and Scanning Electron Microscopy (SEM). We process tissue from fixative through plastic and provide a variety of support services including Immunobed sectioning and protocol consultation

CORE LAB RESOURCES

- Main
- Lab members
- News
- Director
- Contact
- Services
- Batch Viewer Logon

HSC Core Research Facilities

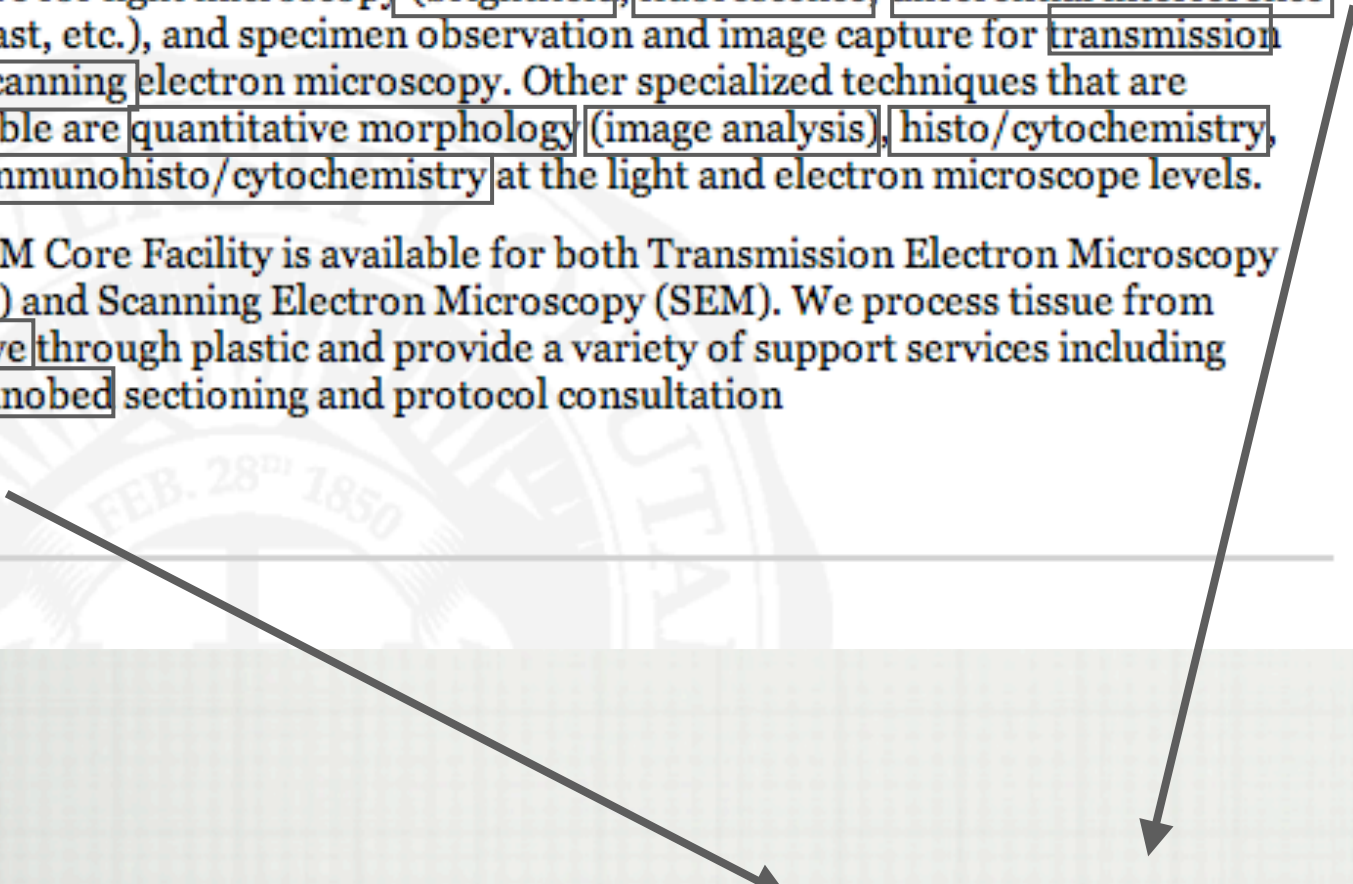
Electron Microscopy Facility

MAIN

This facility provides a variety of **microscopy** services to the basic science and clinical communities. Services and technical capabilities include preparation of specimens for **light** and **electron microscopy**, specimen observation and image capture for light microscopy (**brightfield**, **fluorescence**, **differential interference contrast**, etc.), and specimen observation and image capture for **transmission** and **scanning electron microscopy**. Other specialized techniques that are available are **quantitative morphology (image analysis)**, **histo/cytochemistry**, and **immunohisto/cytochemistry** at the light and electron microscope levels.

The EM Core Facility is available for both Transmission Electron Microscopy (TEM) and Scanning Electron Microscopy (SEM). We process tissue from **fixative** through plastic and provide a variety of support services including **Immunobed** sectioning and protocol consultation

- ▣ [News](#)
- ▣ [Director](#)
- ▣ [Contact](#)
- ▣ [Services](#)
- ▣ [Batch Viewer Logon](#)



Microscope, Light, Electron, Brightfield
Florescence, Differential Interference
Transmission, Scanning, Quantitative Morphology
Image Analysis, Hist/cytochemistry, Fixative,
Immunobed

IP MARKETPLACE

- USING THE ONTOLOGY-BASED SEARCH
 - LISTING OF INVENTION DISCLOSURES
- COMMUNITY VETTING OF DISCLOSURES VIA BIDDING
 - BRINGS IP EXPERTISE TO BEAR ON ID'S
- BUILT AUTOMAGICALLY
 - VIA "WIN" ID TEMPLATE
- BASE ONTOLOGY
 - USPTO CLASSIFICATIONS

SUMMARY

- COMING SOON TO THE "WIN"
- TEMPLATED ENTRY FOR RESOURCES, INNOVATIONS, EXPERTS
- ONTOLOGY SEARCH FOR RESOURCES, INNOVATIONS, EXPERTS
- AUTOMAGIC ONTOLOGY CREATED AND DOCUMENT CLASSIFICATION
- IP MARKETPLACE

