

Analyzing Source Sampling to Reduce Error in ECG Forward Simulations

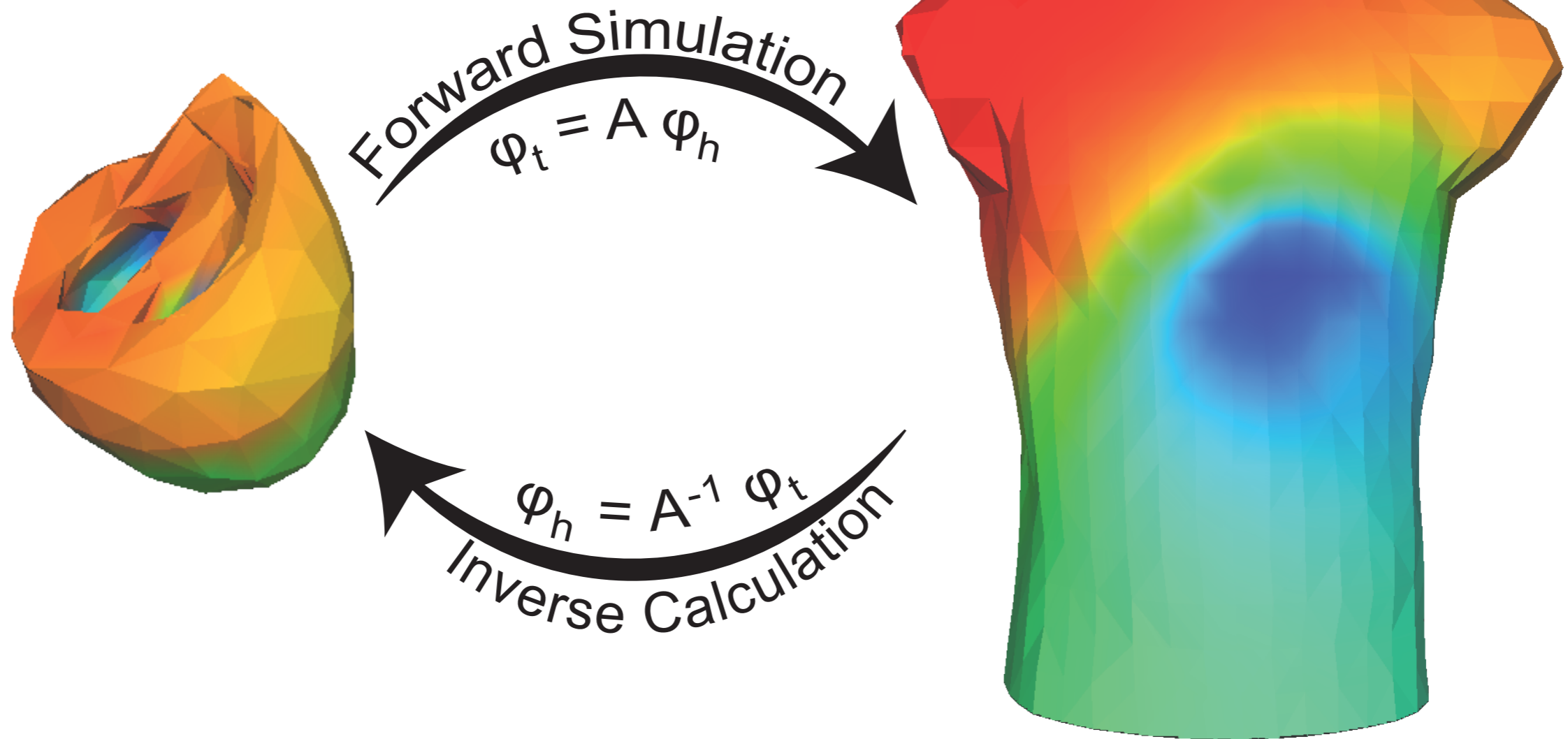
Jess Tate, Karli Gillette, Brett Burton, Wilson Good,
Jaume Coll-Font, Dana Brooks, Rob MacLeod

University of Utah
Northeastern University
Graz University

ECG Imaging

Heart Potentials (φ_h)

Torso Potentials (φ_t)

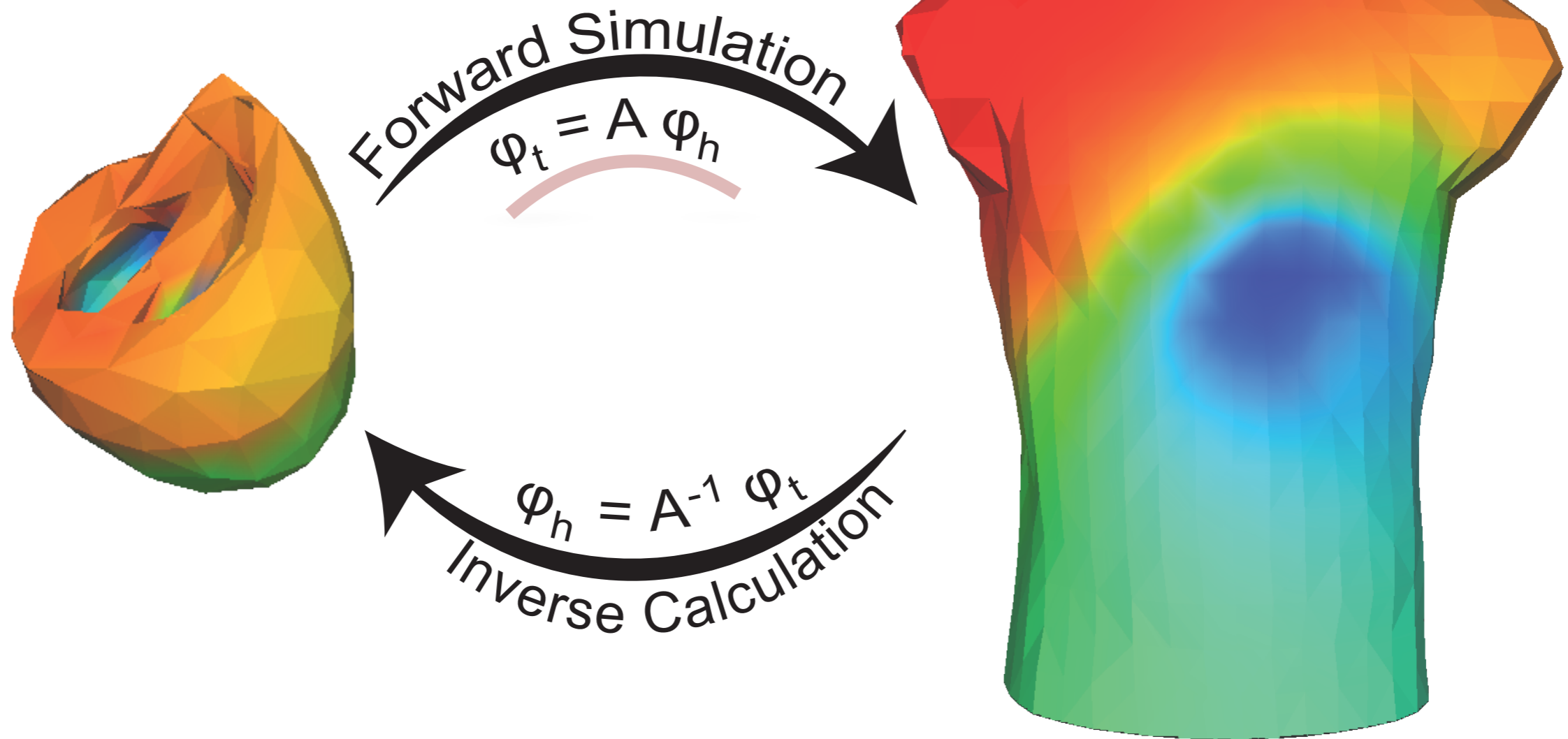


ECG Imaging Relies on Accurate Forward Models

ECG Imaging

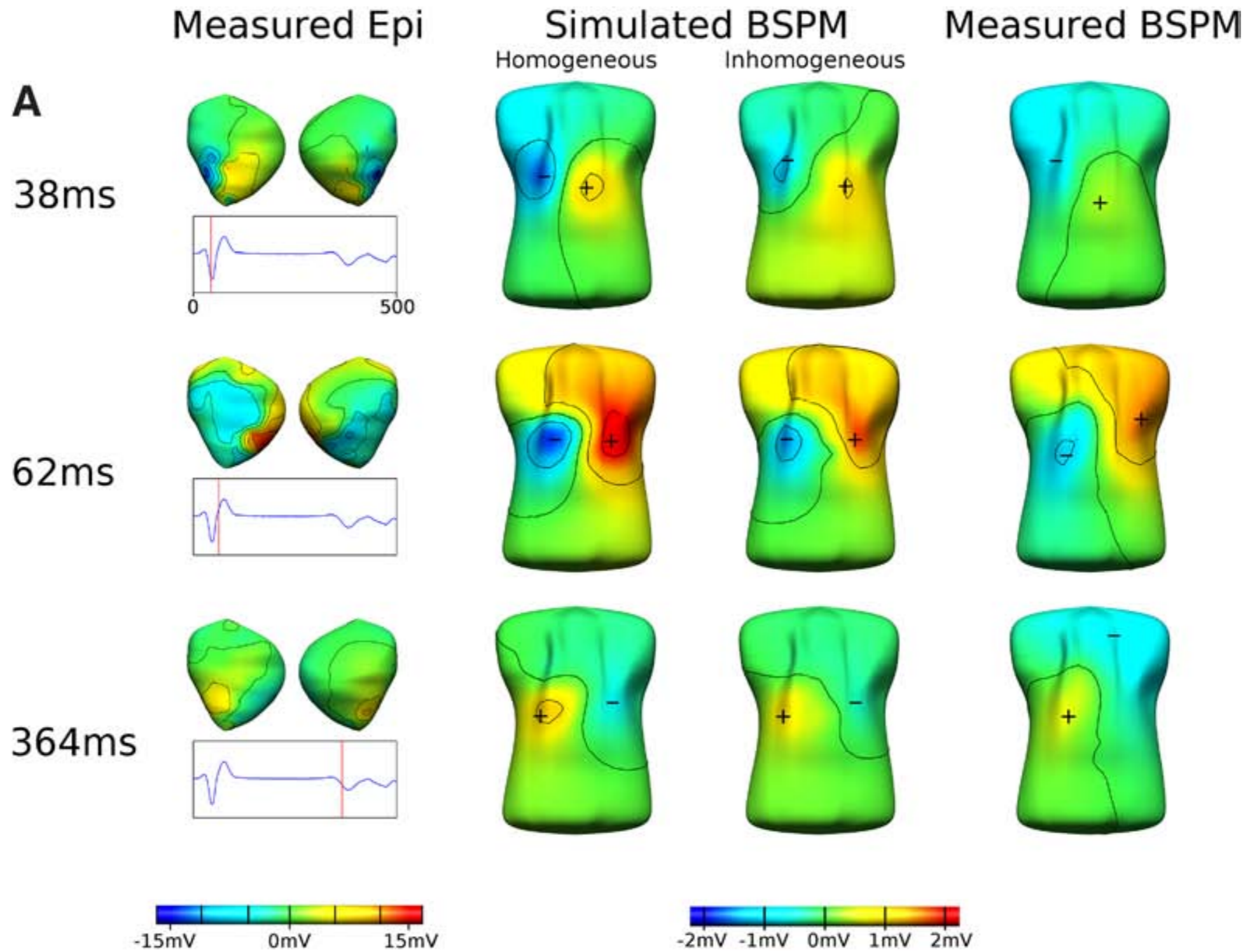
Heart Potentials (φ_h)

Torso Potentials (φ_t)



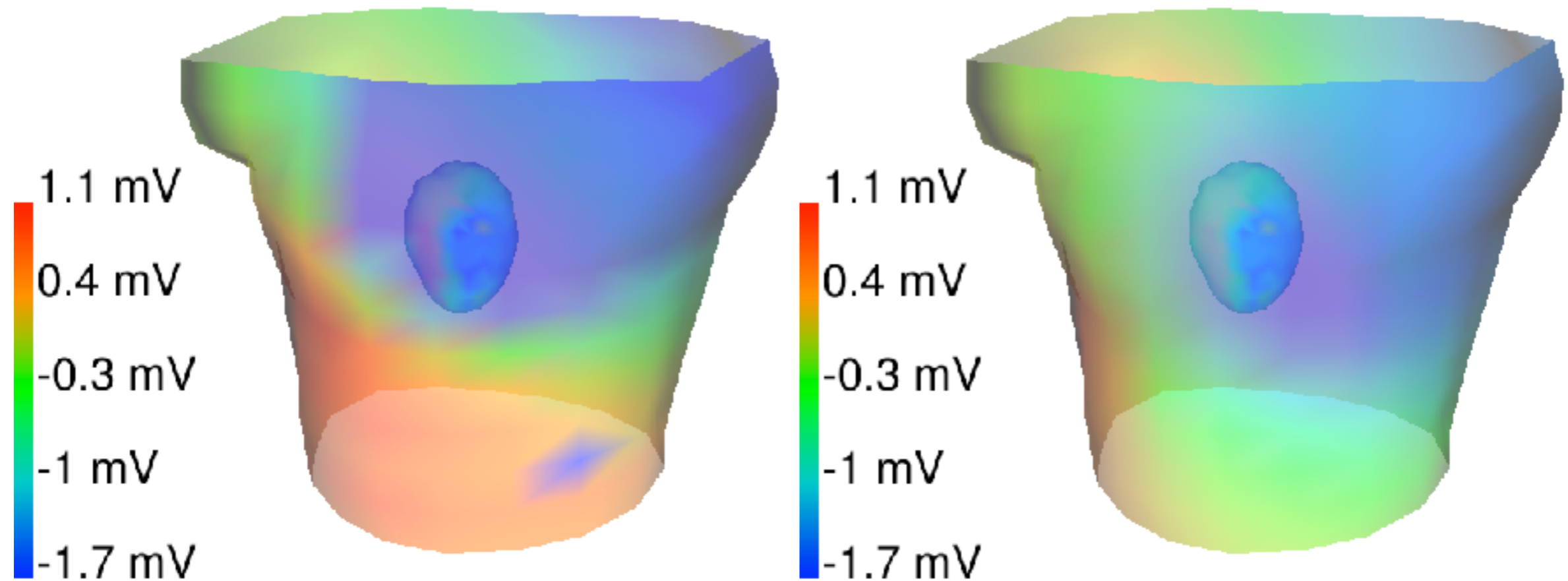
ECG Imaging Relies on Accurate Forward Models

Error in Forward Simulation



Bear, et al., CircArrhythmElectrophysiol.2015;8:677-684.

Error in Forward Simulation

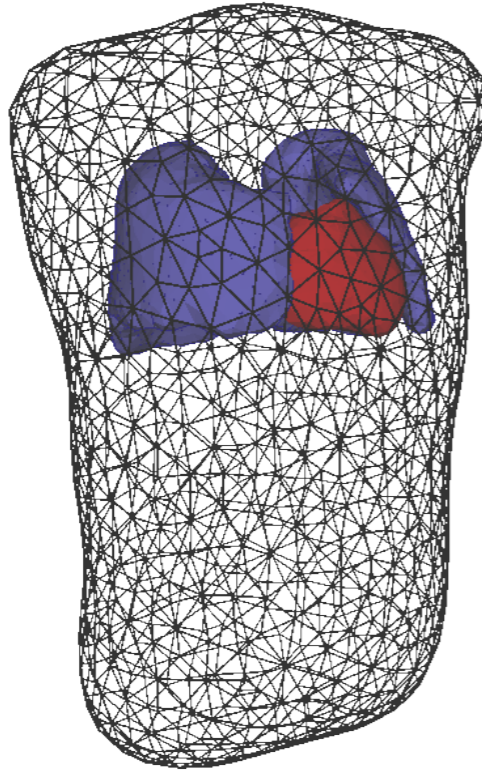


Recorded

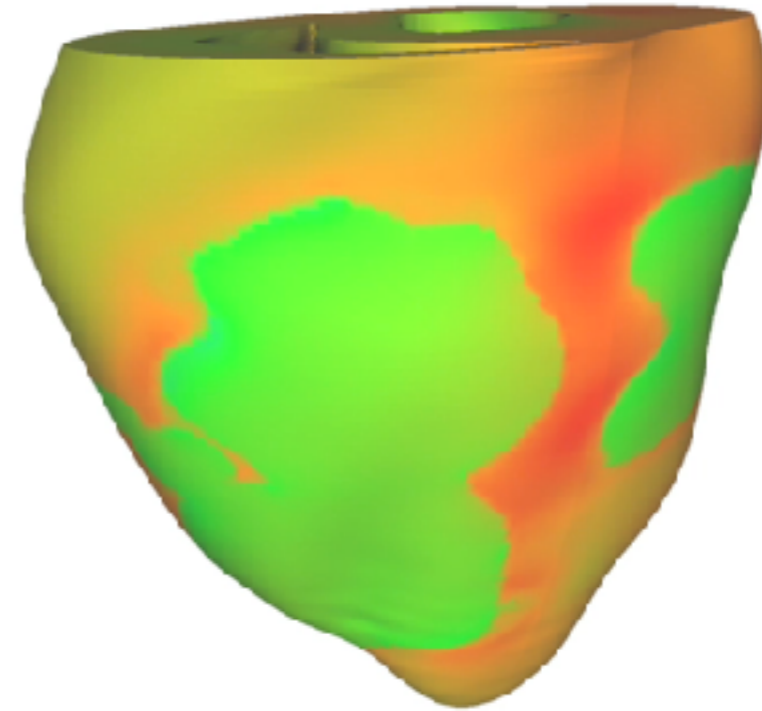
Simulated

Origins of Error

Geometry

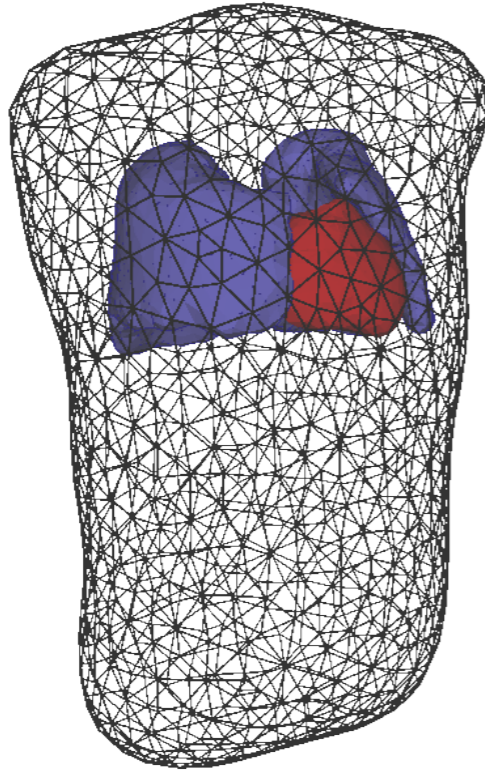


Sources

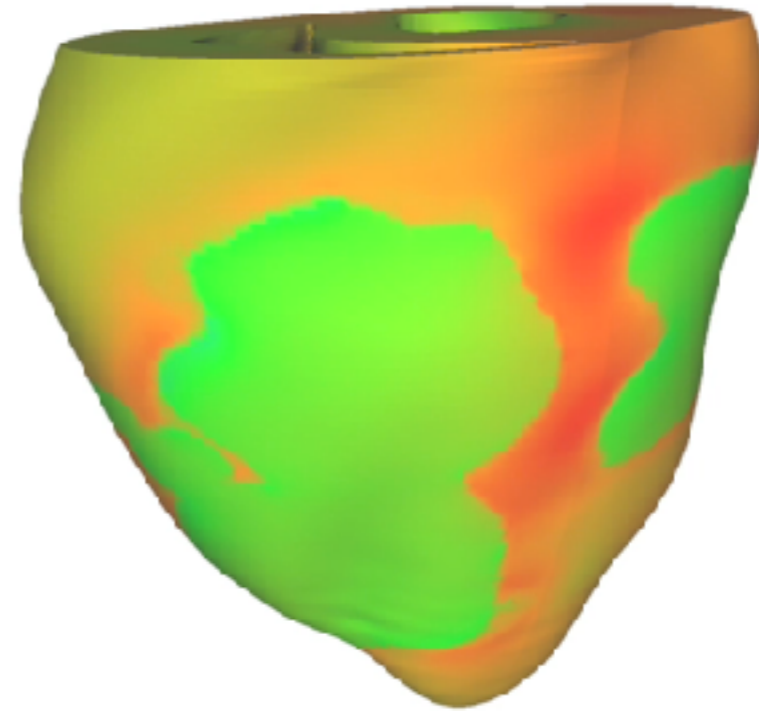


Origins of Error

Geometry



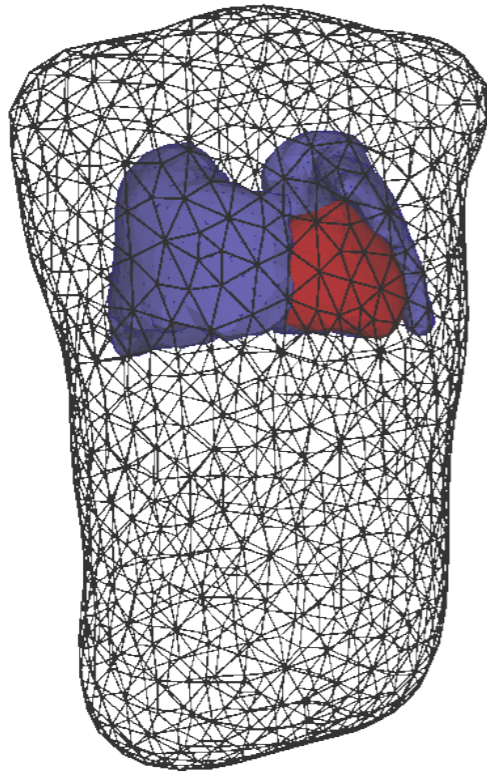
Sources



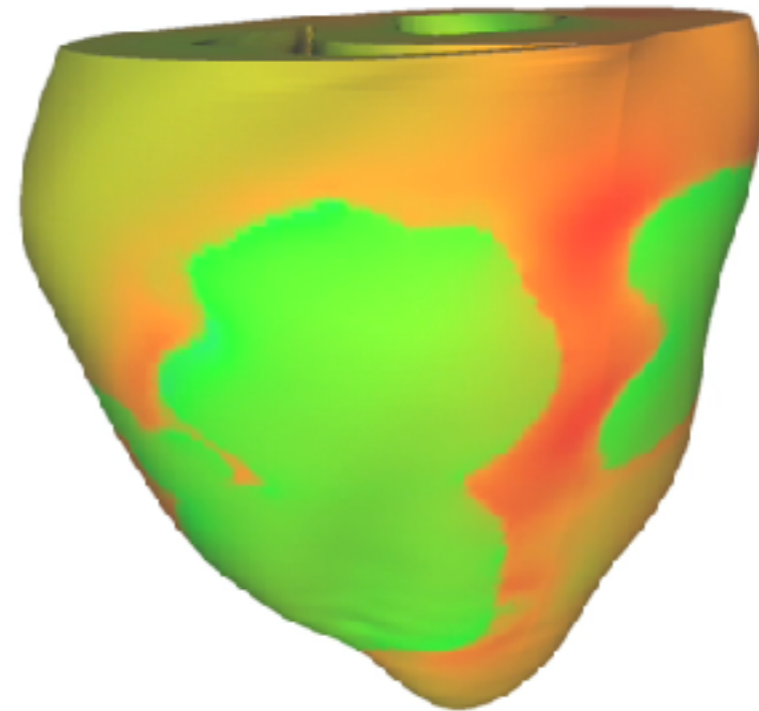
Origins of Error

Geometry

Matrix
A



Sources

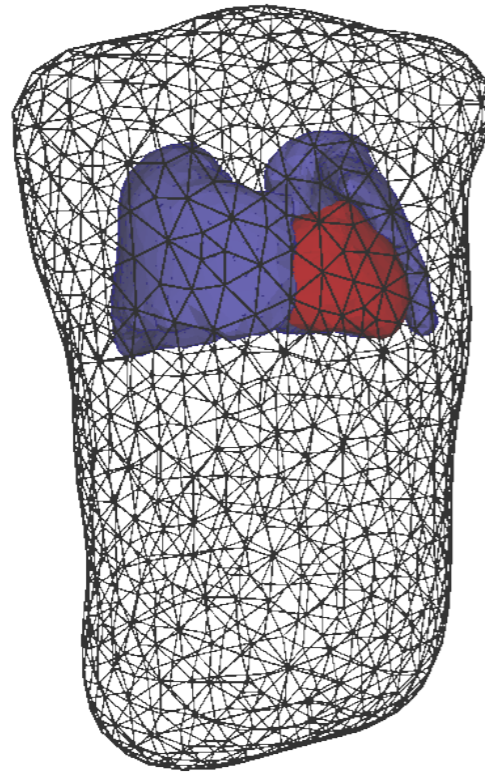


Vector
 ϕ_h

Origins of Error

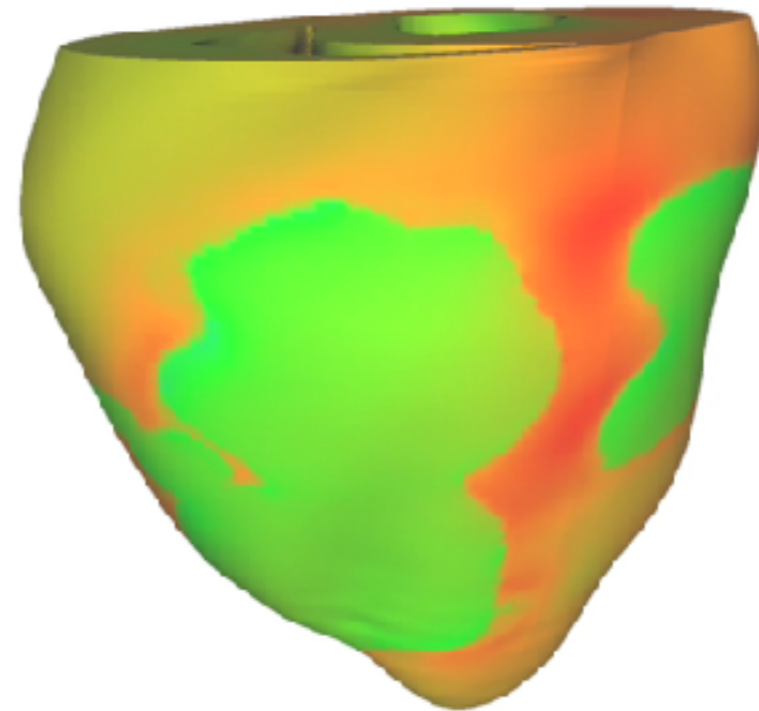
Geometry

Matrix
A



Sources

Vector
 ϕ_h

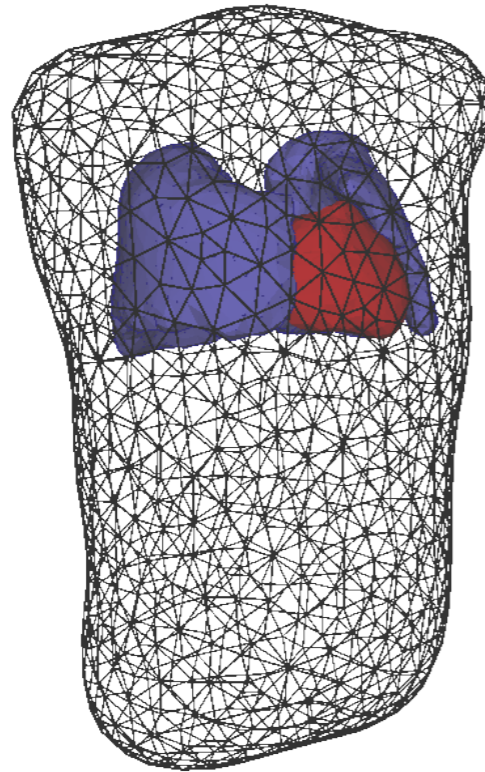


Registration
Segmentation
Conductivities
Meshing

Origins of Error

Geometry

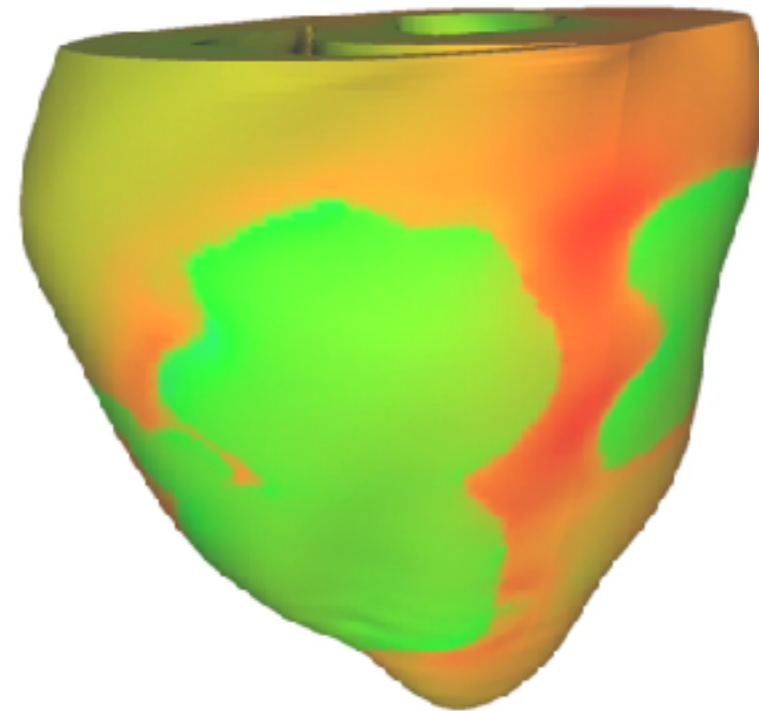
Matrix
A



Registration
Segmentation
Conductivities
Meshing

Sources

Vector
 ϕ_h

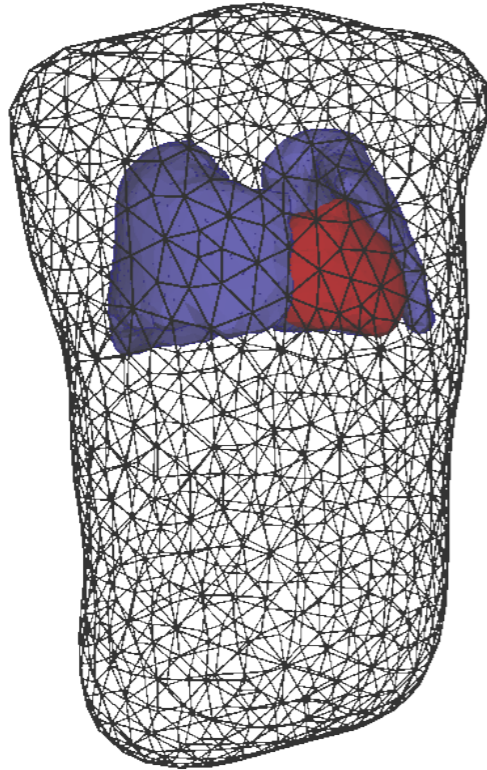


Surface Accuracy
Eq. Source Model
Recording Noise
Source Sampling

Origins of Error

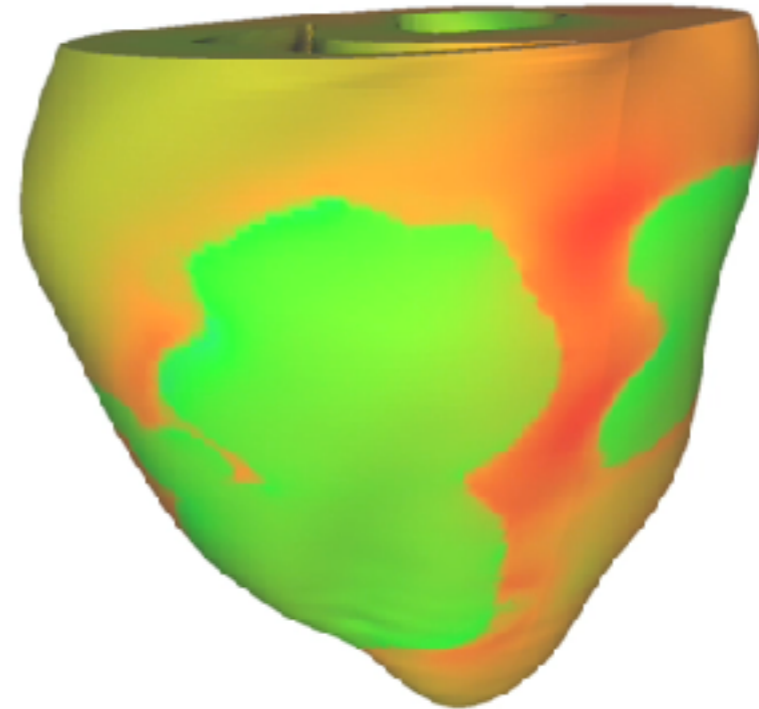
Geometry

Matrix
A



Sources

Vector
 ϕ_h

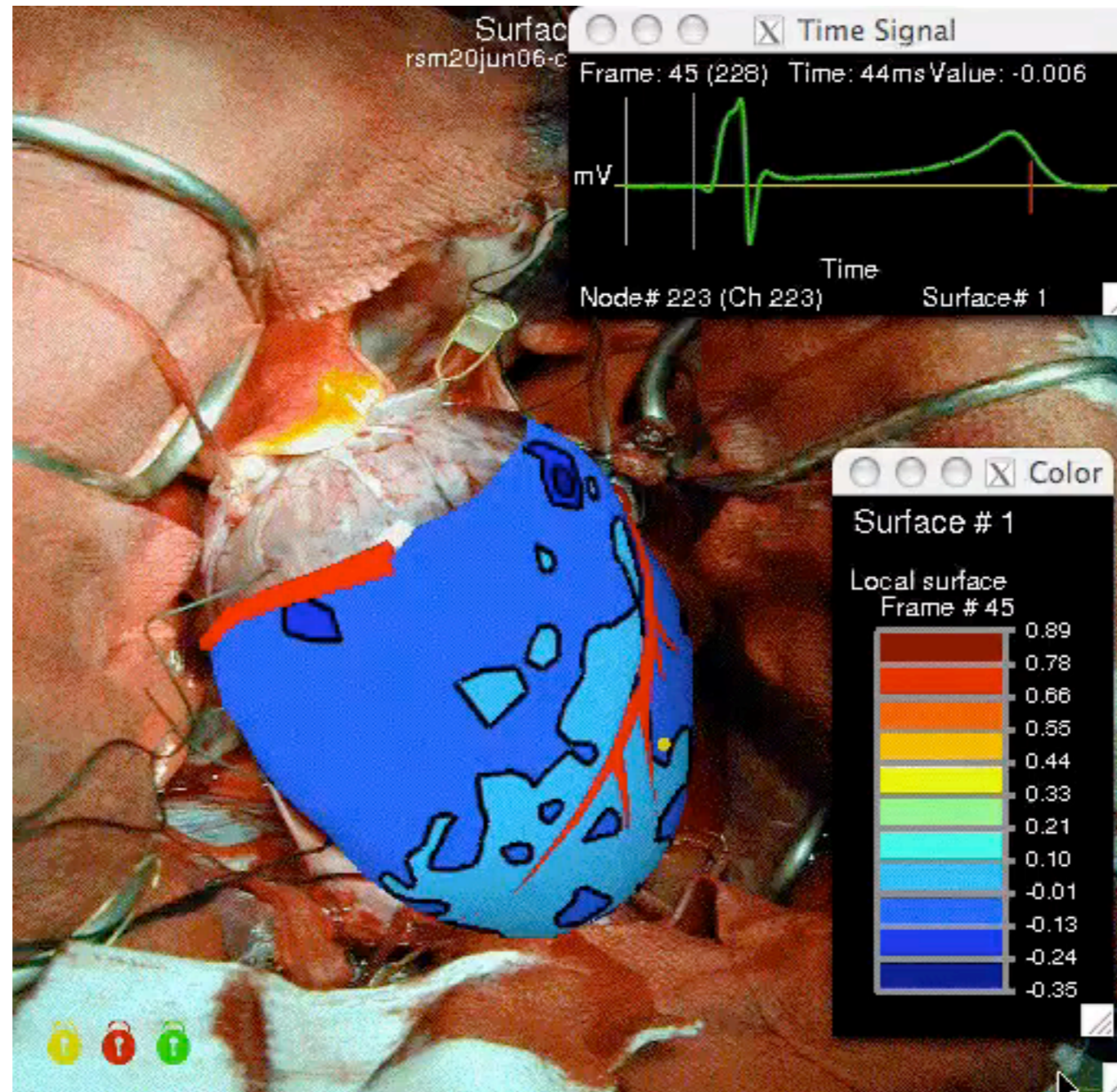


Registration
Segmentation
Conductivities
Meshing

Surface Accuracy
Eq. Source Model
Recording Noise

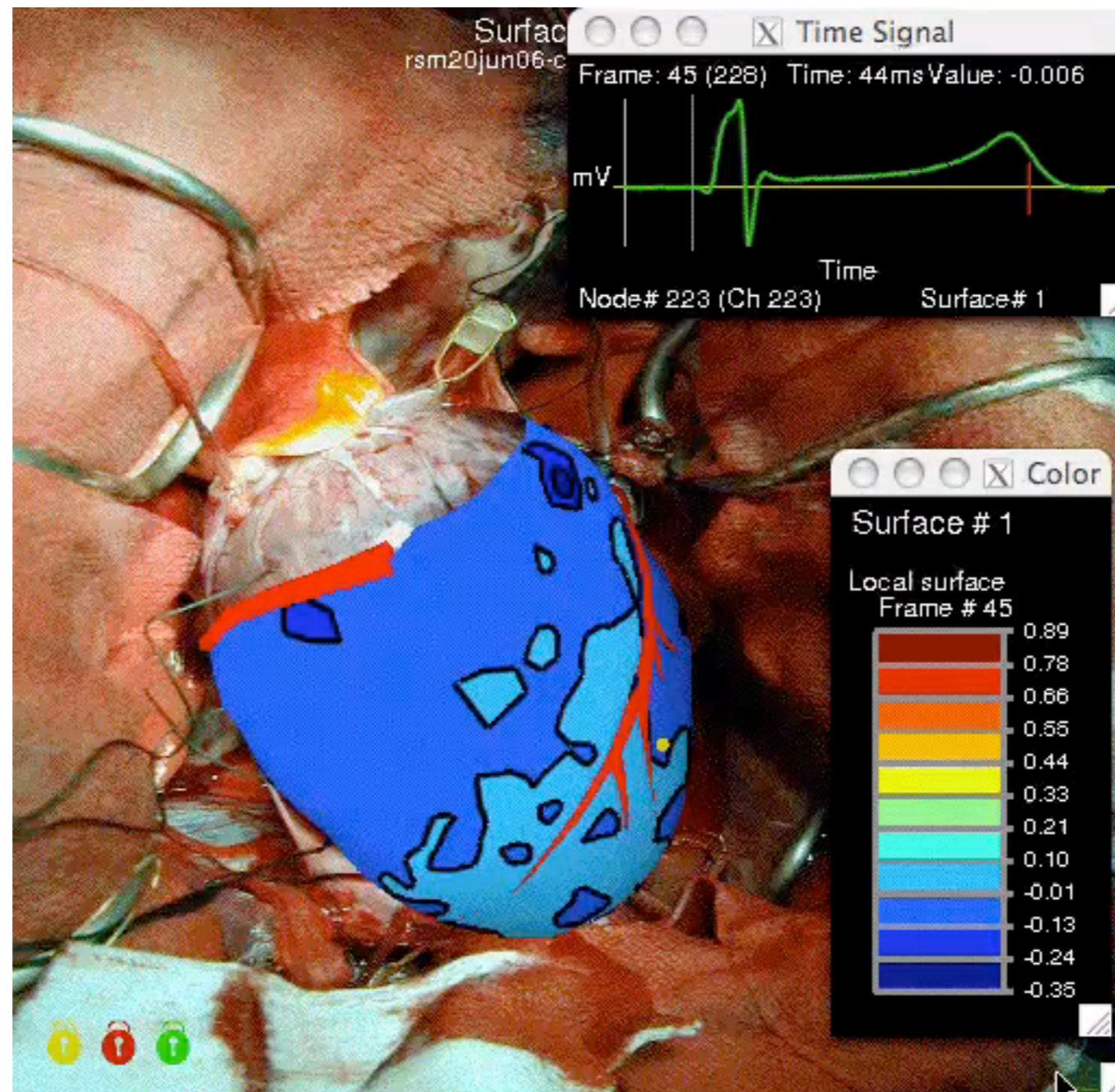
Source Sampling

Source Recording



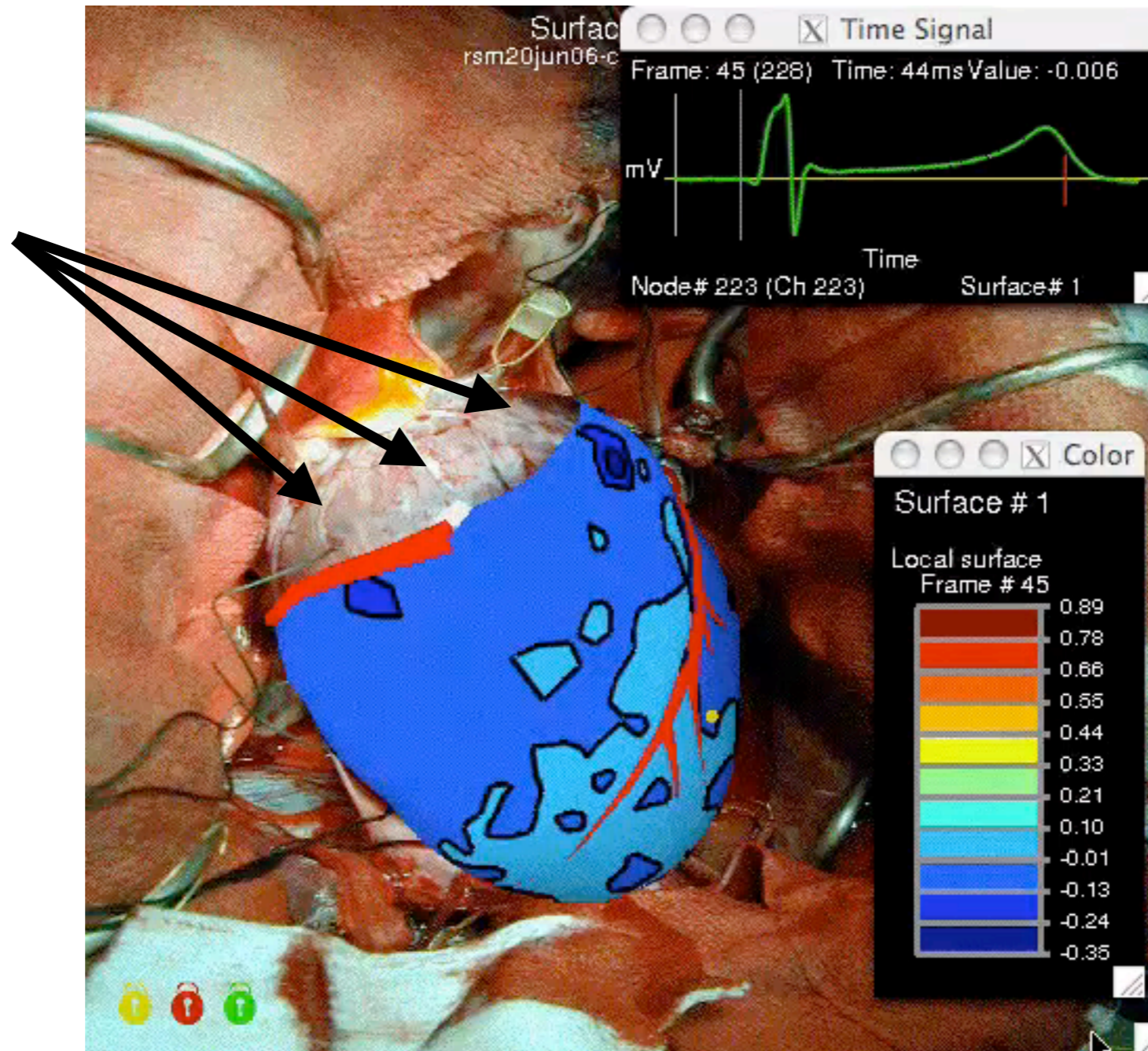
Epicardial Sock

Source Recording



Epicardial Sock (Ventricle Only)

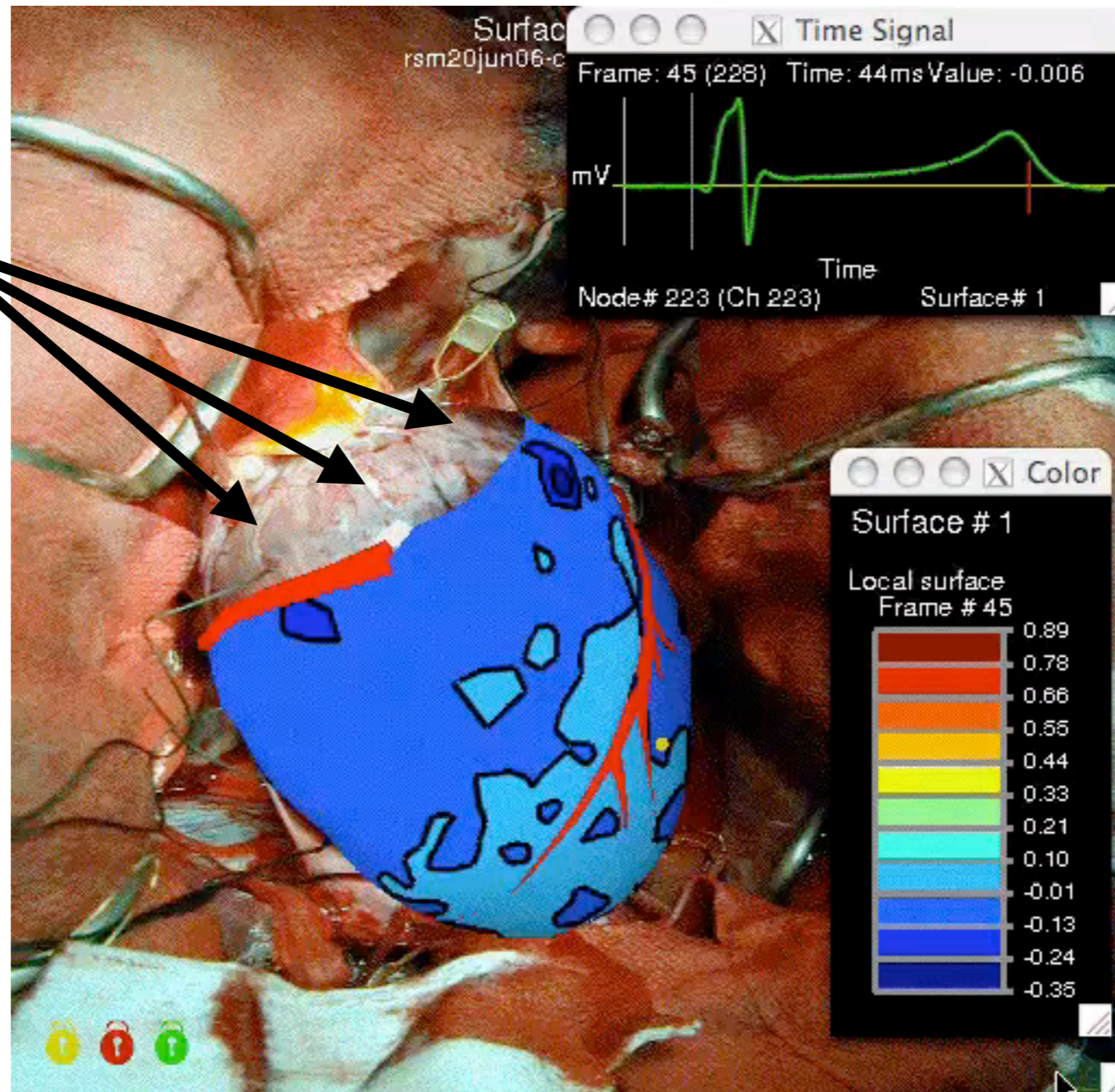
Source Recording



Epicardial Sock
(Ventricle Only)

Source Recording

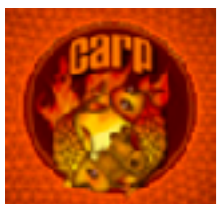
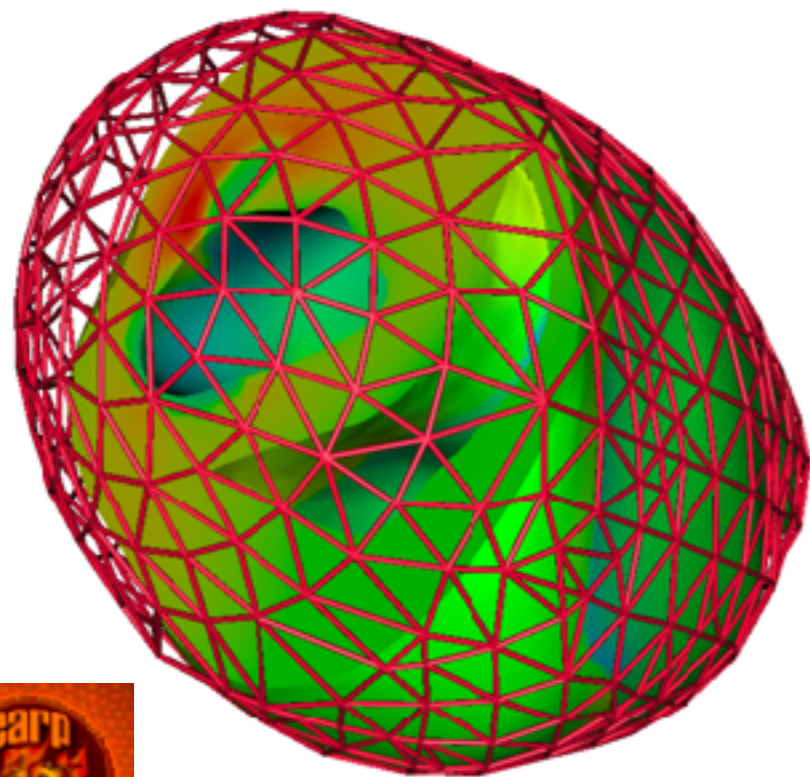
Missing Sources?



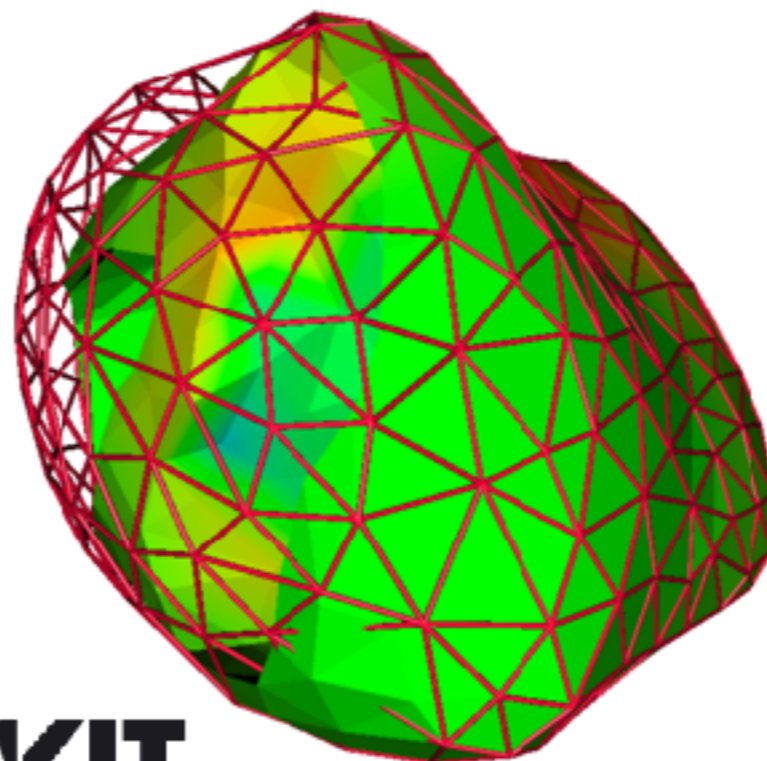
Epicardial Sock
(Ventricle Only)

Test sampling strategies of the atrial region to reduce error in forward simulation

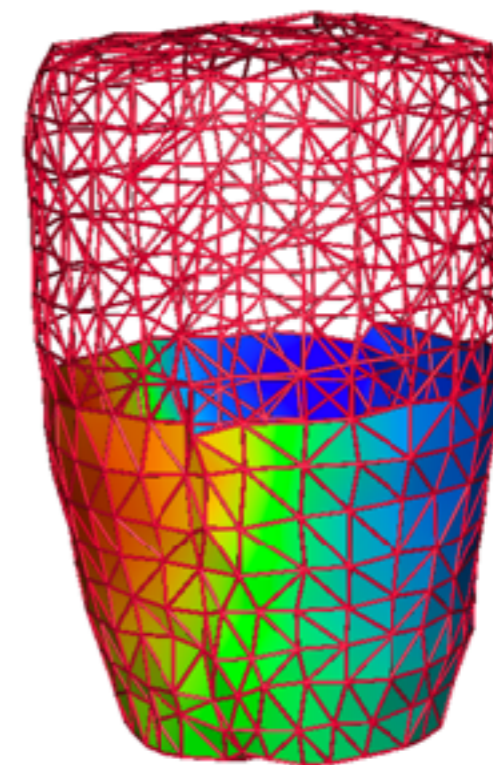
Cardiac Sources



CARP

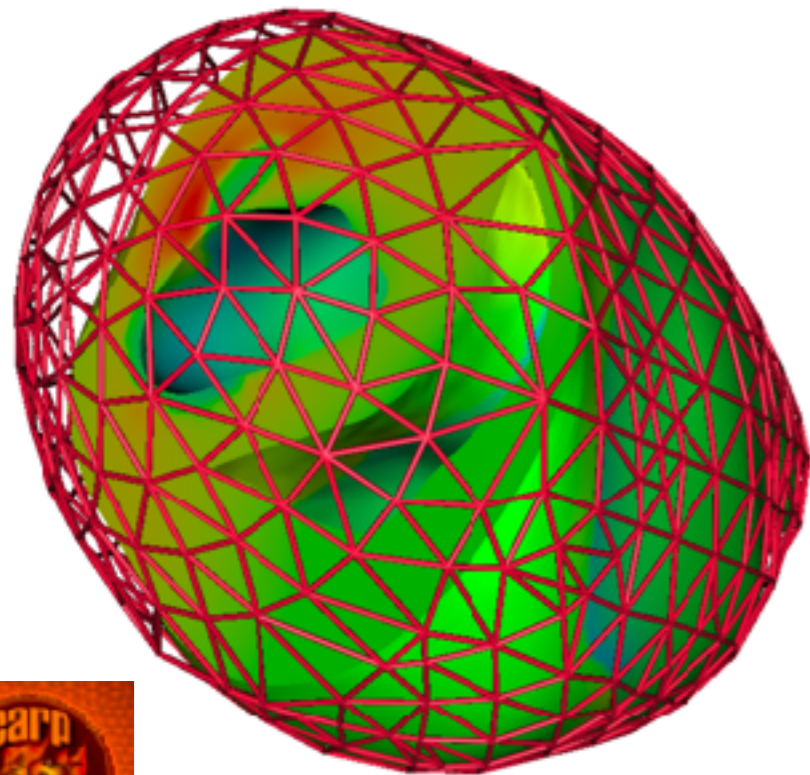


KIT

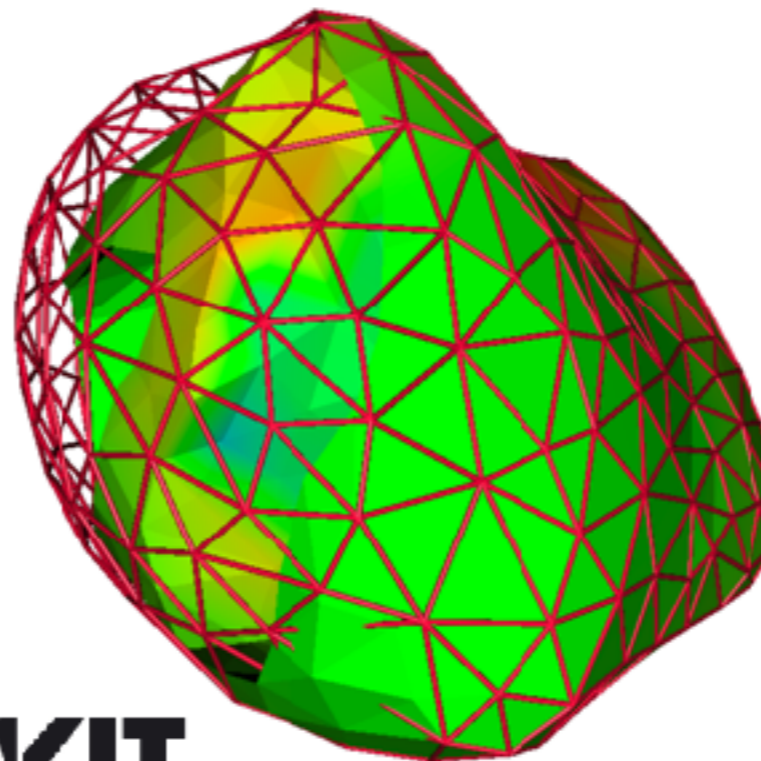


CAGE

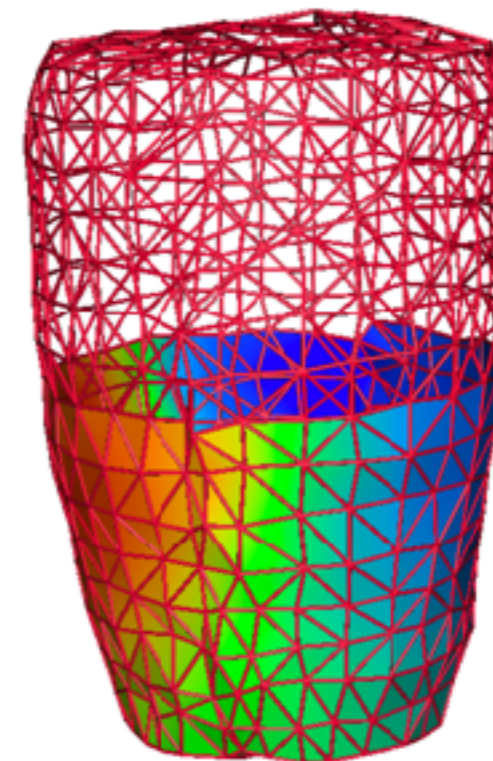
Cardiac Sources



CARRP



KIT

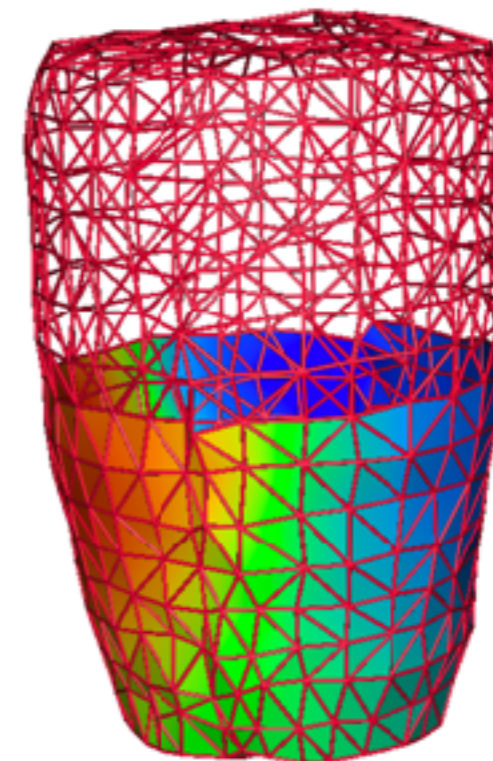
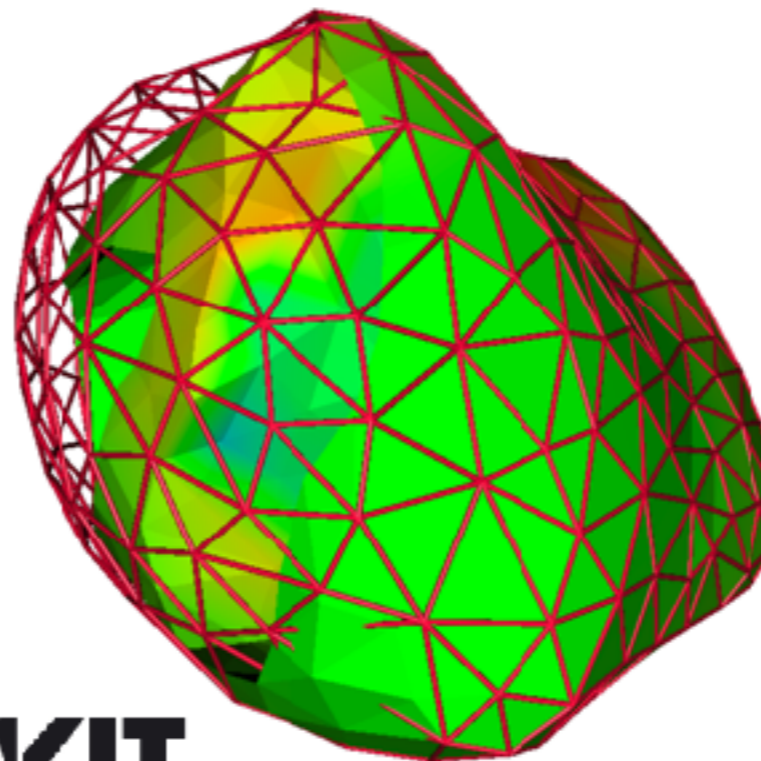
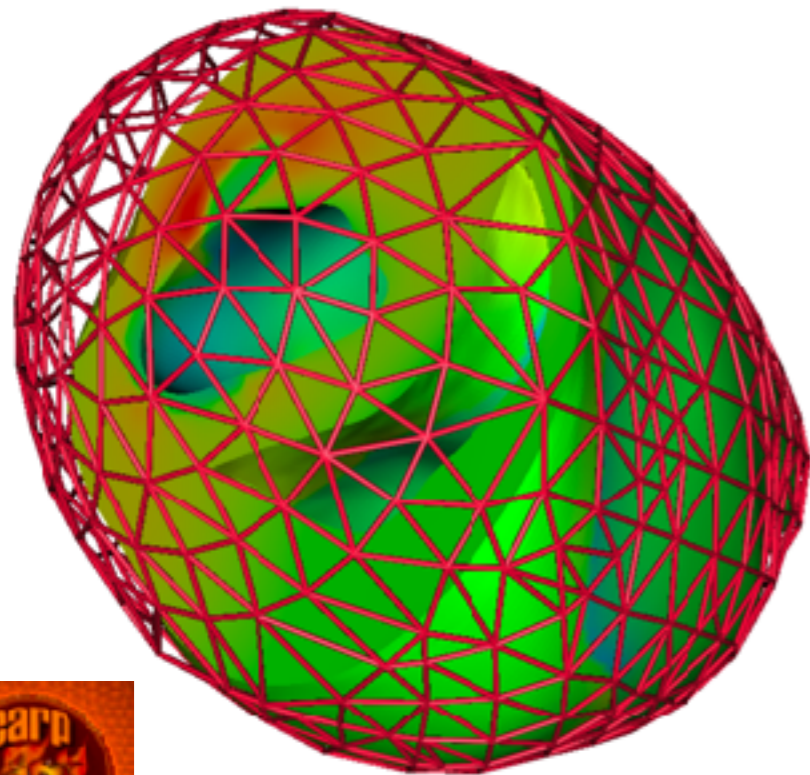


CAGE

4 Simulation Activation Patterns

sinus/septum stimulation
left ventricle stimulation
right ventricle stimulation
apex stimulation

Cardiac Sources



CARP



KIT

CAGE

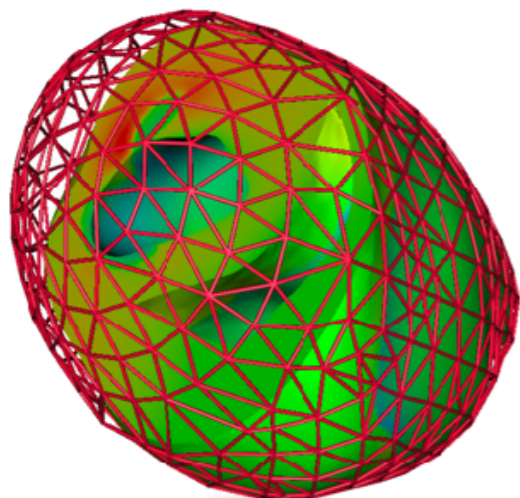
4 Simulation Activation Patterns

- sinus/septum stimulation
- left ventricle stimulation
- right ventricle stimulation
- apex stimulation

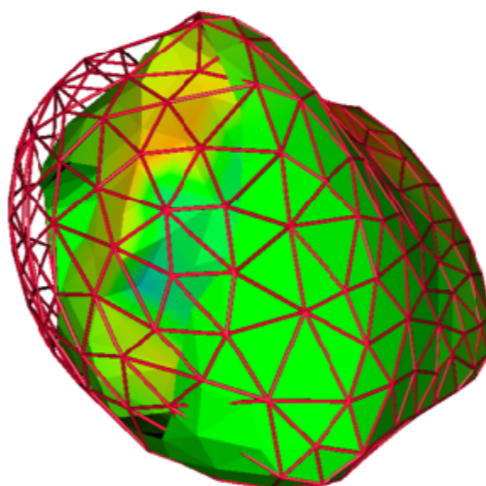
Recorded Potentials

Ground Truth

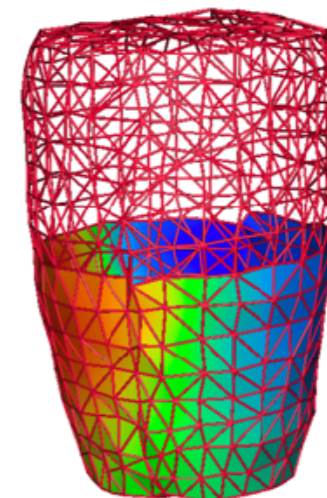
CARP



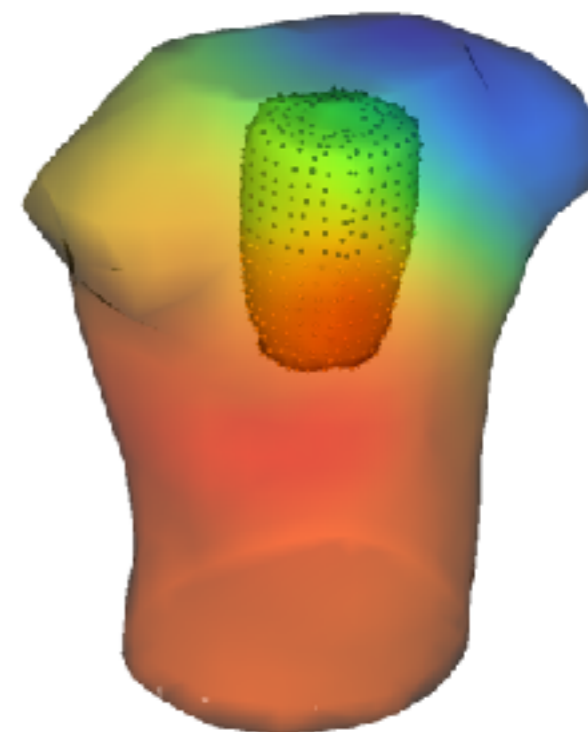
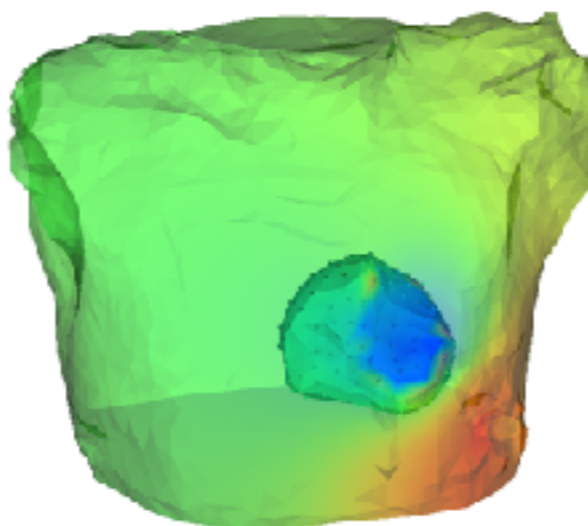
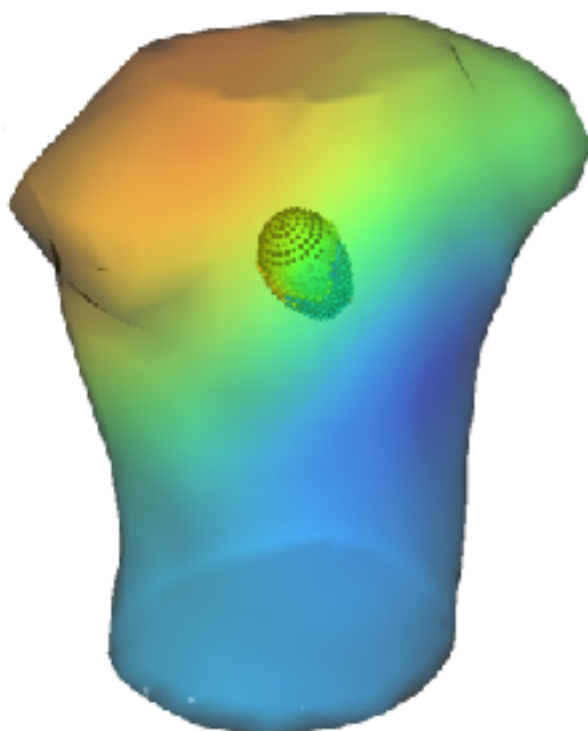
KIT



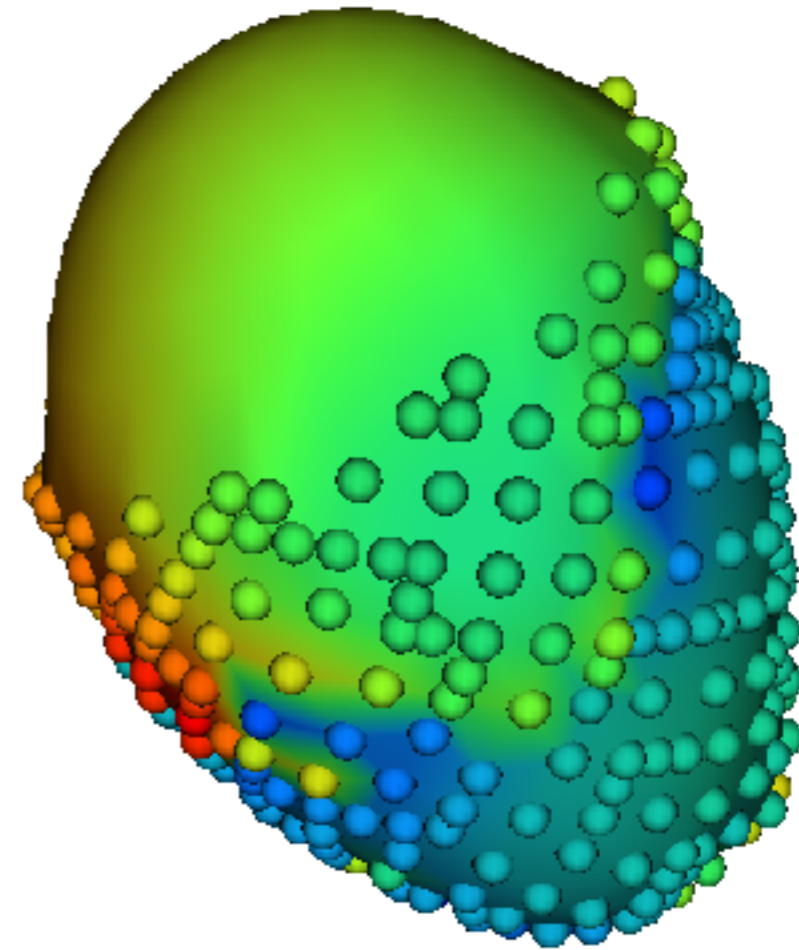
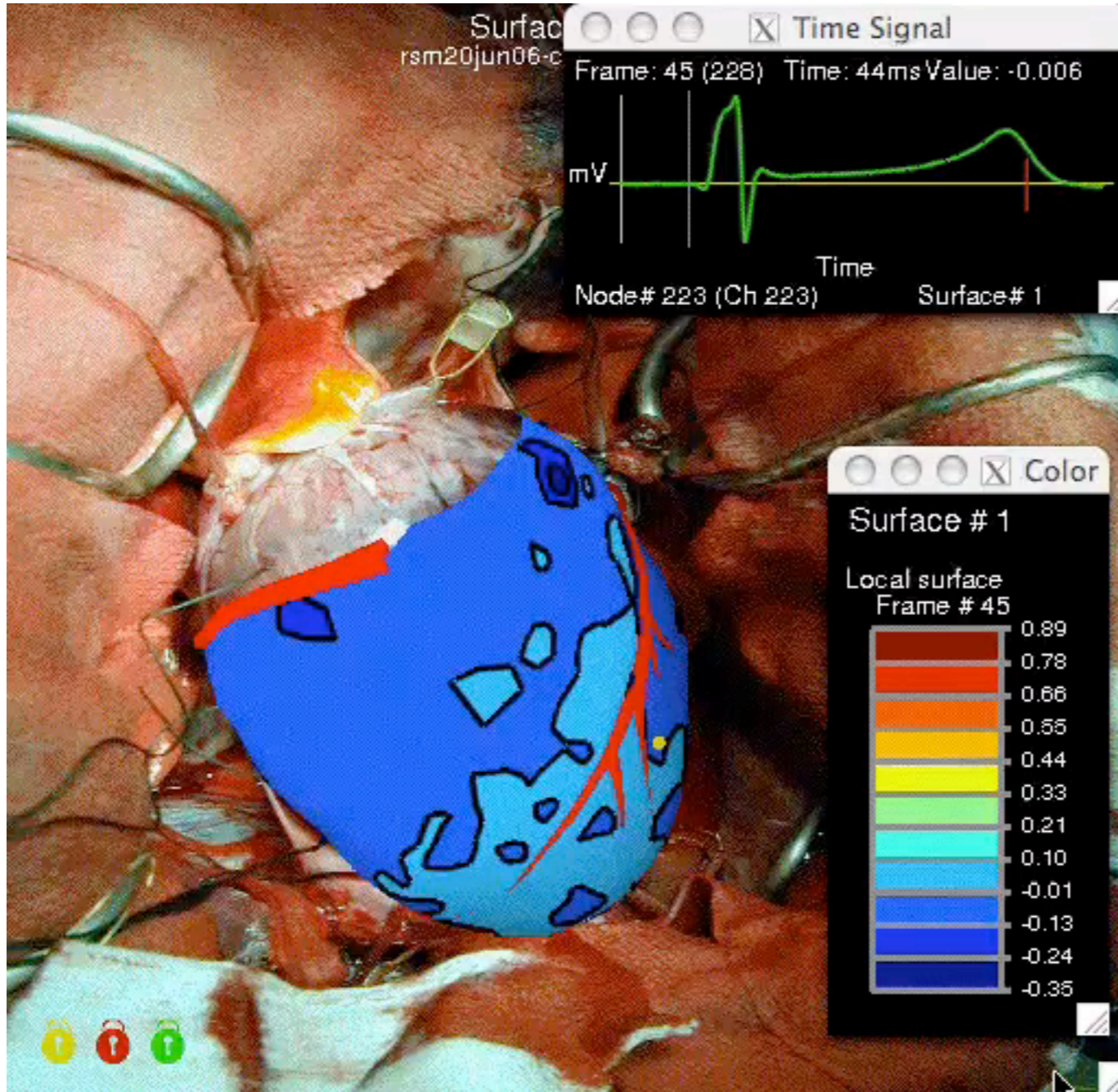
CAGE



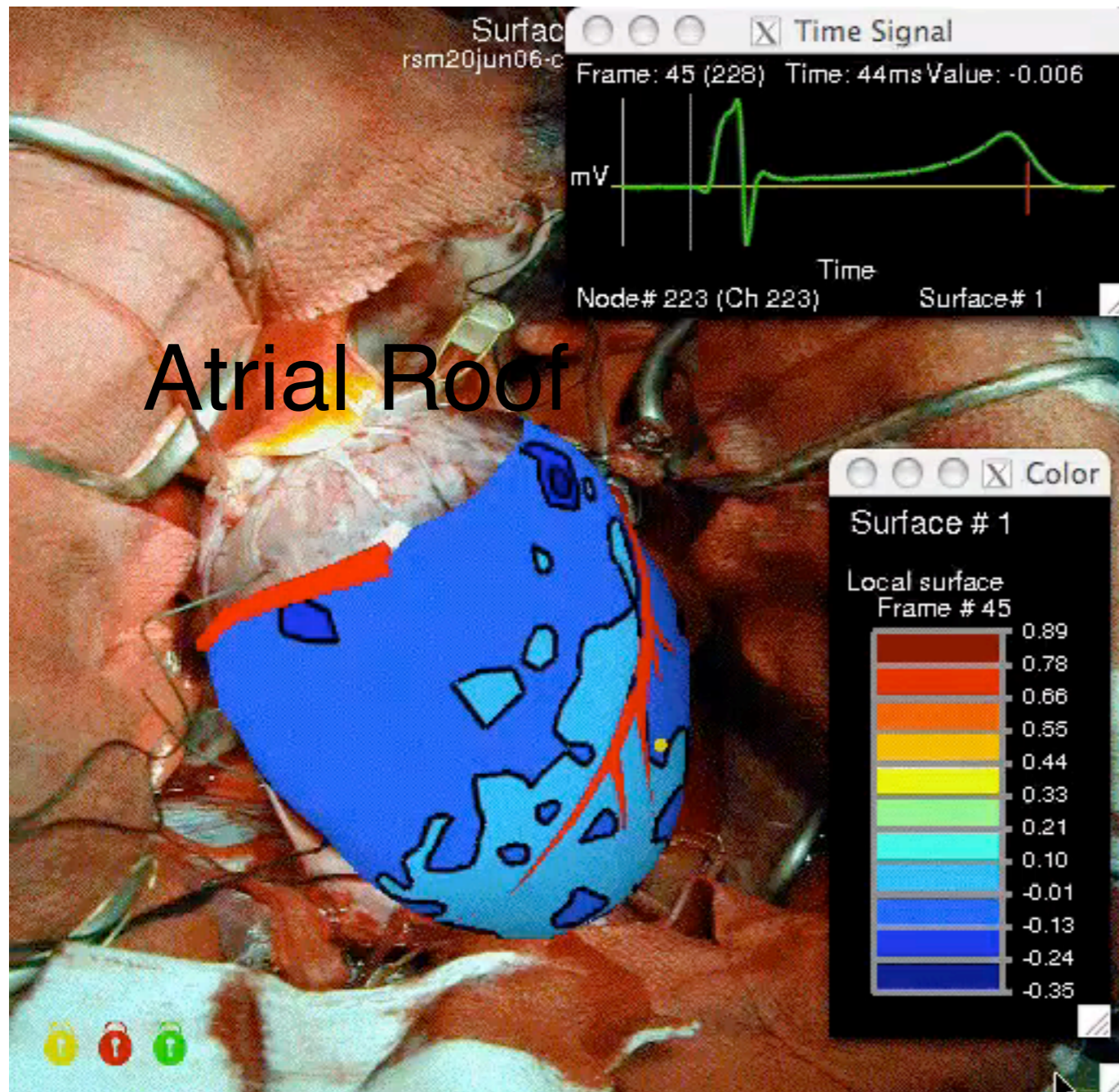
FEM
Simulation



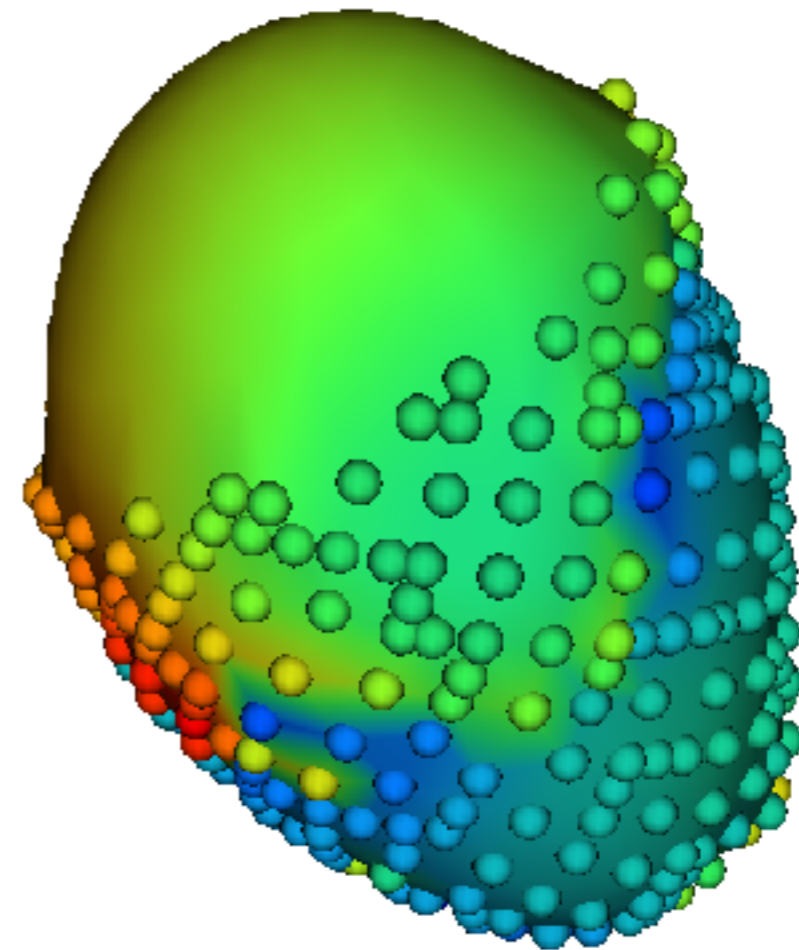
Atrial Sampling



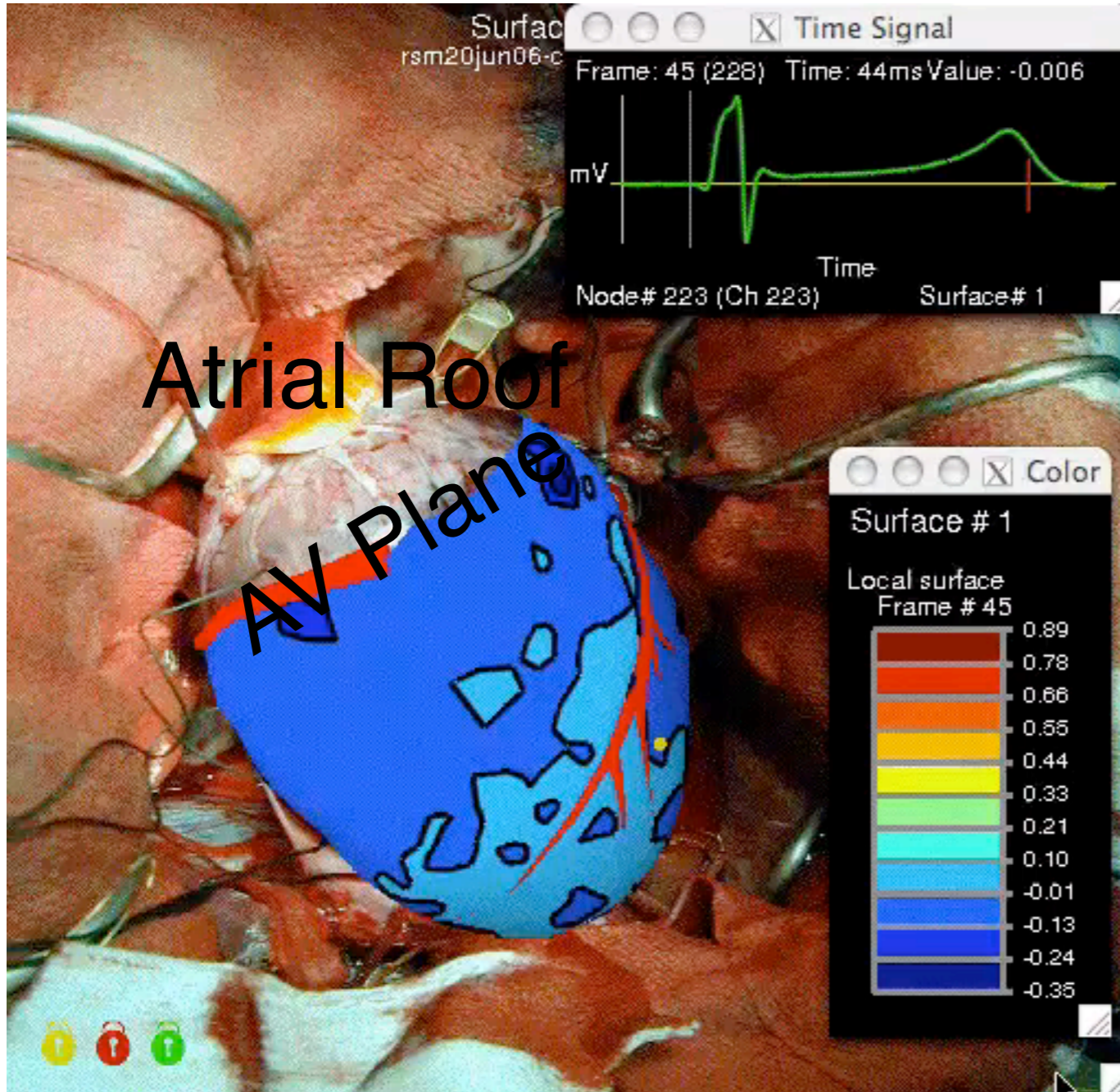
Atrial Sampling



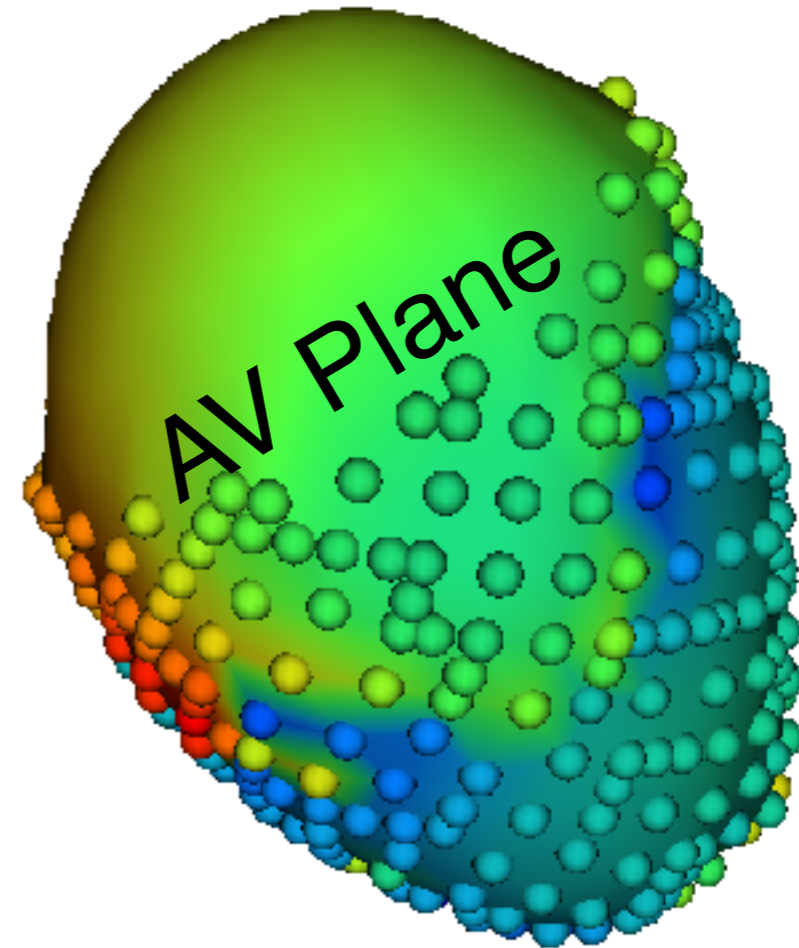
Atrial Roof



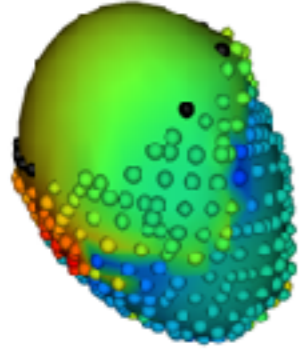
Atrial Sampling



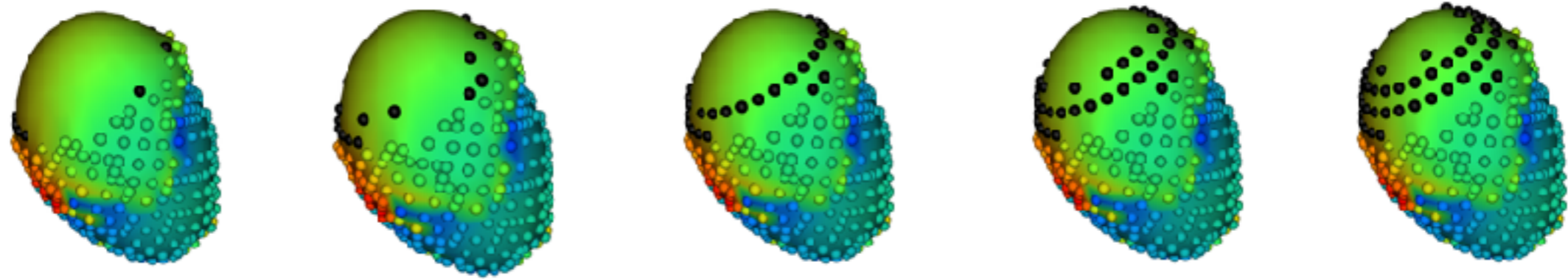
Atrial Roof



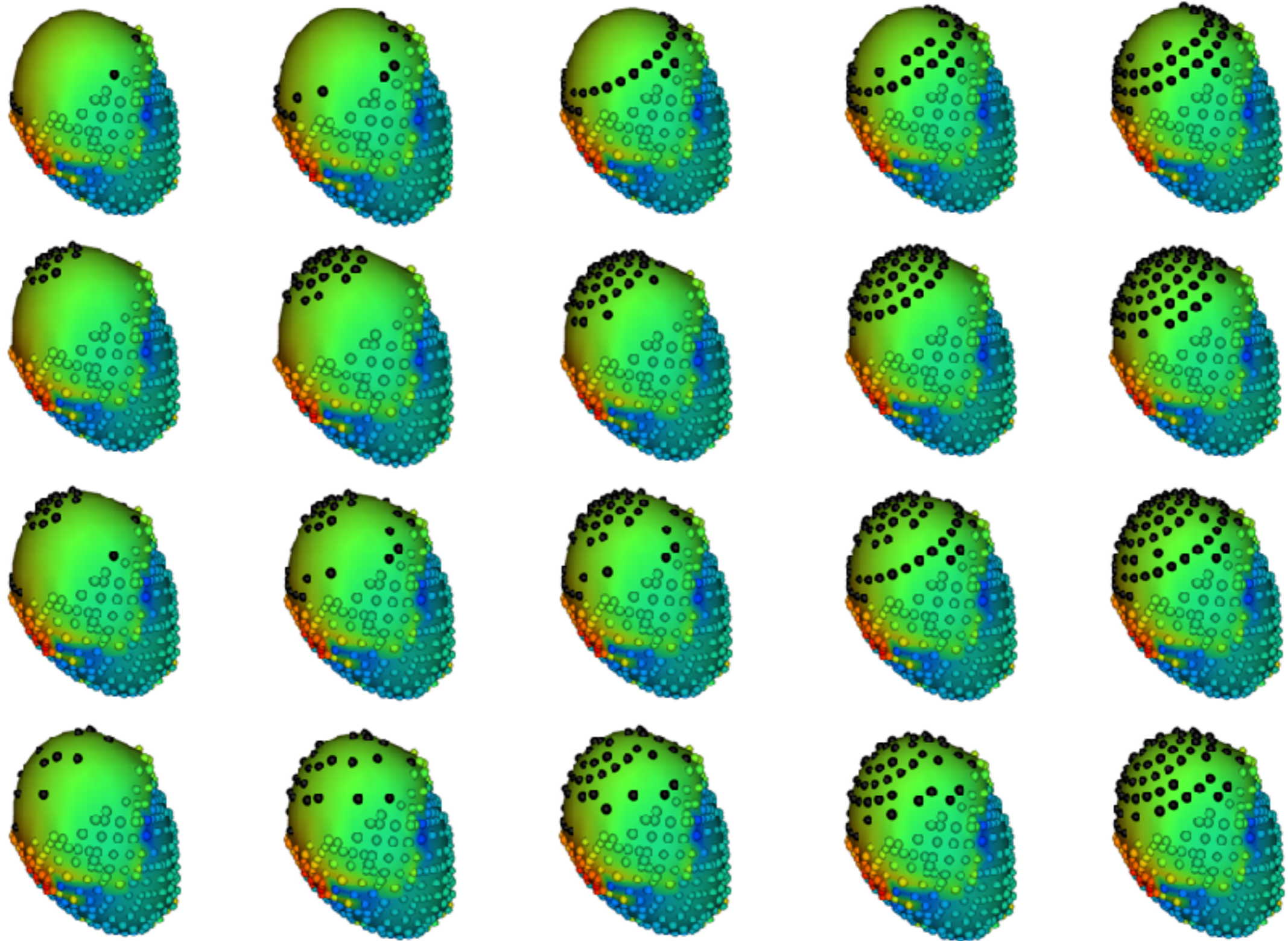
Varied Sampling



Varied Sampling



Varied Sampling

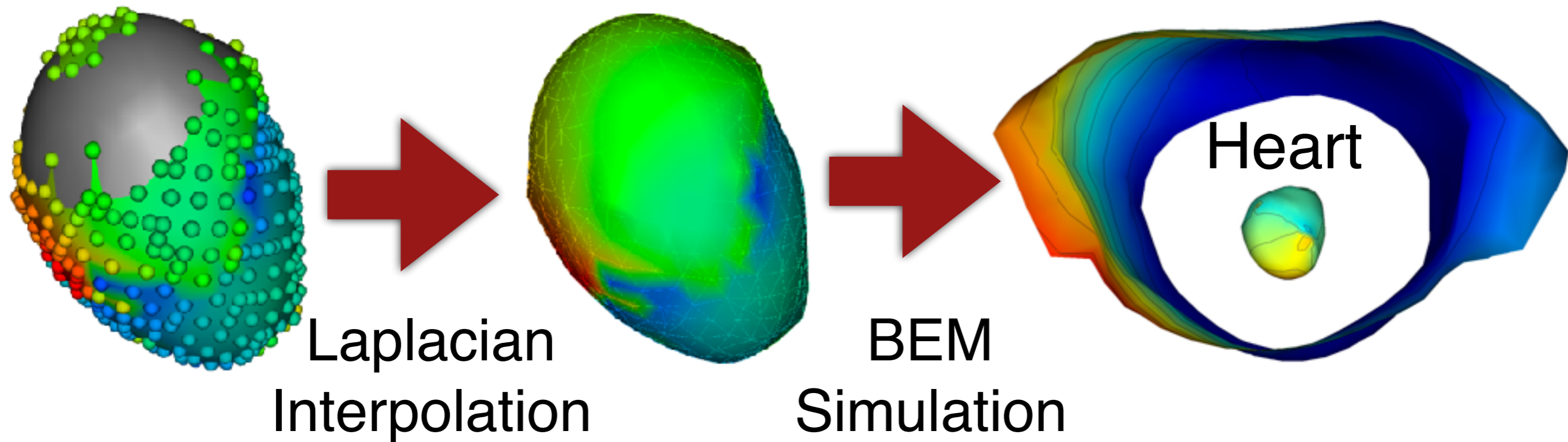


ECG Forward Simulation

Sampled Sources

Interpolated Sources

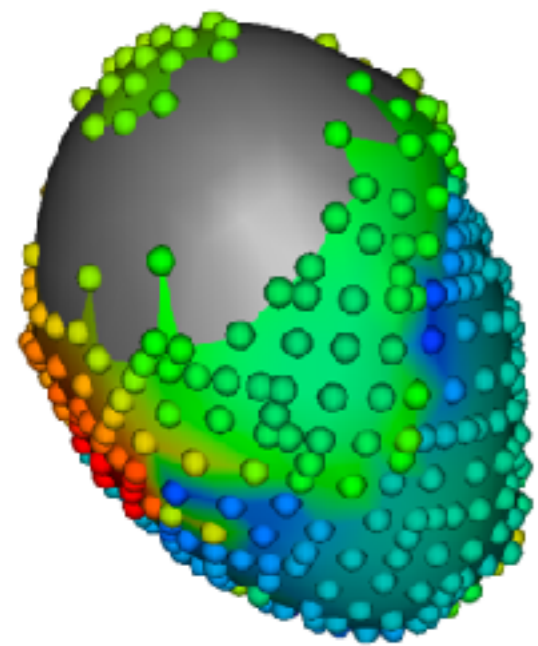
Torso



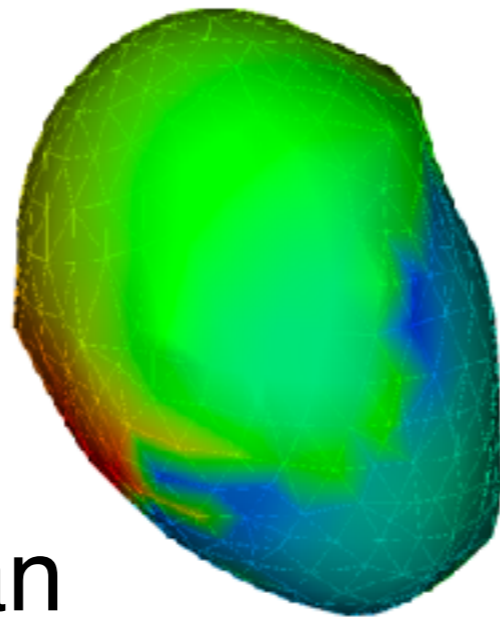
ECG Forward Simulation

Sampled
Sources

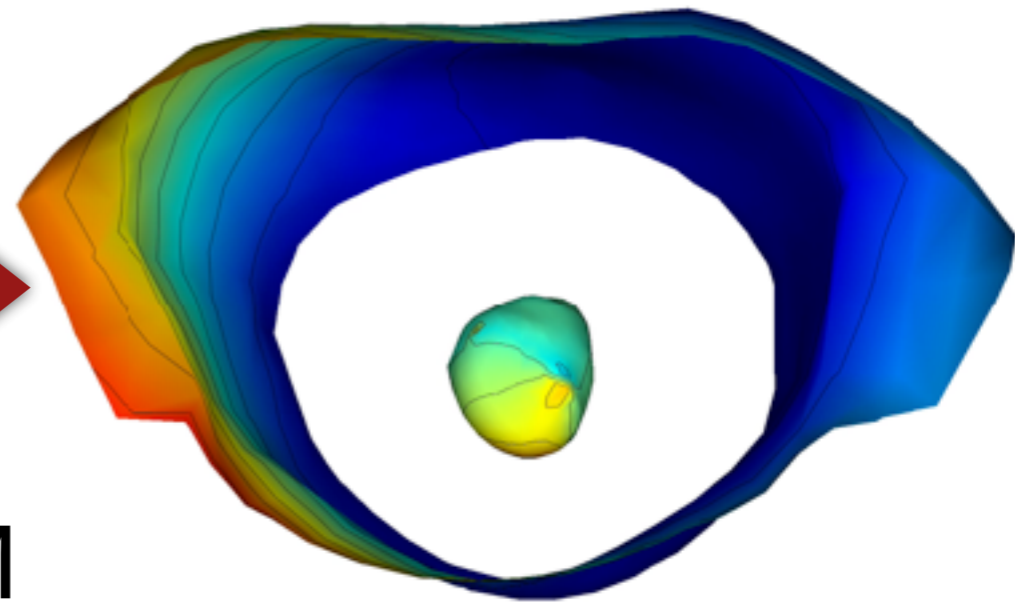
Interpolated
Sources



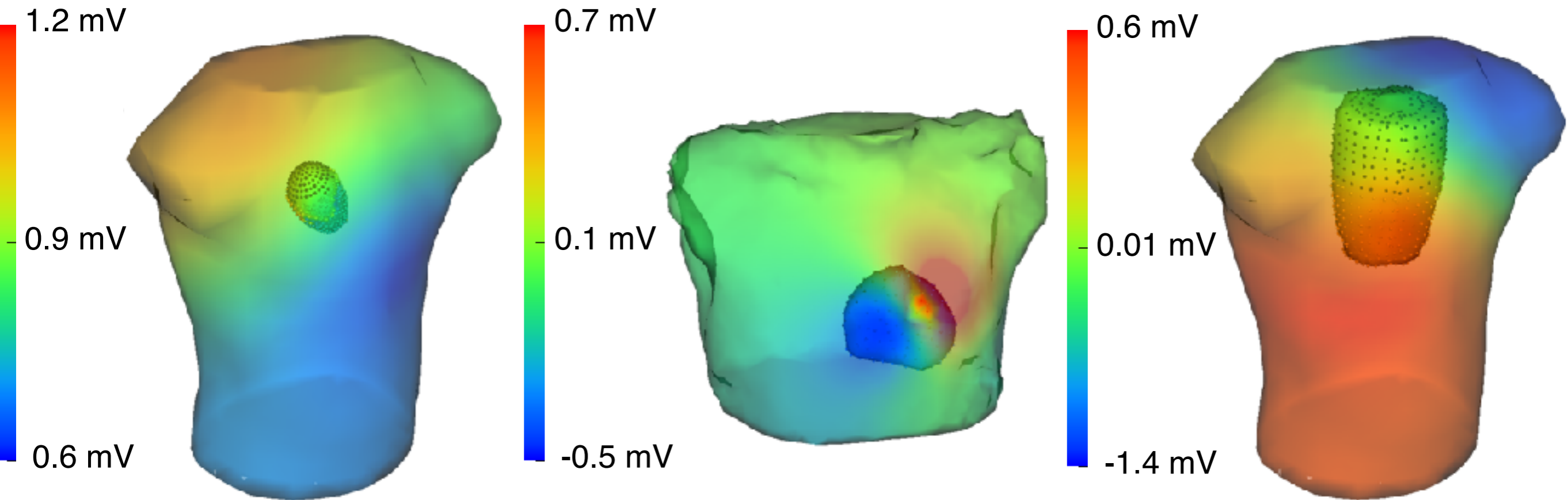
Laplacian
Interpolation



BEM
Simulation



Predicted solution



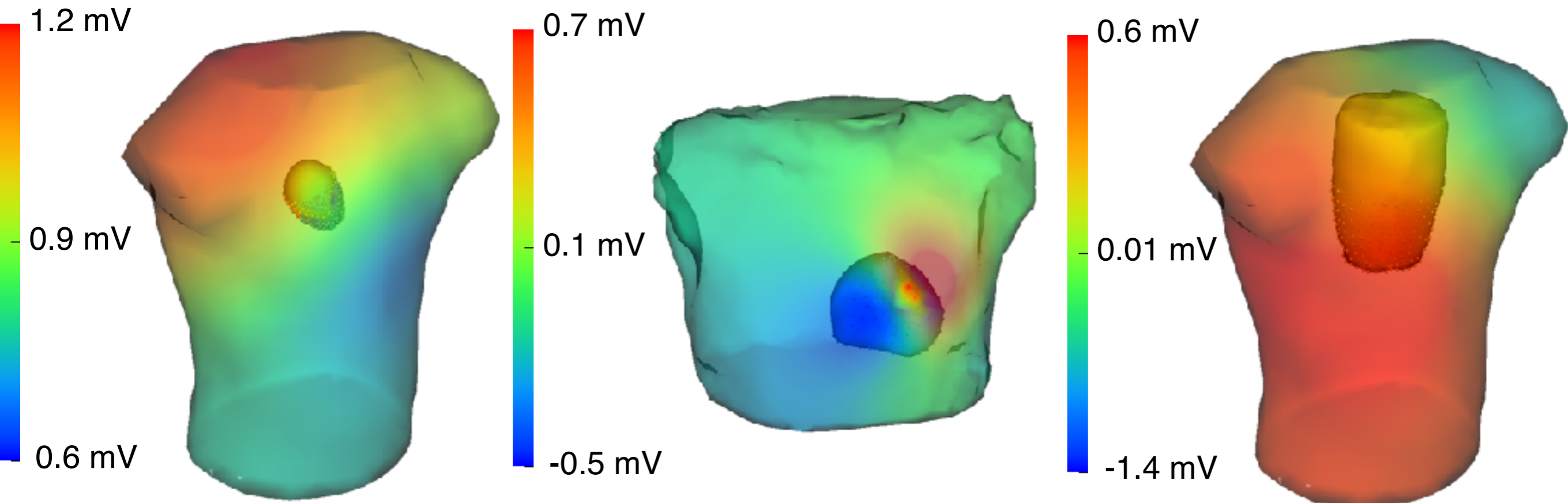
CARP

KIT

CAGE

Ground Truth

Predicted solution



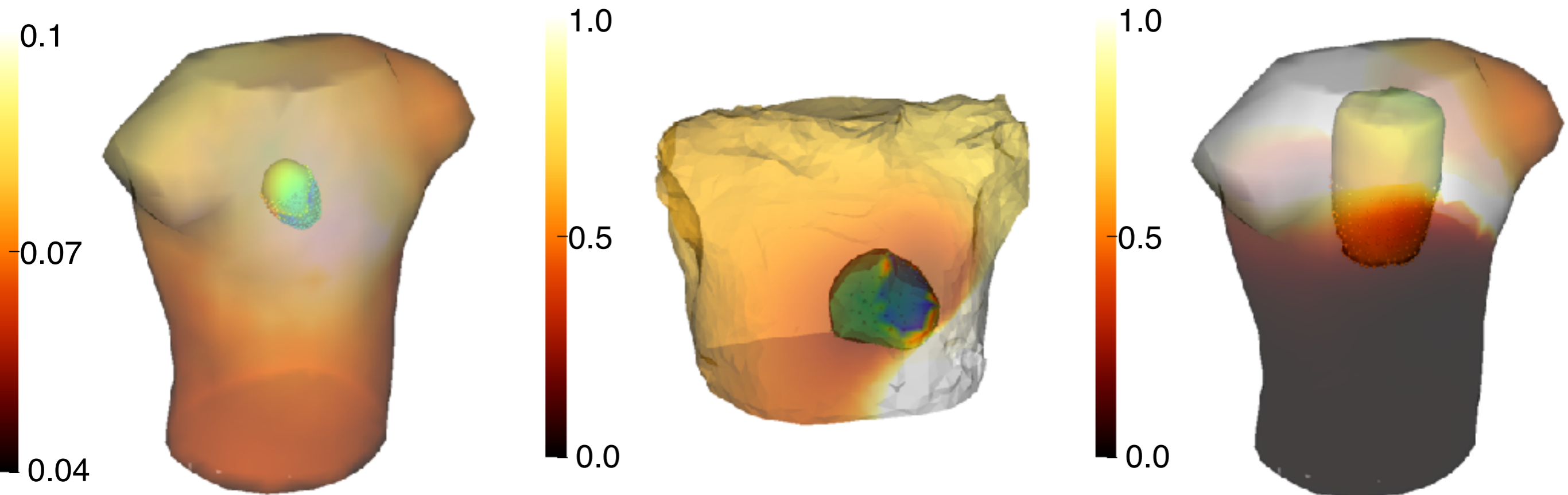
CARP

KIT

CAGE

Sock Only

Relative Difference



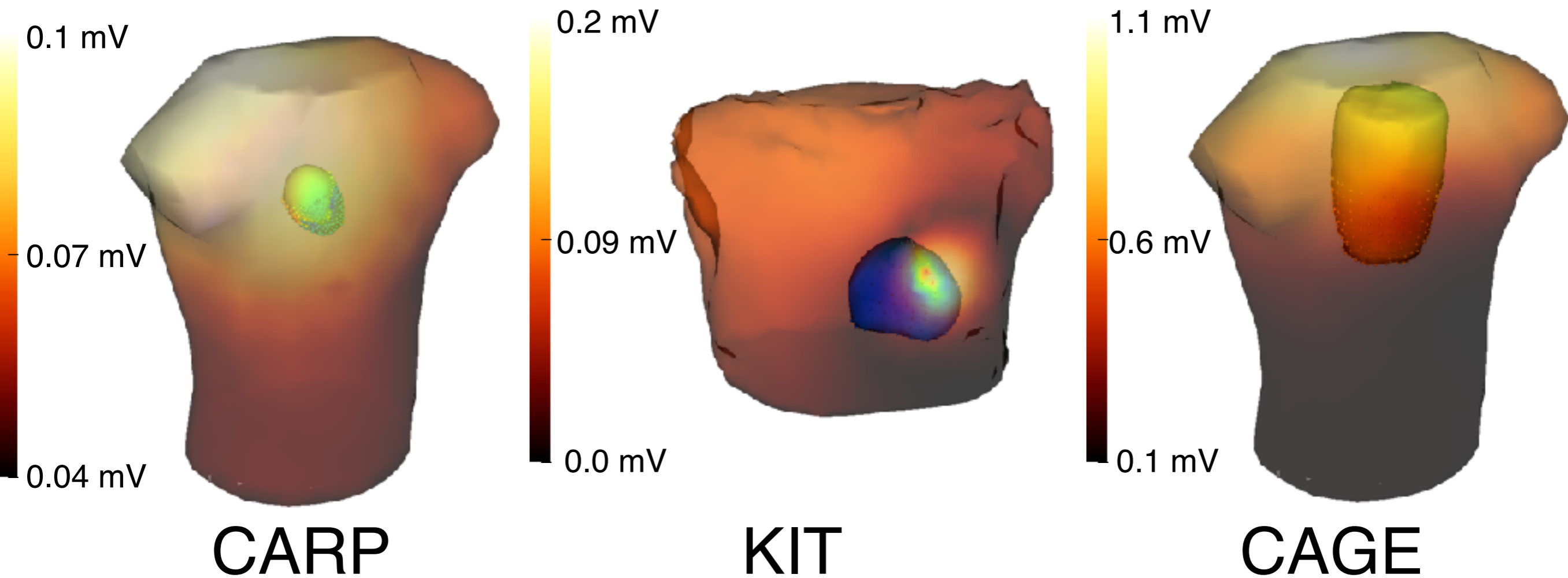
CARP

KIT

CAGE

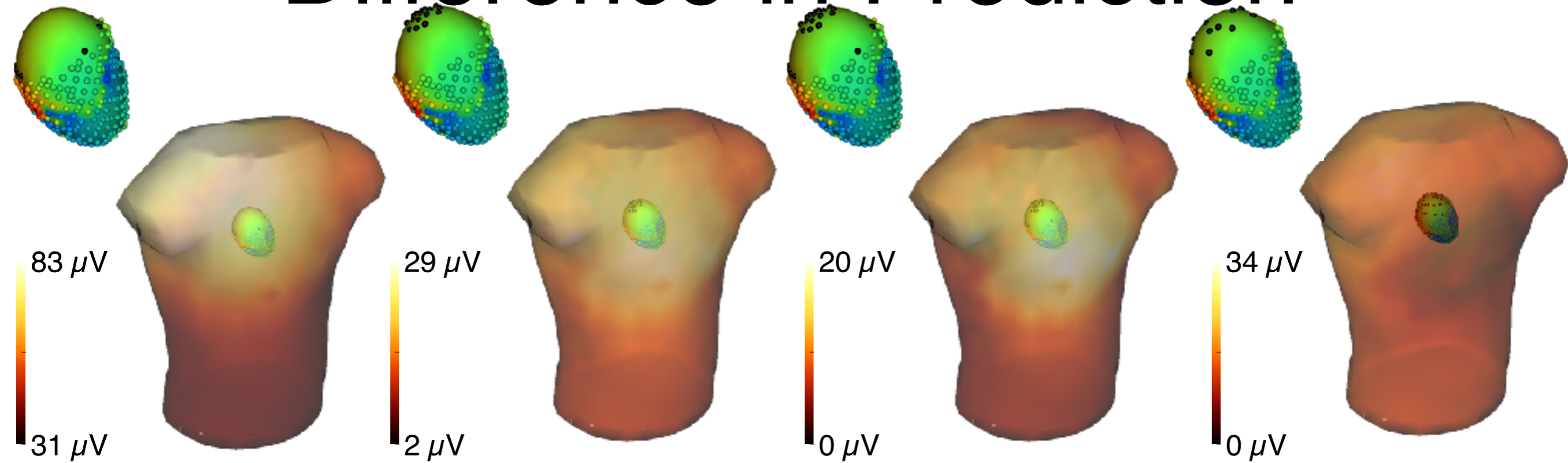
Sock Only

Absolute Difference

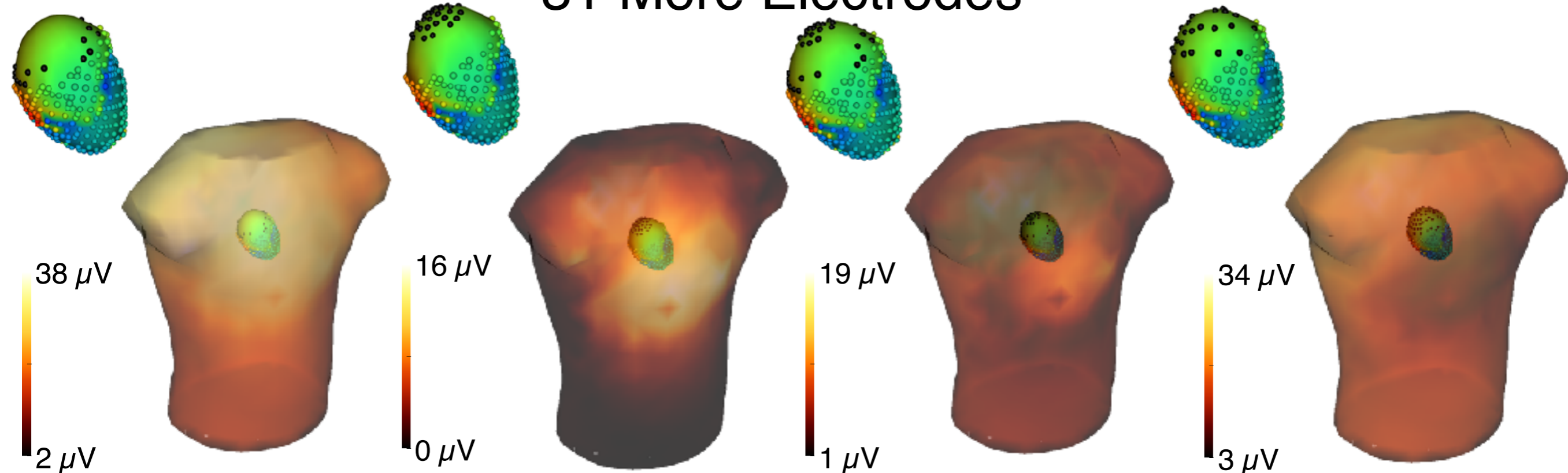


Sock Only

Difference in Prediction



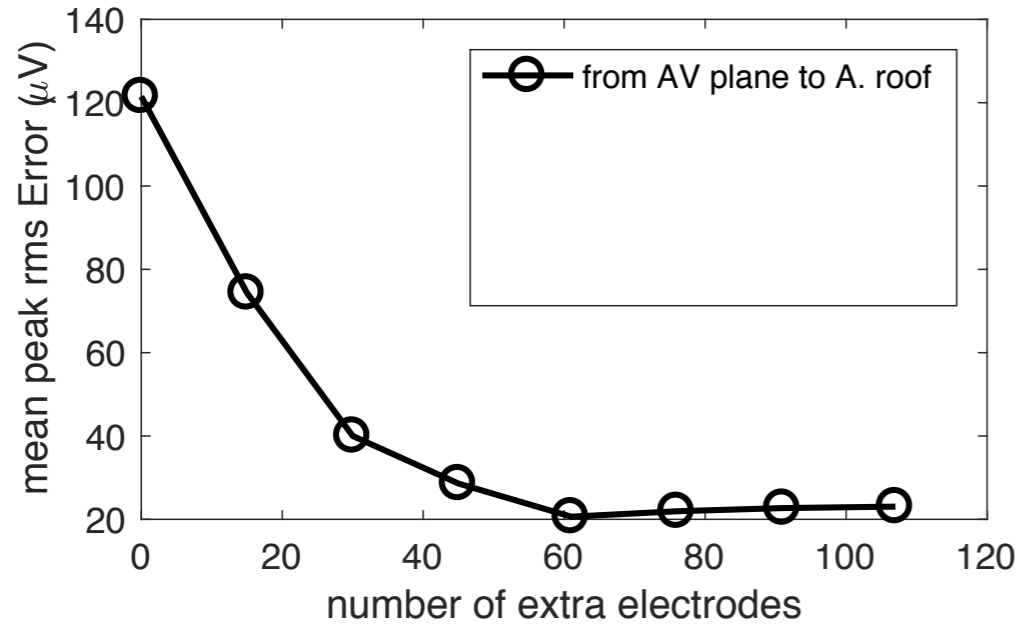
31 More Electrodes



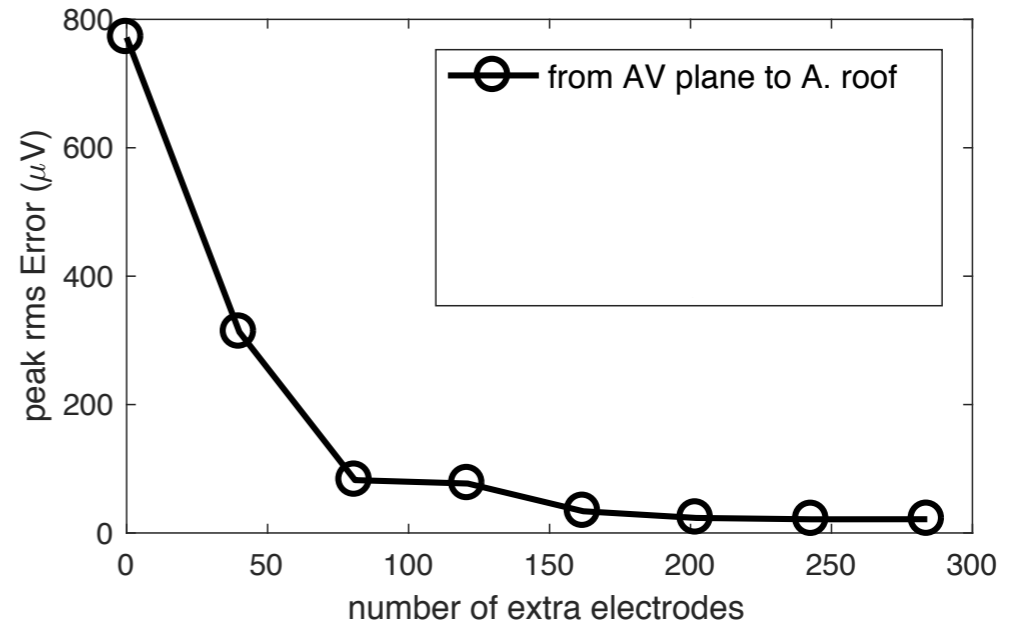
46 More Electrodes

Comparing Sampling

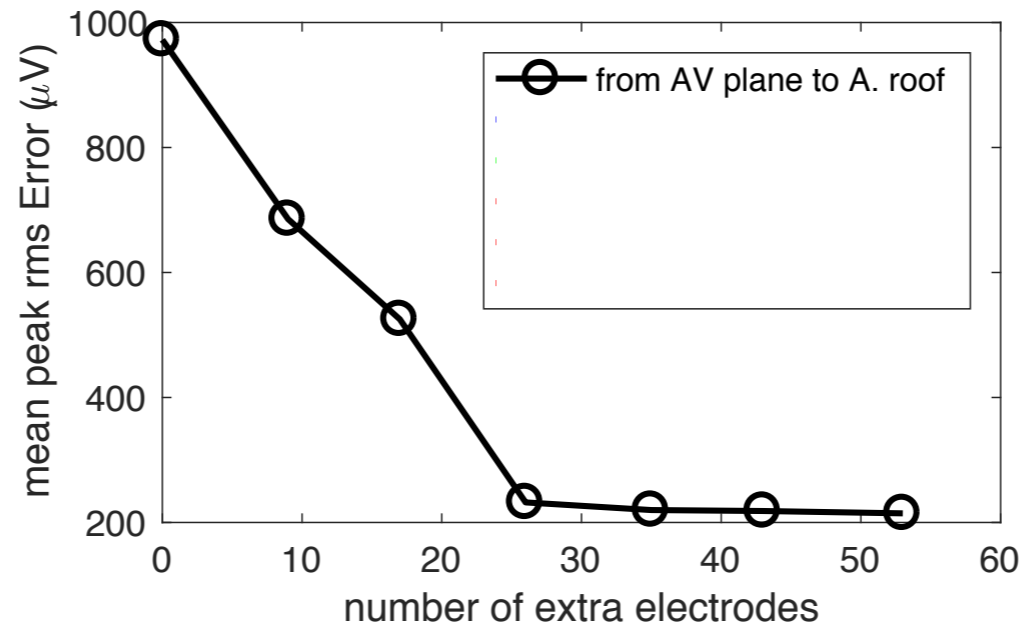
CARP



CAGE

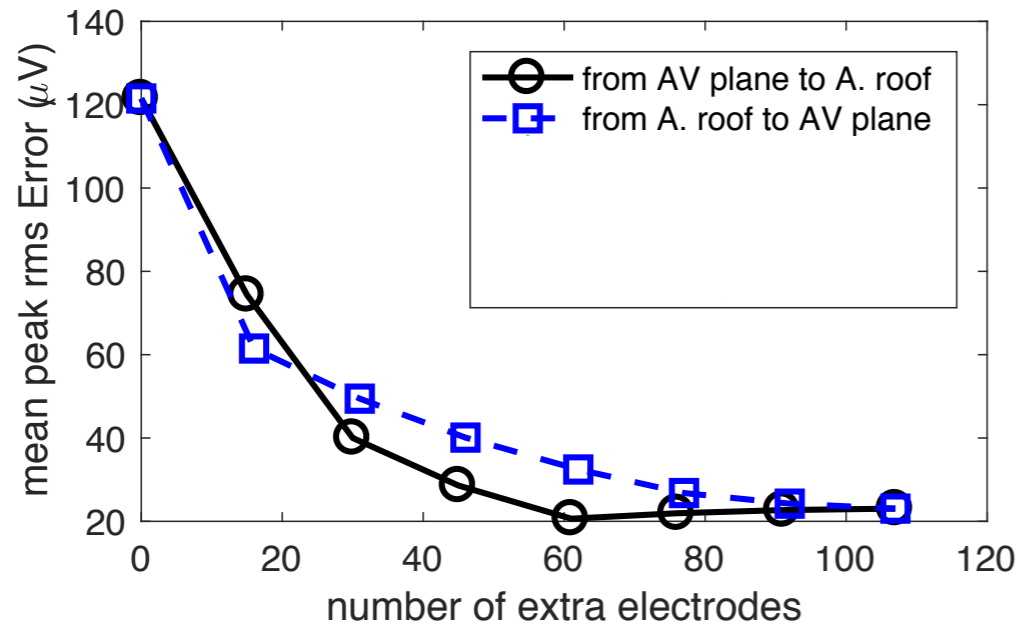


KIT

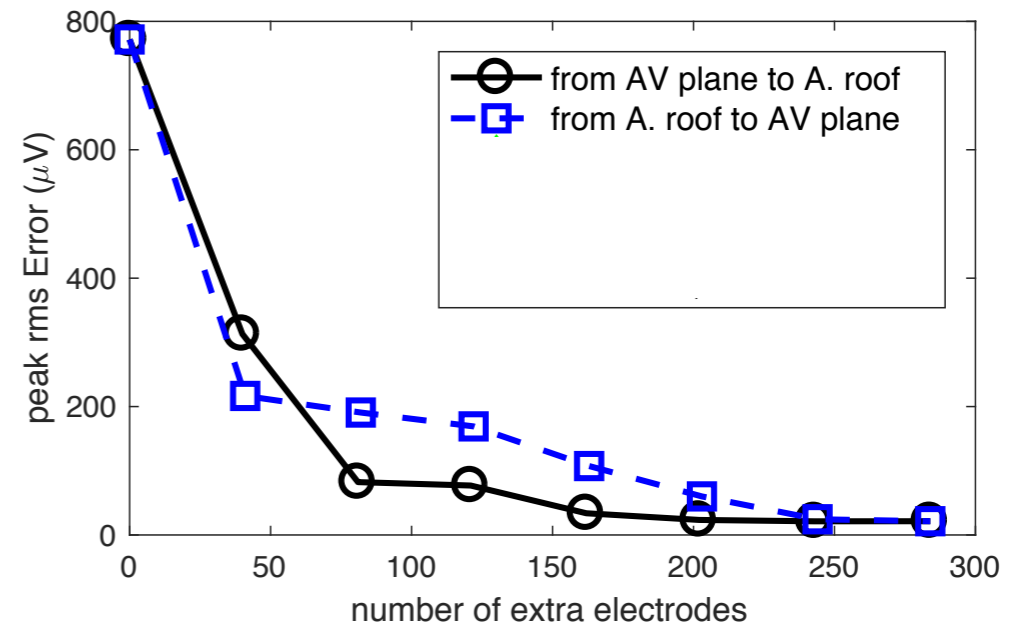


Comparing Sampling

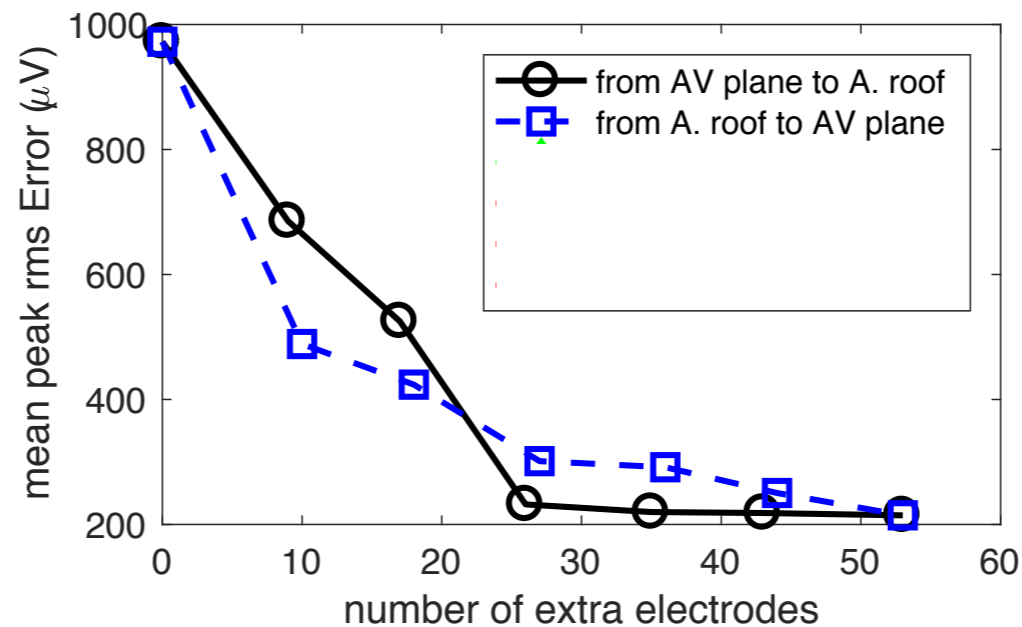
CARP



CAGE

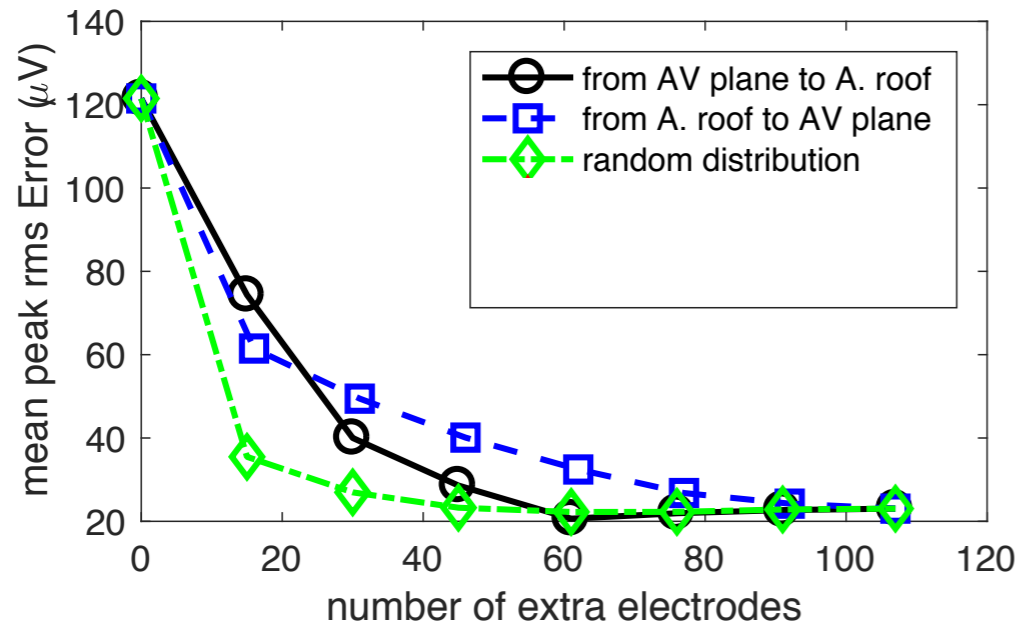


KIT

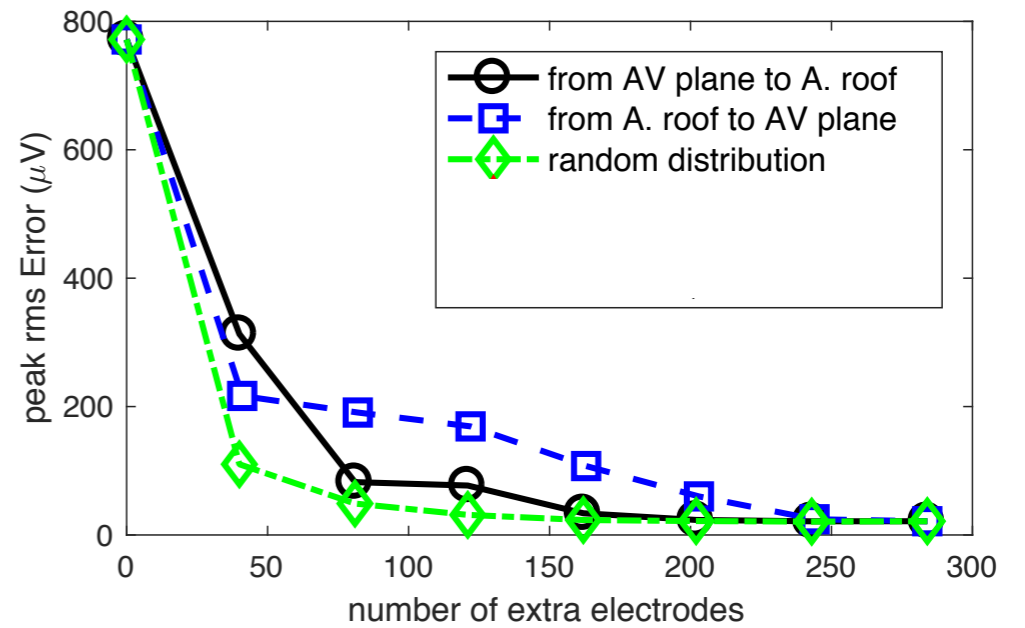


Comparing Sampling

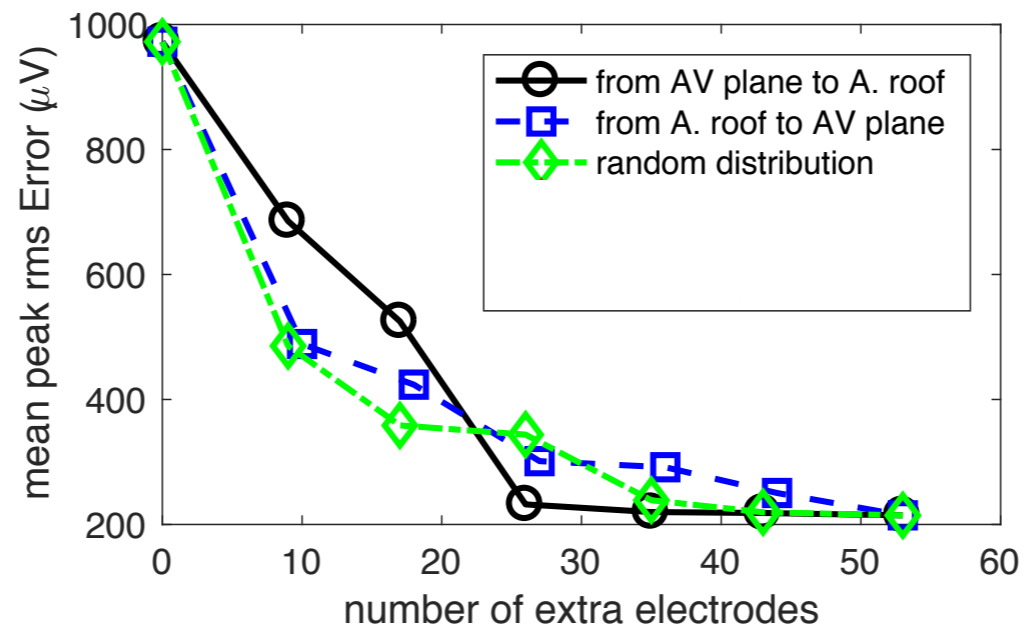
CARP



CAGE

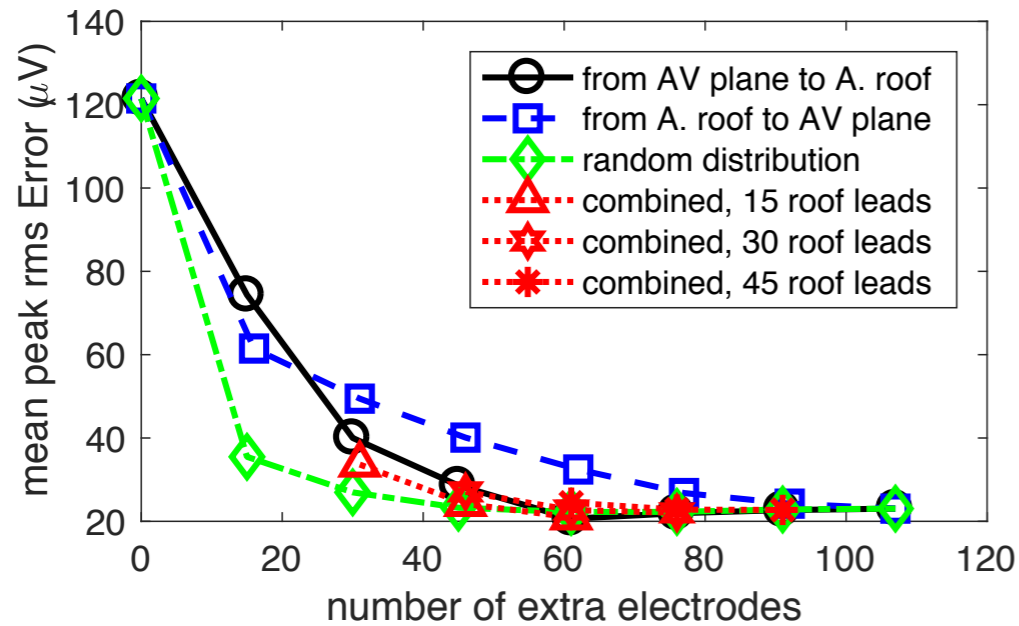


KIT

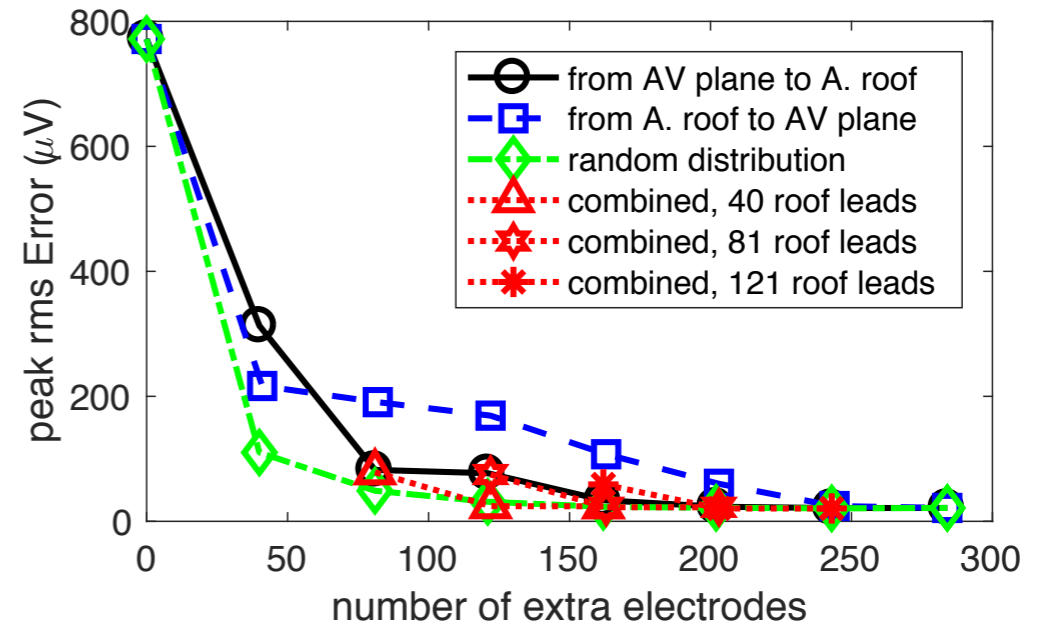


Comparing Sampling

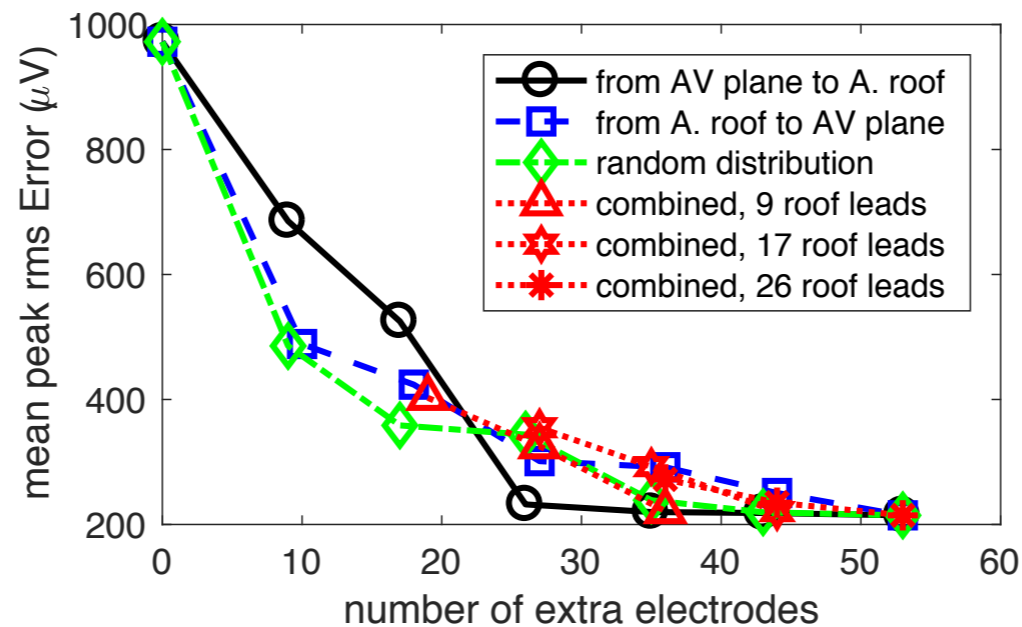
CARP



CAGE



KIT

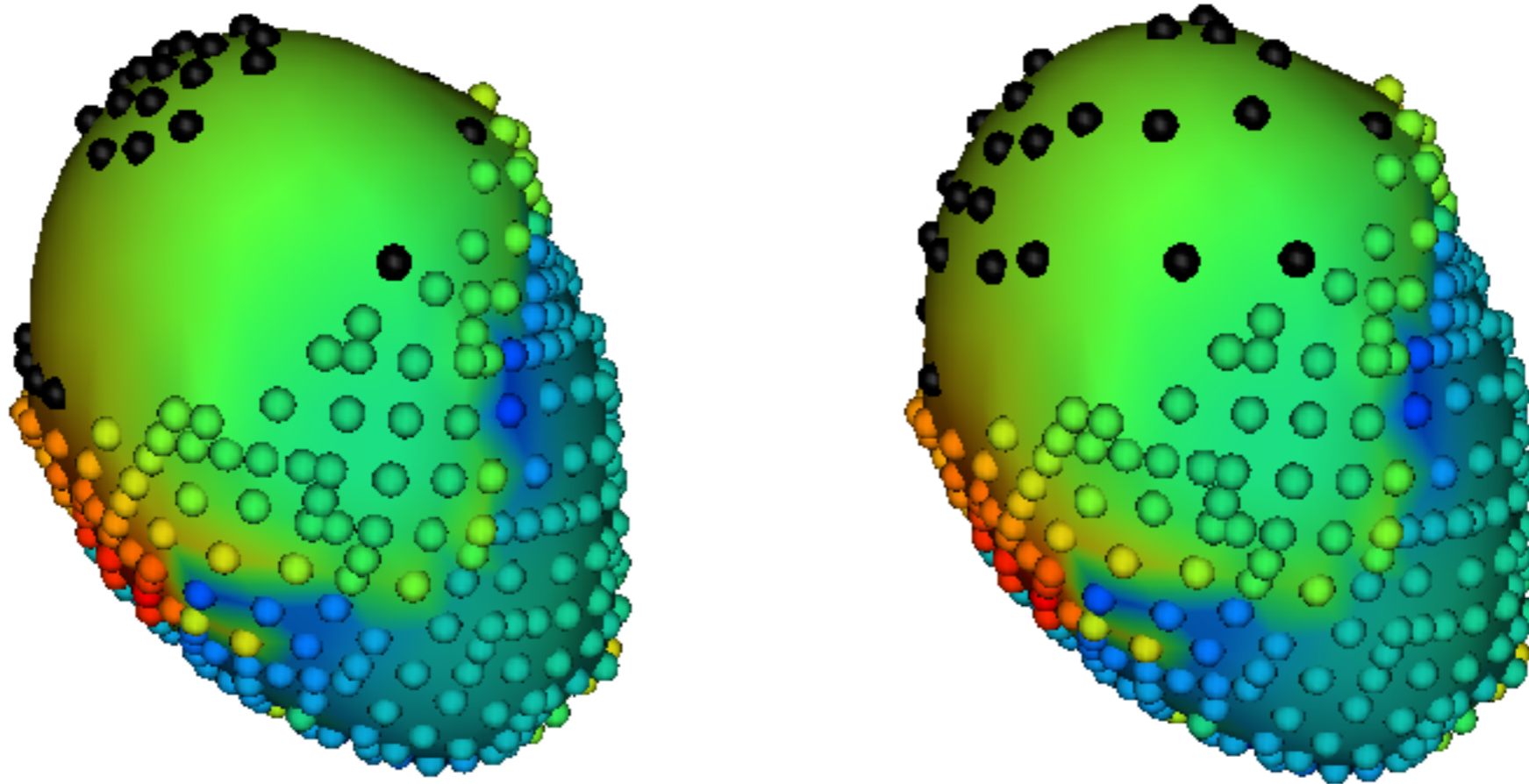


Possible Sampling

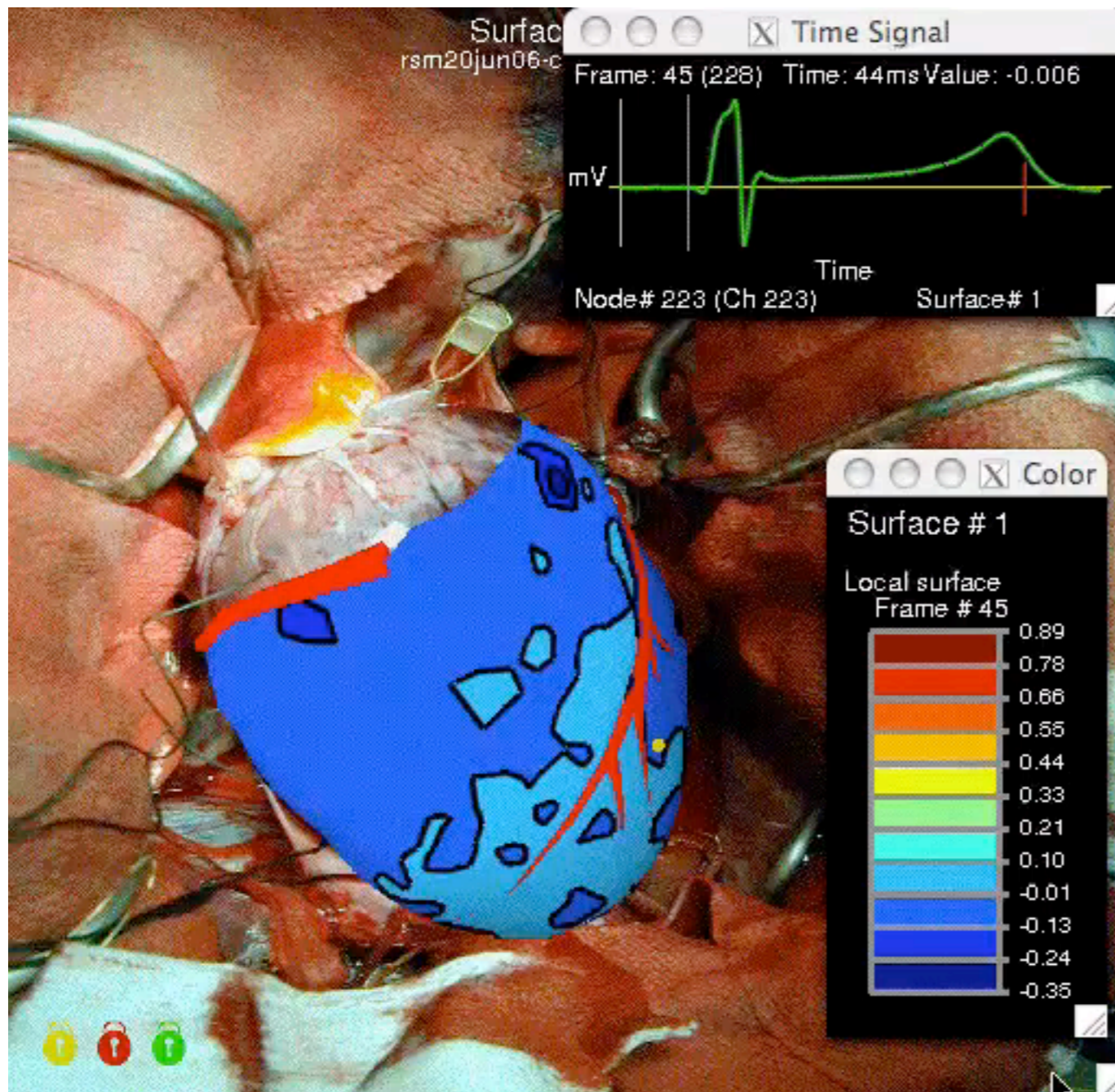
More electrodes are better
Sparse placement can reduce error

Possible Sampling

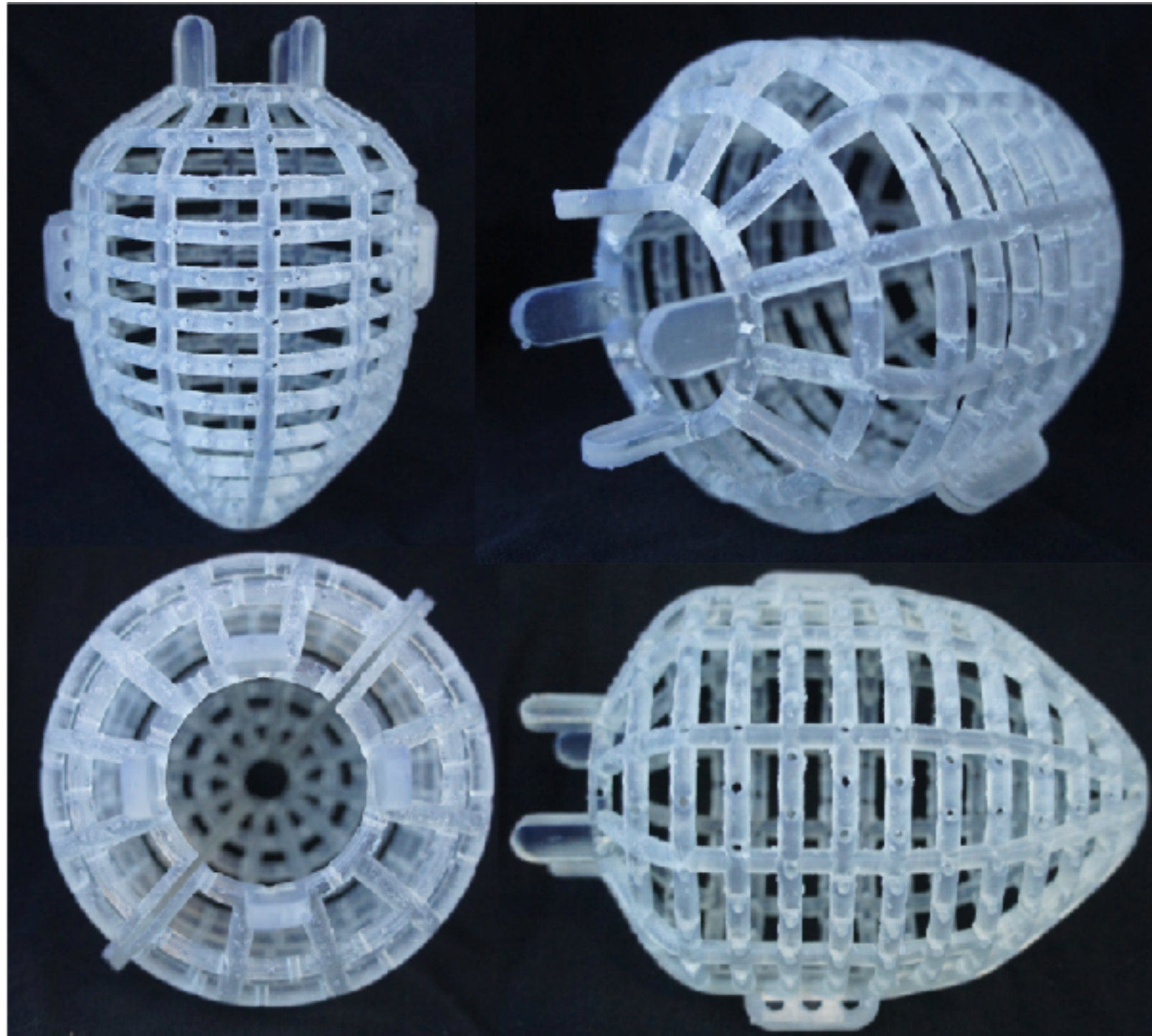
More electrodes are better
Sparse placement can reduce error



Experimental Strategy



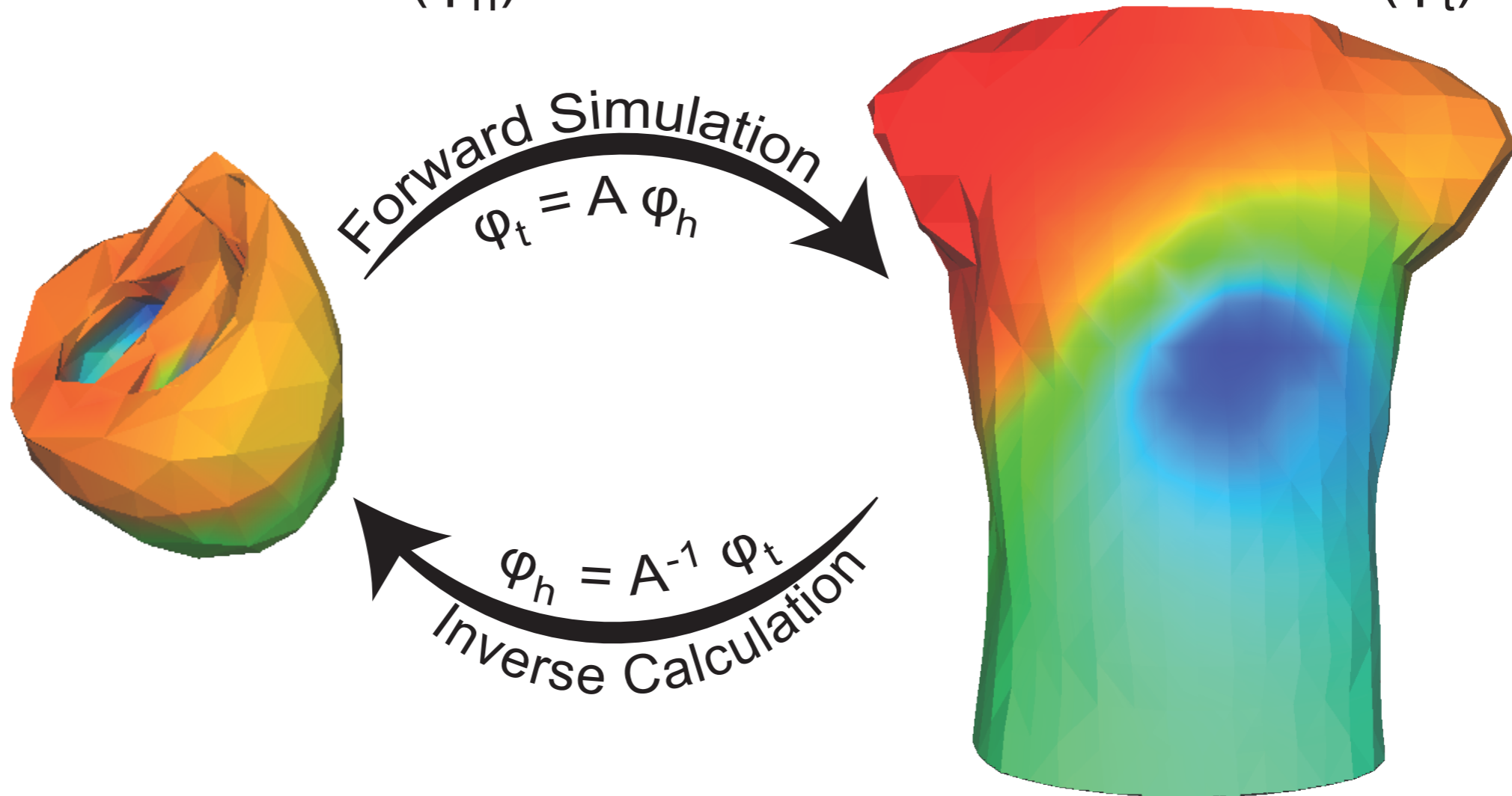
Experimental Strategy



Improve ECGI

Heart Potentials (φ_h)

Torso Potentials (φ_t)



With better source representation

Acknowledgements

People

Rob MacLeod

Karli Gillette

Brett Burton

Wilson Good

Dana Brooks

Jaume Coll-Font

Dan White

Ayla Khan

Chris Bright

Brian Zenger

Jeroen Stinstra

Support

Center for Integrative Biomedical Computing

NIGMS NIH P41 GM103545-18

Nora Eccles Treadwell Foundation

Cardiac Arrhythmia Research Package (CARP)

University Medical Centre Mannheim and the

Karlsruhe Institute of Technology (KIT)