

Automatic Segmentation of the Left Atrium from MRI Images using Salient Feature and Contour Evolution

Liangjia Zhu¹ Yi Gao² Anthony Yezzi¹ Rob MacLeod³ Joshua Cates³ and Allen Tannenbaum⁴

Abstract—We propose an automatic approach for segmenting the left atrium from MRI images. In particular, the thoracic aorta is detected and used as a salient feature to find a seed region that lies inside the left atrium. A hybrid energy that combines robust statistics and localized region intensity information is employed to evolve active contours from the seed region to capture the whole left atrium. The experimental results demonstrate the accuracy and robustness of our approach.

I. INTRODUCTION

Automatic segmentation of the left atrium in magnetic resonance imaging (MRI) is a challenge and important task in medical image analysis. For example, it can be used to analyze atrial fibrillation [1]. Challenges arise from the following facts: 1) the size of the left atrium is relatively small as compared to the left ventricle or lungs in cardiac MRI images; 2) boundaries are not clearly defined when the blood pool of the left atrium goes into the pulmonary veins; 3) the shape variability of the left atrium is large between different subjects.

To overcome those difficulties, shape models are widely used in cardiac image segmentation. In general, given a sufficient number of training images, we can either build shape models from source images using machine learning techniques or directly register all of the source images to a target image and then fuse these registration results for one consistent solution which is called multi-atlas based segmentation. One example of the first type is a principal component analysis (PCA) based method [2]. In that work, the shape space of the left atrium is defined as a linear combination of the eigen shapes learned using the PCA technique. Then, segmentation is accomplished via evolving active contours in the shape space. In [3], a probability map is generated by using a majority voting scheme over the pair-wise registration results between all of the atlases and

the target image. After that, the map is thresholded to get a binary mask for the left atrium. Finally, the mask is refined using a localized region-based active contour method [4]. Label fusion [5] and whole heart model [6] are also used in the left atrium segmentation.

However, to capture the shape variations of the left atrium, a large number of training data is required for building statistical shape models. In addition, automatic localization of those models is not trivial and much less research has been done on this topic. The purpose of this work was to develop an automatic segmentation technique without using training images or shape models for segmenting the left atrium. To achieve this goal, we define a salient feature that is robust to image variations. Then, we combine the on-line statistics inferred from the salient feature with a localized region-based active contour model to form a hybrid energy functional. Based on this formulation, the left atrium segmentation is solved by using gradient descent flows to drive active contours towards the left atrium. The overall method is fully automatic and easy to implement. Note that the salient feature detection result can be used in other model-based segmentation frameworks for initial localization.

The outline of this paper is as follows. Section 2 starts with the description of the salient feature detection and elaborates on the contour evolution method. Section 3 shows the experimental results with discussions. Finally, Section 4 concludes this paper.

II. METHOD

One salient feature that can be used to segment the left atrium is the thoracic aorta (TA). It has a circular shape in the axial view that can be detected robustly using the Hough transform technique [7]. Given the location of the TA, we can extract a seed region inside the left atrium using both region and gradient information. After that, an active contour is initialized and driven by robust statistics and a localized region-based force to explore the whole left atrium.

A. Salient Feature Detection

Assume that the left atrium lies close to the center of a cardiac MRI image. We chose the middle slice along the axial direction as the key slice I_{key} . The Hough transform [7] is performed on I_{key} to find circles in a predefined region of interest (ROI). It converts the image I_{key} to a parametric space (a, b, r) and counts the accumulated response of circles, denoted by $p(a, b, r)$, at each (a, b, r) . Here (a, b, r) is a circle of radius r centered at (a, b) . Finally, it returns a list

¹L. Zhu is with School of Electrical and Computer Engineering, Georgia Institute of Technology, Atlanta, GA 30303, USA ljjzhu at gatech.edu

²Y. Gao is with the Psychiatry Neuroimaging Laboratory, Harvard Medical School, Boston, MA 02115, USA gaoyi at bwh.harvard.edu

³A. Yezzi is with School of Electrical and Computer Engineering, Georgia Institute of Technology, Atlanta, GA 30303, USA ayezzi at ece.gatech.edu

³R. Macleod is with Scientific Computing and Imaging Institute, University of Utah, Salt Lake City, UT 84112, USA macleod at sci.utah.edu

³J. Cates is with Scientific Computing and Imaging Institute, University of Utah, Salt Lake City, UT 84112, USA cates at sci.utah.edu

⁴A. Tannenbaum is with Boston University, Boston, MA 02215, USA tannenba at bu.edu

of circles. A circular response to intensities is assigned to each circle $c(a, b, r)$ as

$$h(a, b, r) = p(a, b, r)(\mu(a, b, r) - \mu(a, b, r, R))/\sigma(a, b, r), \quad (1)$$

where $\mu(a, b, r, R)$ is the mean intensities of a ring centered at (a, b) with radiuses r and R , $\mu(a, b, r)$ and $\sigma(a, b, r)$ are the the mean and standard deviation of the intensities within $c(a, b, r)$, respectively. Here $h(a, b, r)$ favors homogeneous regions with higher intensity values inside $c(a, b, r)$ than $c(a, b, r, R)$. The region with the maximal $h(a, b, r)$ response is chosen as the TA region.

B. Contour Evolution

1) *Left Atrium Seed Region Extraction*: The seed region inside the left atrium is extracted by first finding the heart region and then searching for seed points that belong to the left atrium.

To segment the heart region, the Otsu's method [8] is applied to I_{key} to convert it into a binary image. The largest connected component is chosen as the initial segmentation of the heart. The TA region is excluded from the segmented heart region if they have overlaps. Then, the coarse segmentation is refined using a localized region-based active contour method [4], [9] to minimize an energy functional

$$E_{\text{LG}}(C) = E_{\text{in}}(C) + E_{\text{out}}(C), \quad (2)$$

where

$$E_{\text{in}}(C(s)) = \int_{C(s)} \int_{x \in R} (I\chi(x, s) - u_l(s))^2 dA ds \quad (3)$$

$$E_{\text{out}}(C(s)) = \int_{C(s)} \int_{x \in R^c} (I\chi(x, s) - v_l(s))^2 dA ds \quad (4)$$

where $C(s)$ denotes a closed curve parameterized by its arclength s , R represents the region inside $C(s)$, R^c is the region outside $C(s)$, and dA is the area element. $\chi(x, s)$ is a characteristic function that has value 1 if x is inside a ball $B(C(s))$ centered at $C(s)$ and 0 otherwise. $u_l(s)$ and $v_l(s)$ are the means of intensities in local neighborhoods around $C(s)$. The area integral defines a Chan-Vese energy [10] that tries to separate the intensity means between the regions divide by $C(s)$ inside $B(C(s))$. The line integral is the typical geodesic active contour energy [11].

By computing the first variation of $E_{\text{LG}}(C)$ with respect to $C(s)$, we get the gradient descent flow of $C(s)$ [9] as

$$\begin{aligned} \frac{\partial C(s)}{\partial t} = & \left(\int_R (I\chi(x, s) - u_l(s))^2 dA \right. \\ & + \int_{R^c} (I\chi(x, s) - v_l(s))^2 dA \Big) \kappa N \\ & - \oint_{C(r)} \left((I\chi(C(s), r) - u_l(r))^2 \right. \\ & \left. + (I\chi(C(s), r) - v_l(r))^2 \right) dr N, \end{aligned} \quad (5)$$

in which N is the inward unit normal vector field on $C(s)$ and κ is the curvature of the contour. This step captures the bright region of the heart which contains the left atrium.

To narrow down the search space, the gradient information of I_{key} is used to extract the seed region inside the left atrium. To this end, we set the detected heart region as our ROI and compute the magnitude of gradient, I_g , for I_{key} . Then, I_g is converted into a binary image using a threshold $\text{mean}(I_g)$. A distance transform [12] is performed on this binary image. On the distance field image I_{dist} , we search for a circular region that has the maximal response to the following measurement as the seed region inside the left atrium,

$$S_{\text{LA}} = \frac{\int \int_{B(x, r_l)} I_{\text{dist}}(x) dA}{\text{dist}(x, \text{TA})} \quad (6)$$

where $B(x, r_l)$ is a ball of radius r_l centered at x and $\text{dist}(x, \text{TA})$ is the distance from x to the center of TA.

2) *Hybrid Evolution Flow*: Note that the energy E_{in} or E_{out} is a region-based energy that tends to drive active contours to where regions can be locally divided into two distinct areas. However, the driven force is fairly small if the neighborhood around a contour point is almost homogeneous like near the seed region. To solve this problem, we propose a new energy that adds a region growing term to E_{LG} . The new functional needs to be minimized is

$$E_H(C) = \alpha(E_{\text{in}}(C) + E_{\text{out}}(C)) + \beta E_{\text{RS}}(C) + \gamma \int_C ds, \quad (7)$$

where the last term controls the smoothness of $C(s)$, α , β , and γ adjust the contribution of each term. E_{RS} is a region growing energy [13] that utilizes the robust statistics of the seed region. To compute the robust statistics, a feature vector is defined for each pixel x in an image as

$$\mathbf{f}(x) = (\text{MED}(x), \text{IQR}(x), \text{MAD}(x))^T \in \mathbb{R}^3, \quad (8)$$

where $\text{MED}(x)$, $\text{IQR}(x)$, and $\text{MAD}(x)$ are the intensity median, inter-quartile range, and median absolute deviation around a neighborhood of x , respectively. Then, the seed region is characterized by the probability density function of the feature vectors as

$$p(\mathbf{f}) = \frac{1}{|G|} \sum_{x \in G} K_\eta(\mathbf{f} - \mathbf{f}(x)), \quad (9)$$

where K is the kernel function. We use Gaussian kernel in this work. The robust statistics energy is defined as

$$E_{\text{RS}}(C) = \iint_R -p(\mathbf{f}(x)) dx, \quad (10)$$

where R is the region inside contour C . The gradient descent flow of C is

$$\frac{\partial C(s)}{\partial t} = -p(\mathbf{f}(C(s)))N. \quad (11)$$

Here N is the inward unit normal vector field on $C(s)$ (see [13] for details).

The gradient descent flow of $E_H(C)$ is just a combination of the flows in equations (5) and (11). Note that we have shown a hybrid evolution flow in 2D. However, the generalization to 3D is straightforward.

III. EXPERIMENTS AND RESULTS

We evaluated the proposed segmentation method using 12 cardiac MRI images that have large variations among the left atrium.

To detect the salient feature, the image I_{key} was divided into four regions and the bottom right one was chosen as our ROI. The Hough transform only looks for circles with radius $10 < r < 16mm$. In all of the test, we set $r_l = 0.6r$ in searching for the seed region. Figure 1 illustrates the process of detecting the seed region. Note that, although boundaries are not clearly defined at where the left atrium connects to other chambers, partial boundaries still exist that separates the left atrium from other heart regions. Specifically, as shown in Figure 1(c), three isolated distance clusters are formed and one of which is contained in the left atrium. Thus, the seed region was successfully identified using the measurement defined in equation 6. Our method was succeeded in detecting seed regions for all of the 12 MRI images. Figure 2 shows four representative detection results where the shapes of the left atrium are significantly different as being viewed from their key slices I_{key} .

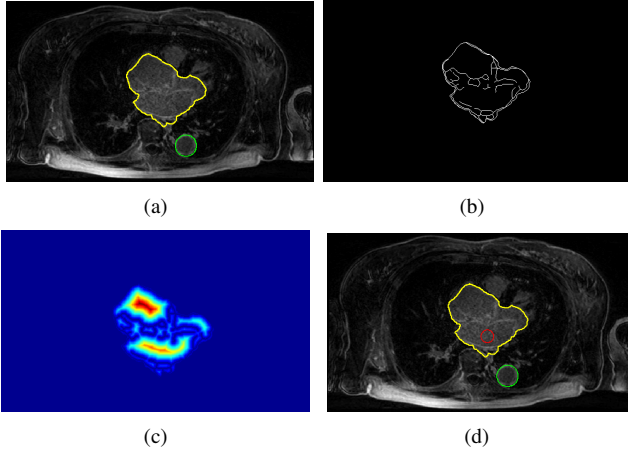


Fig. 1. Seed region detection process. (a). TA (green circle) and heart region (yellow contour). (b) Edges within the heart region. (c) Distance field. (d) Seed region (red circle)

In the contour evolution stage, the sparse field level set method [14] was used for its efficiency. Also, all of the data were downsampled to $2 \times 2 \times 2mm^3$ voxel size before starting active contour evolution. We set $\alpha = 0.5$, $\beta = 0.5$, and $\gamma = 0.3$ in all experiments. The contour evolution starts from the seed region and stops when the volume change rate, $\frac{|v_i - v_{i-1}|}{v_{i-1}}$, between two iterations $i - 1$ and i is less than a threshold T_v , which is 0.01 in our test. Figure 3 shows an example of the segmentation in the axial view using E_{RS} only or the hybrid energy E_H . It demonstrates that the robust statistics force pushes the contour from the seed region outwards but provides less stopping force than the hybrid force when the contour is approaching boundaries. Therefore, evolution leakage happens in Figure 3(a). A 3D view of this segmentation result is given in Figure 4.

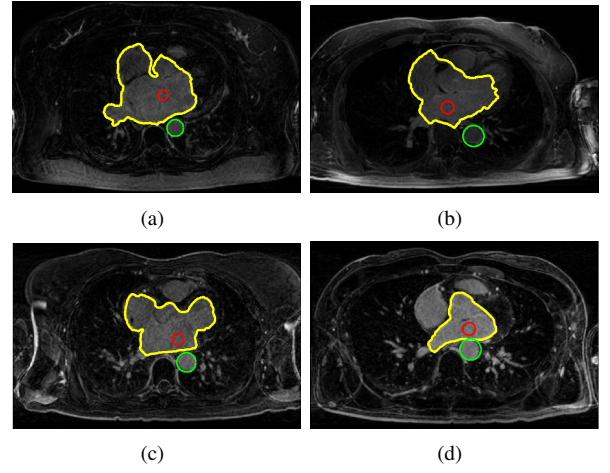


Fig. 2. Seed region detection results for different MRI images. The TA is marked with green circle and the seed region with red circle. The yellow contour encloses the heart region.

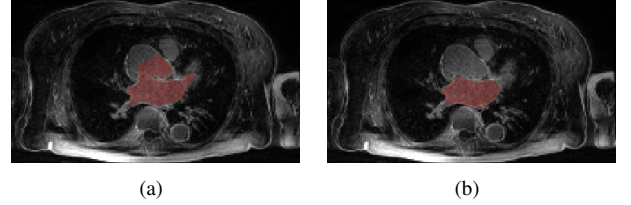


Fig. 3. Comparison of segmentation with energy (a) E_{RS} and (b) E_H .

To quantify errors, we measure the overlap between automatic segmentations V_a and the ground truth V_m using the standard Dice coefficient [15]

$$D(V_a, V_m) = 2 \frac{\|V_a \cap V_m\|}{\|V_a\| + \|V_m\|}. \quad (12)$$

The mean and standard deviation are 0.82 ± 0.06 . The most of mismatches are around the pulmonary veins where high-level priors are needed for better segmentations.

IV. CONCLUSIONS

We have outlined an automatic segmentation method for extracting the left atrium using salient feature and contour evolution techniques. This method is based on a salient feature for localizing the left atrium. Thus, it is robust to shape variations and image quality. The contour evolution step starts from a seed region inferred via the salient feature and is able to explore the image to find the whole left atrium. The experimental results show the accuracy and robustness of our approach. We will test our algorithm with more MRI images and investigate the application of our approach to the atrial fibrillation analysis in the future.

ACKNOWLEDGEMENTS

This work was supported in part by grants from AFOSR, ARO, ONR, and MDA. This work is part of the National Alliance for Medical Image Computing (NA-MIC), funded by the National Institutes of Health through the NIH Roadmap for Medical Research, Grant U54 EB005149. Information

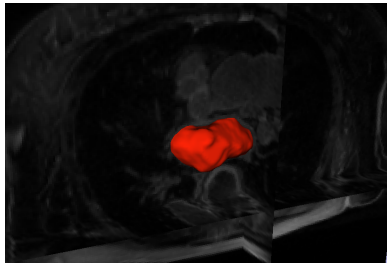


Fig. 4. 3D view of the segmented left atrium.

on the National Centers for Biomedical Computing can be obtained from <http://nihroadmap.nih.gov/bioinformatics>. Finally, this project was supported by grants from the National Center for Research Resources (P41-RR-013218) and the National Institute of Biomedical Imaging and Bioengineering (P41-EB-015902) of the National Institutes of Health.

REFERENCES

- [1] C. J. McGann, E. G. Kholmovski, R. S. Oakes, J. J. Blauer, M. Daccarett, N. M. Segerson, K. J. Airey, N. Akoum, E. N. Fish, T. J. Badger, E. V. R. DiBella, D. Parker, R. S. MacLeod, and N. F. Marrouche. New magnetic resonance imaging based method to define extent of left atrial wall injury after the ablation of atrial fibrillation. *J. Am. Coll. Cardiol.*, 2008.
- [2] Y. Gao, B. Gholami, R.S. MacLeod, J. Blauer, W.M. Haddad, and A. Tannenbaum. Segmentation of the endocardial wall of the left atrium using local region-based active contours and statistical shape learning. In *Proceedings of SPIE Medical Imaging*, 2010.
- [3] Y. Gao and A. Tannenbaum. Combining atlas and active contour for automatic 3d medical image segmentation. In *ISBI*, pages 1401–1404, 2011.
- [4] S. Lankton and A. Tannenbaum. Localizing region-based active contours. *IEEE Trans. Imag. Proces.*, 17:2029–2039, 2008.
- [5] M. Depa, M.R. Sabuncu, G. Holmvang, R. Nezafat, E.J. Schmidt, and P. Golland. Robust atlas-based segmentation of highly variable anatomy: Left atrium segmentation. In *In Proc. of MICCAI Workshop on Statistical Atlases and Computational Models of the Heart: Mapping Structure and Function*, volume 6364 of *LNCIS*, pages 85–94, 2010.
- [6] Y. Zheng, A. Barbu, B. Georgescu, M. Scheuering, and D. Comaniciu. Fourchamber heart modeling and automatic segmentation for 3-d cardiac ct volumes using marginal space learning and steerable features. *IEEE Transactions on Medical Imaging*, 27(11):1668–1681, 2008.
- [7] D. H. Ballard. Generalizing the hough transform to detect arbitrary shapes. *Pattern Recognition*, 13(2):111–122, 1981.
- [8] N. Otsu. A threshold selection method from gray-level histograms. *IEEE Trans. Sys., Man., Cyber*, 9(1):62–66, 1979.
- [9] S. Lankton, D. Nain, A. Yezzi, and A. Tannenbaum. Hybrid geodesic region-based curve evolutions for image segmentation. In *Proc SPIE: Med Imag*, 2007.
- [10] T. Chan and L. Vese. Active contours without edges. *IEEE Trans. Imag. Proces.*, 10(2):266–277, 2001.
- [11] V. Caselles, R. Kimmel, and G. Sapiro. Geodesic active contours. *Int. J. Comput. Vis.*, 22(1):61–79, 1997.
- [12] M. Calvin, R. Qi, and V. Raghavan. A linear time algorithm for computing exact euclidean distance transforms of binary images in arbitrary dimensions. *IEEE Transactions on Pattern Analysis and Machine Intelligence*, 25(2):265–270, 2003.
- [13] Y. Gao, A. Tannenbaum, and R. Kikinis. Simultaneous multi-object segmentation using local robust statistics and contour interaction. In *MICCAI Workshop on Medical Computer Vision*, 2010.
- [14] R. T. Whitaker. A level-set approach to 3d reconstruction from range data. *Int. J. Comput. Vis.*, 29(3):203–231, 1998.
- [15] W. Frakes and R. Baeza-Yates, editors. *Information Retrieval: Data Structures & Algorithms*. Prentice-Hall, 1992.