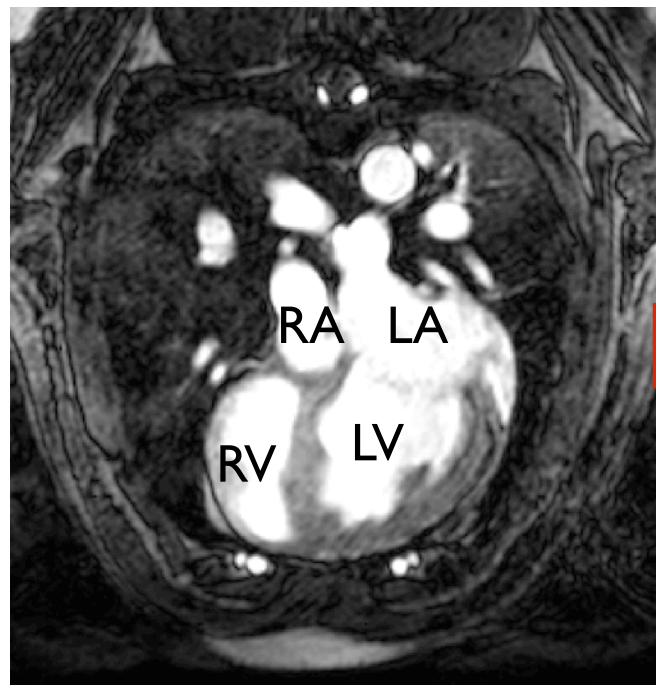




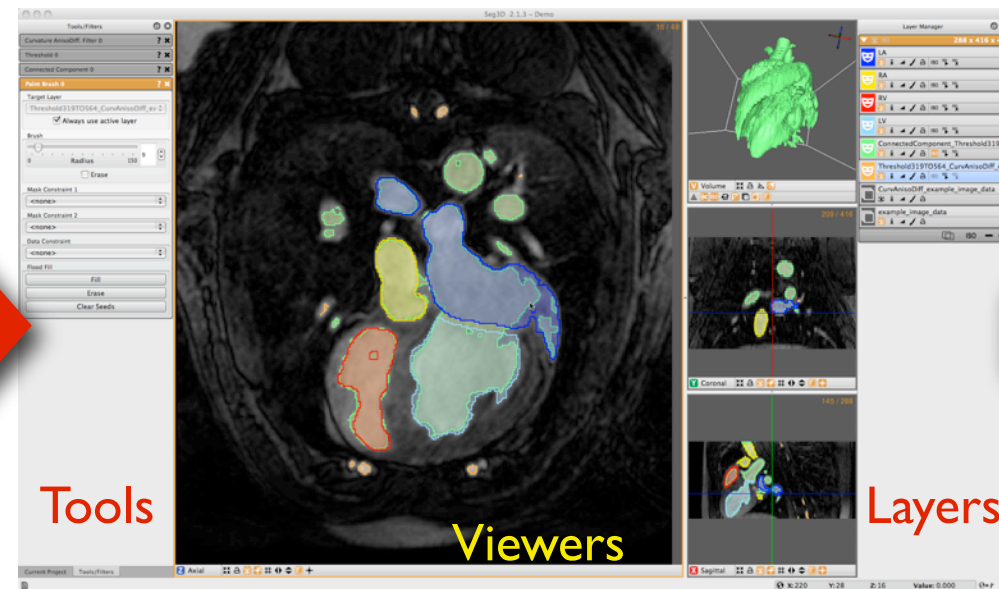
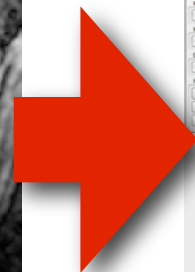
Image Segmentation

using Seg3D

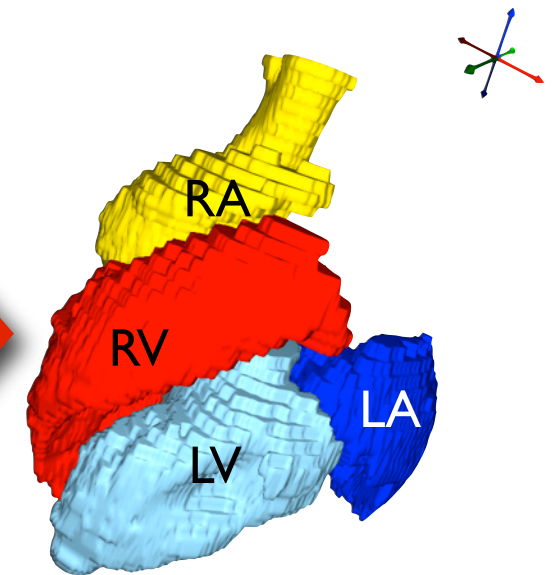
Segmentation From Clinical Scans



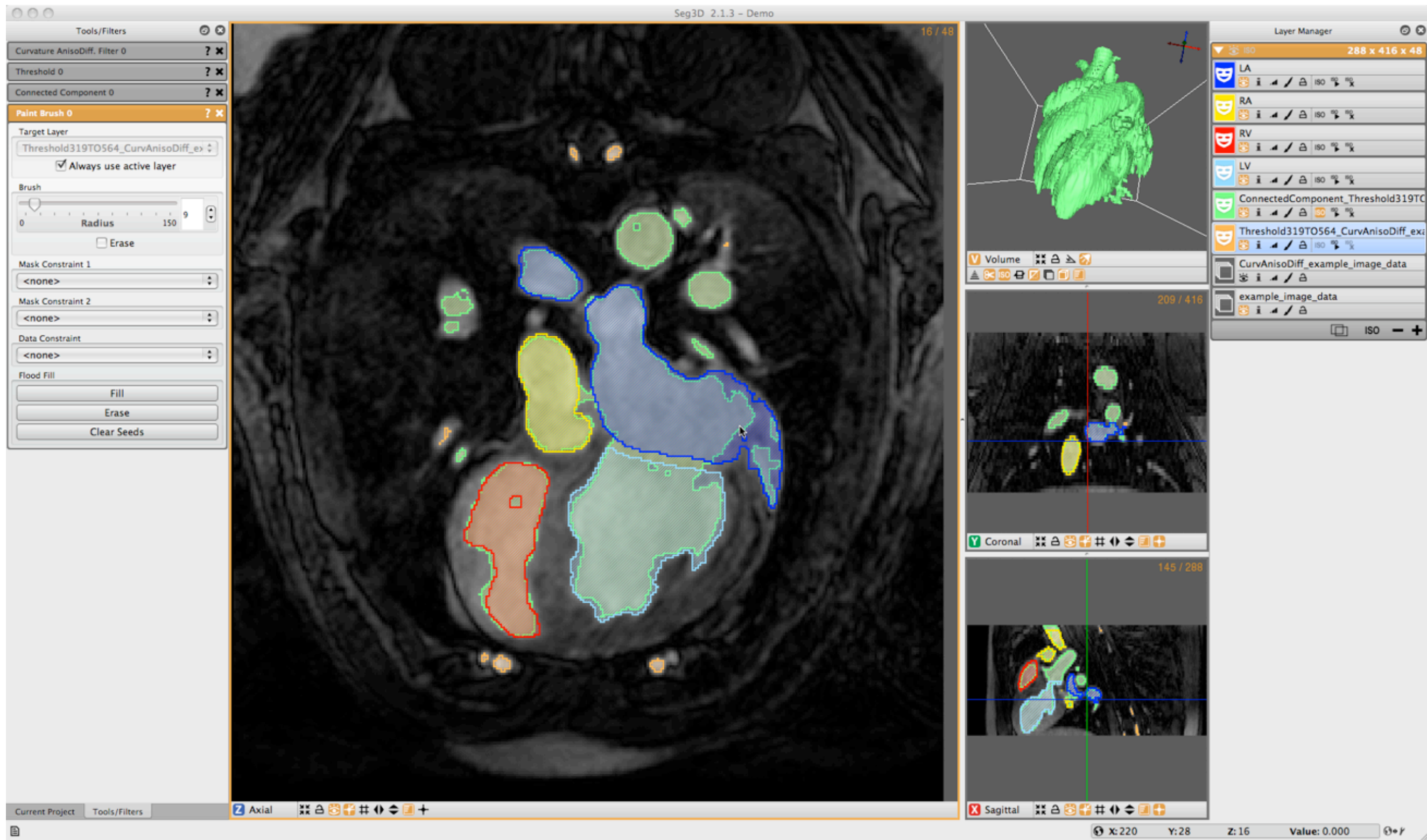
Original Scan



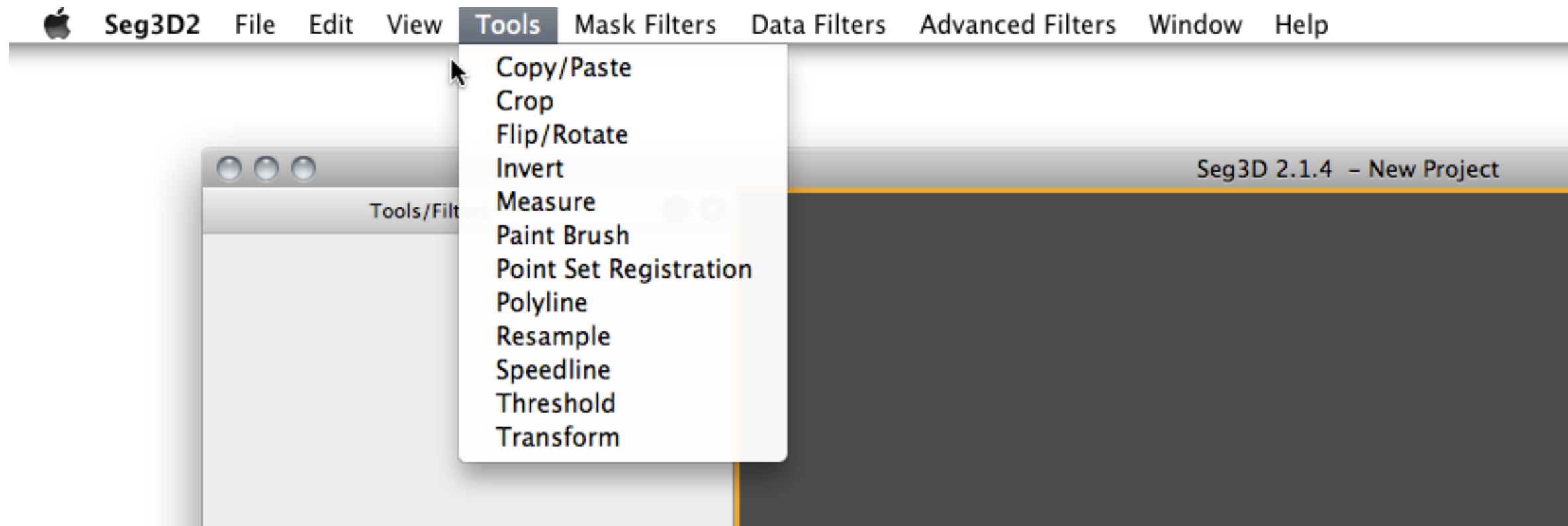
Segmenting
using Seg3D



Final
Segmentation

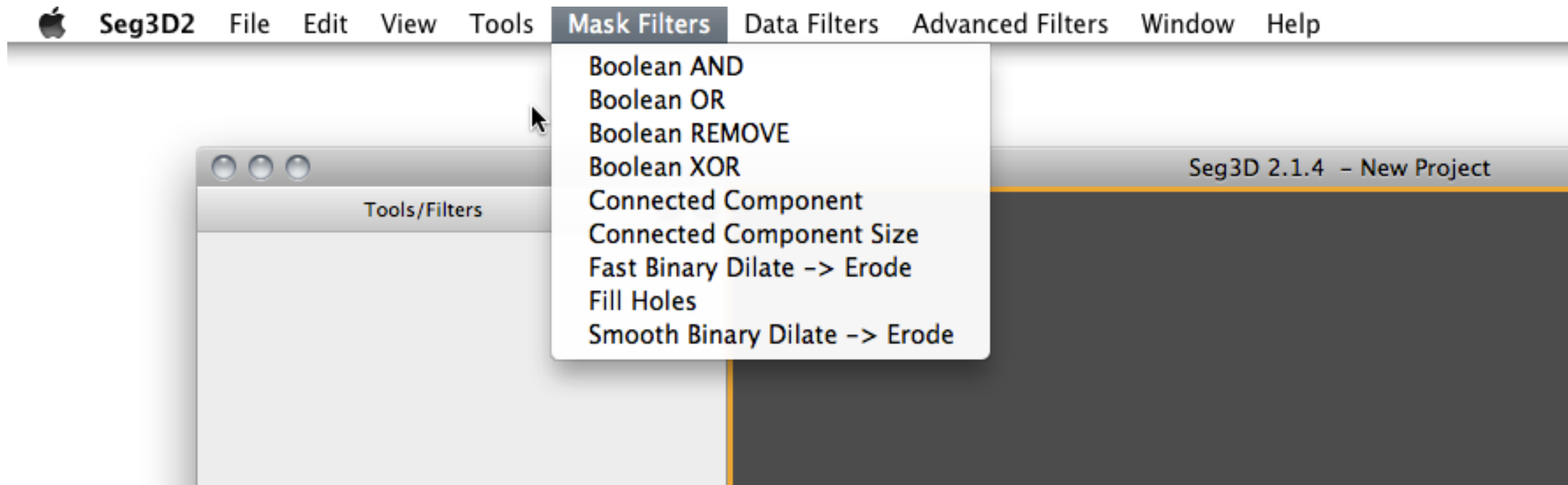


Tools Menu



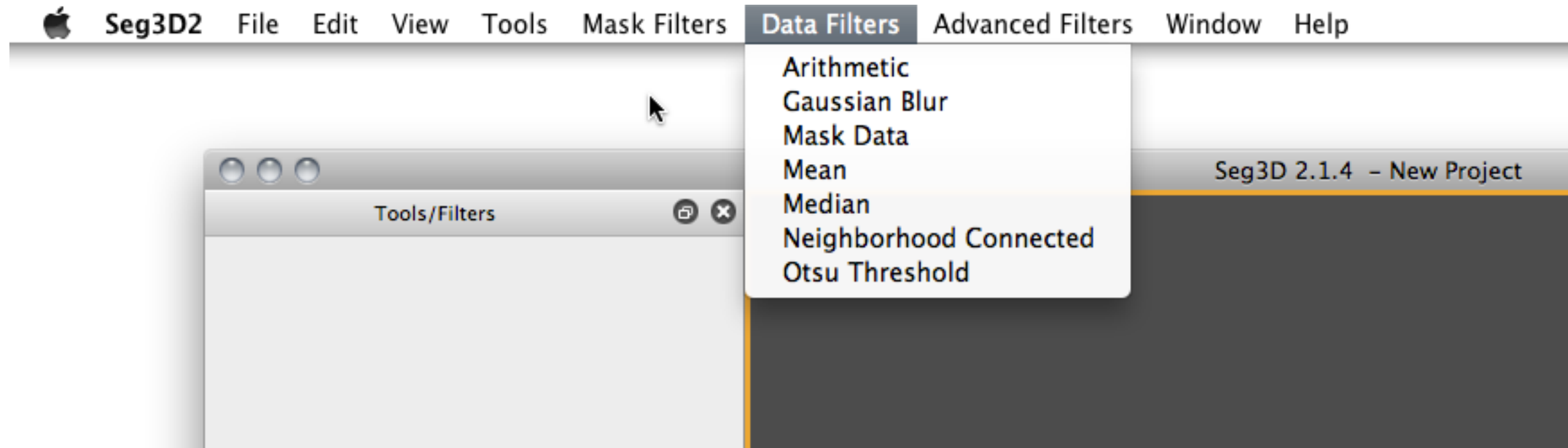
- Interactive tools for operating on volume

Mask Filters Menu



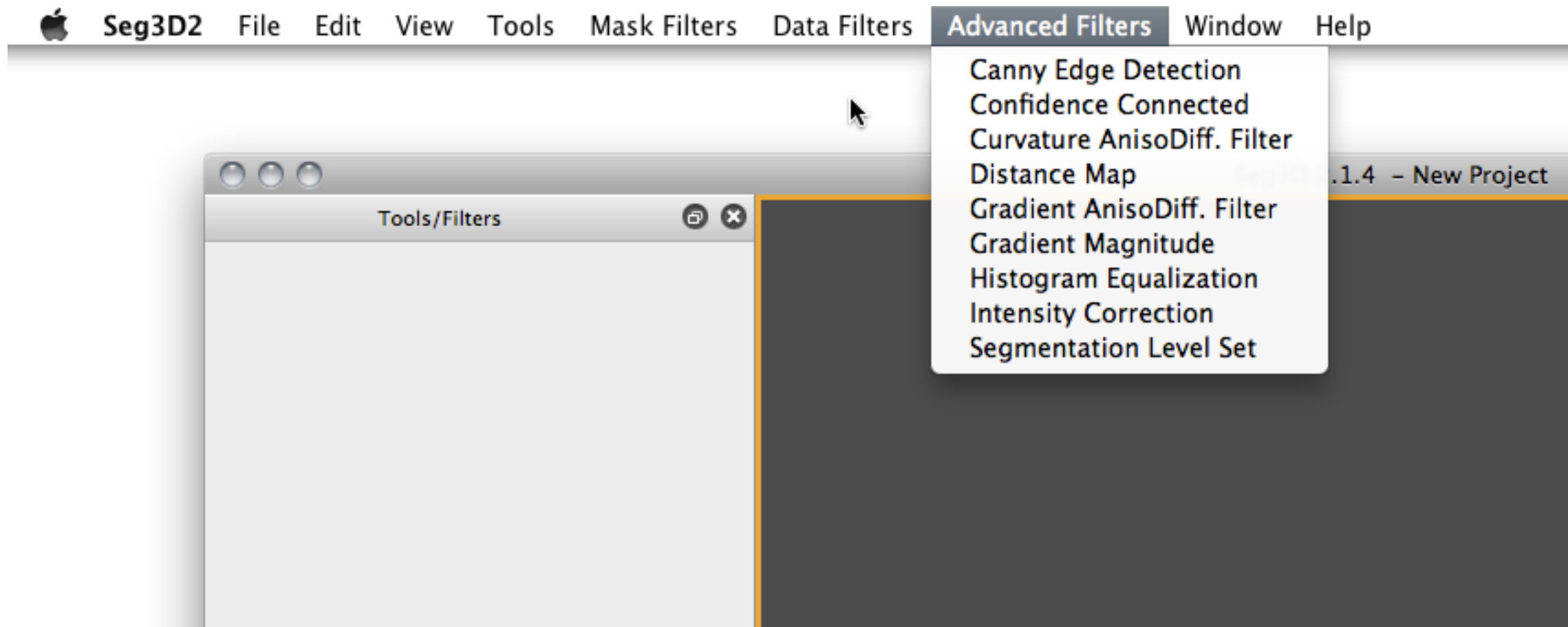
- Operations on label masks

Data Filters Menu



- Simple operations on layers (data or mask)

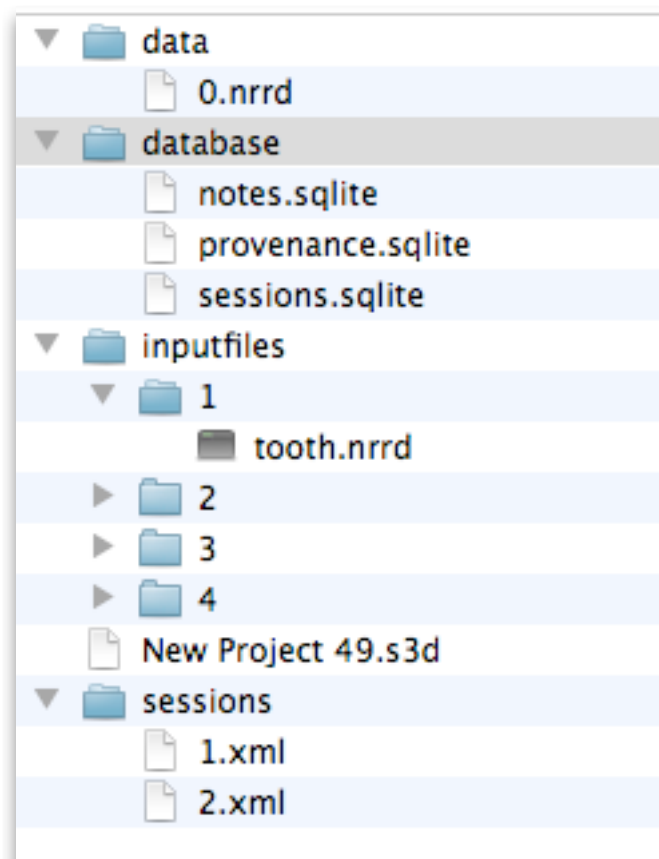
Advanced Filters Menu



- Filters implementing complex algorithms

Architecture of Seg3D: Project Folders

Example of a project directory



Data files used in the sessions. Each volume is only stored once and masks are grouped together into one nrrd file

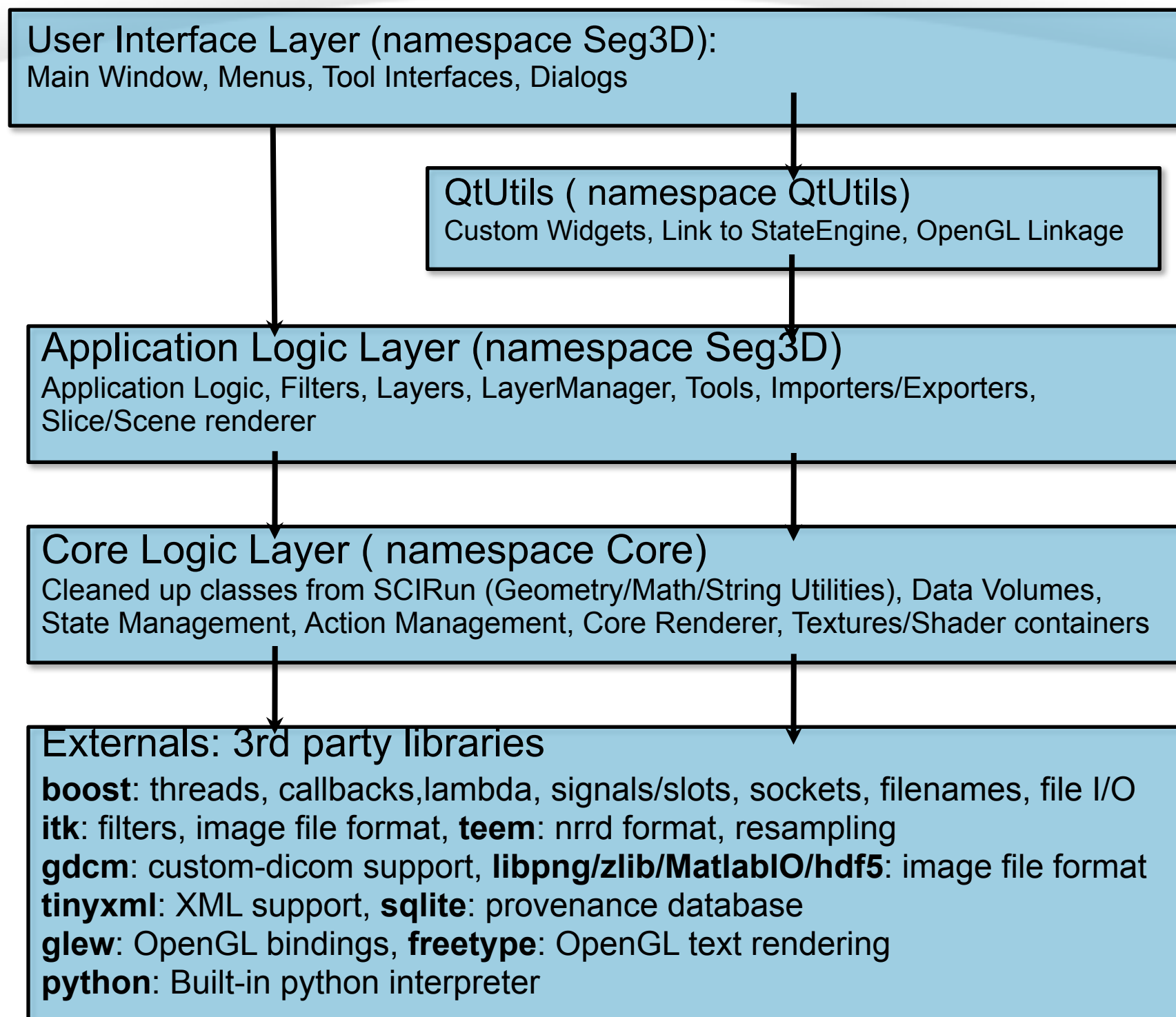
Database files

Provenance requires play back hence a copy is made of all the files that are imported, so all information is stored (GLP)

Main project file (XML format)

Each session is listed as its own file

Architecture of Seg3D: Layered Approach



Lower layers do not depend on code in layers above:

Hence you could build a headless Seg3D version by taking the top layer off.

Architecture of Seg3D: Directory Structure

