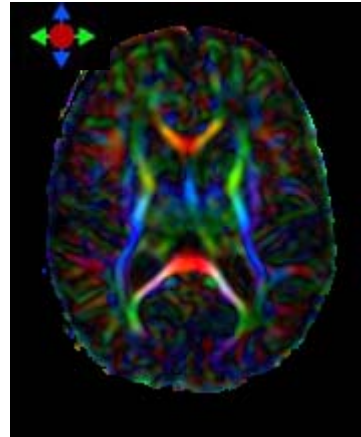


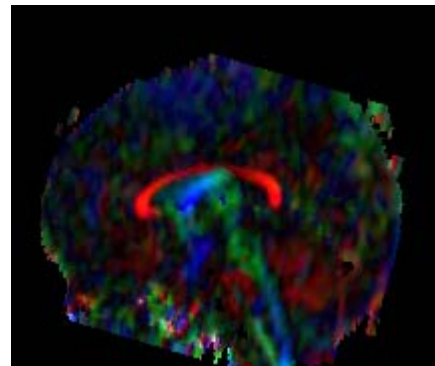
Pediatric Development Study

Data set :
Diffusion tensor images (DTI)
Total 45 subjects -
Children from zero month
To 18 years old at every year

Zero month

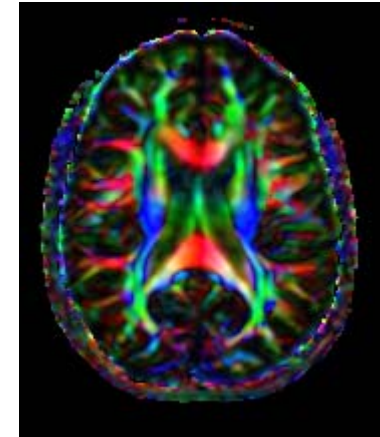


Axial view

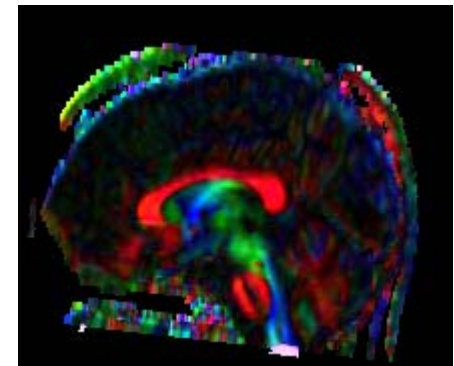


Sagittal view

10 years old



Axial view

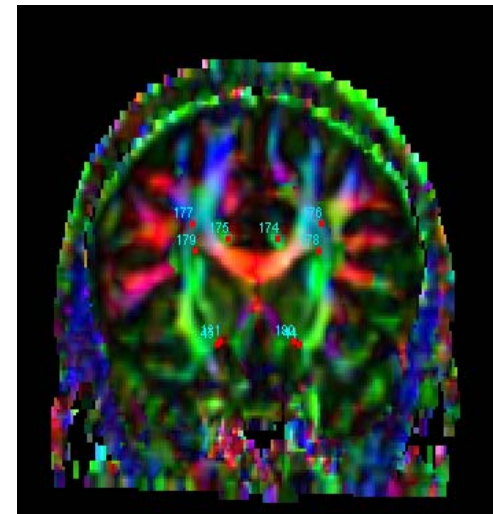
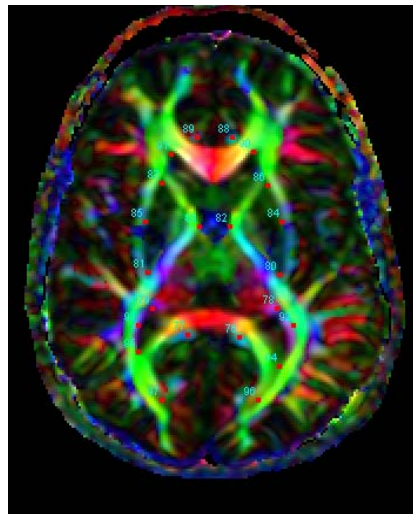
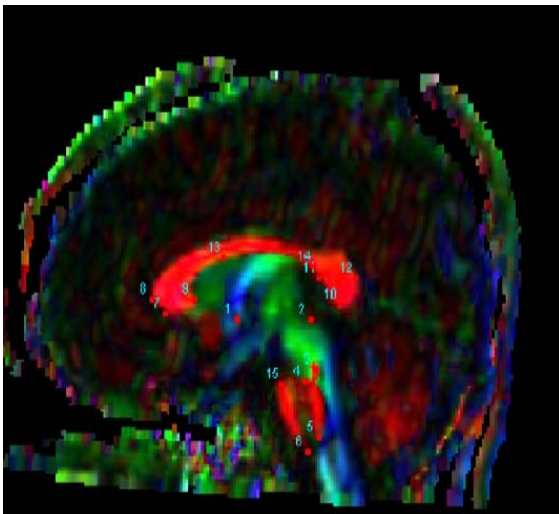


Sagittal view

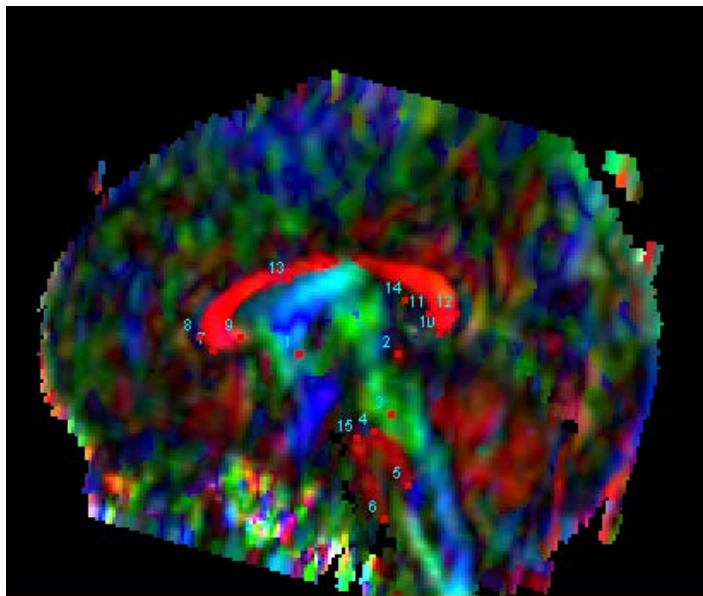
Landmark placement

- Total 237 landmarks are placed on sagittal, axial, and coronal planes.

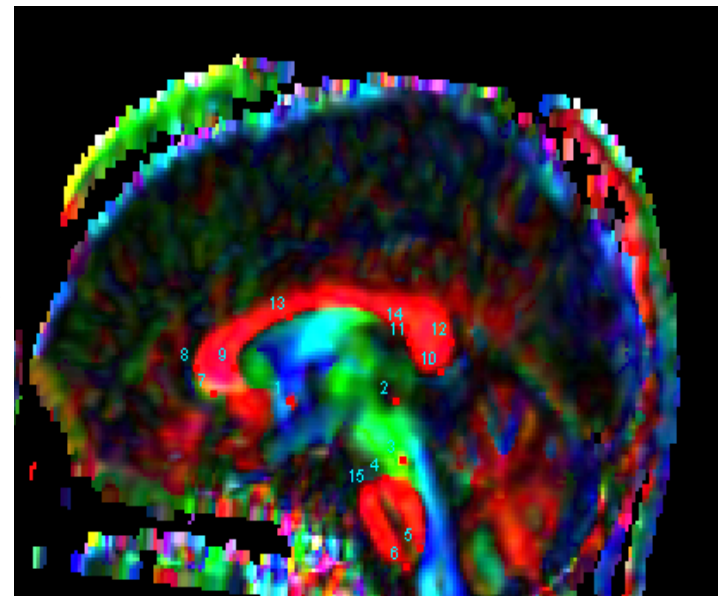
Examples

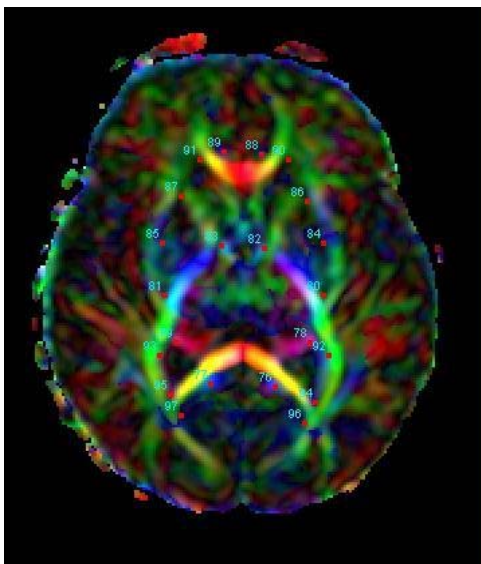


Landmark matching – landmark based Large Dimensional Diffeomorphic Matching(LDDMM)

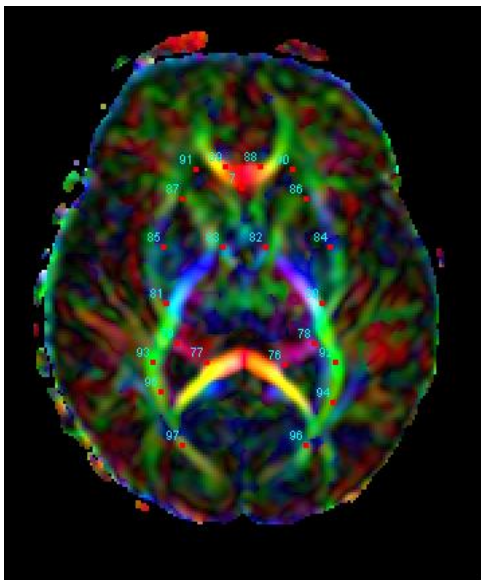


LDDMM

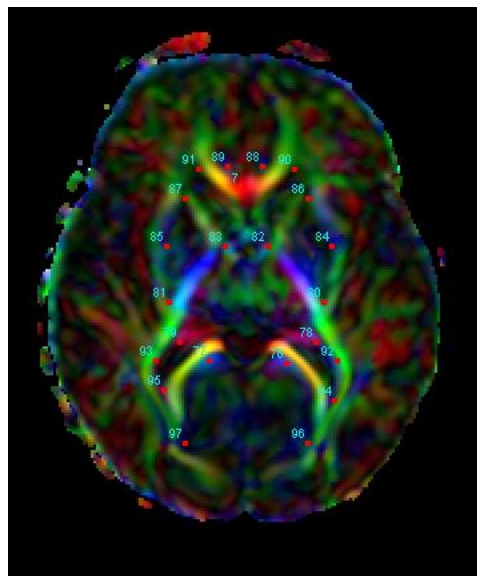




Subject- at birth

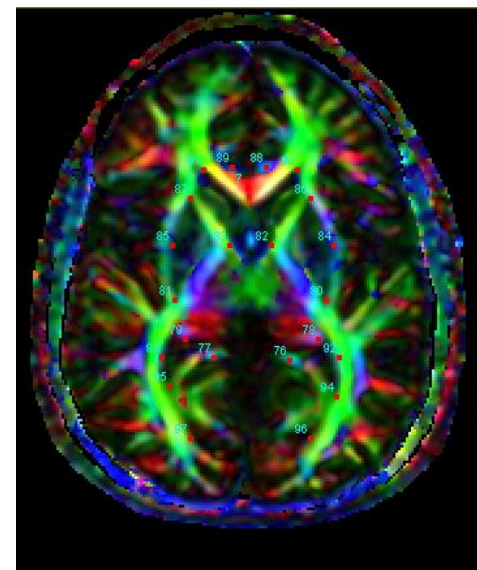


Subject – at birth
(with template landmarks, ie-#76, 77 are misplaced)



Deformed subject
With template Imks

○



Template – 18 yrs

Growth movie

